

NOVEMBER, 1951



Vol. II No. 2

PRICE 6<sup>d</sup>.

**TABLE  
TENNIS  
DIGEST**

*Official Magazine*

OF THE

**LIVERPOOL & DISTRICT TABLE TENNIS LEAGUE**

# Table Tennis

All correspondence must be addressed to The Editor "Table Tennis Digest," 9 Podium Rd. L'pool 13

## Digest

Published on the third Thursday of each month from October to March. Subscription for season 3s 9d. post free.

EDITORIAL BOARD:

Joint Editors: J. D. Pattison and J. D. Loughrey

D. M. Foulis

W. Stamp

A. Montgomery

---

### COMMENT

IN recent months we have heard on more than one occasion unfavourable comment passed on the relative lack of success gained by our younger men players in top class table tennis. There certainly seems to be something to be said for this view when we consider the results in the last Liverpool Closed. On another page you will find what some well-known personalities think about this problem, which is undoubtedly the reason for the failure of the League to achieve any major successes in either the Wilmott Cup or the Lancashire and Cheshire League in recent years.

Why there should be so much difficulty in finding the youthful prospects is a question difficult to answer. Certainly National Service may be a partial reason, but in our opinion a determined effort should be made to discover the embryo Ken Hydes which must exist if only they could be discovered.

We feel that both the Regional secretaries and our divisional correspondents could do much to help in this respect. In their visits to matches they could spot likely talent, and report accordingly to the Selection Committee. We fully realise that this is in fact being done in some cases, but in our opinion it should be done on a fully organised and official basis.

To end on a note of encouragement we must report that we have heard from more than one source of a youthful prospect who by his performances is showing considerable signs of achieving more than average success.

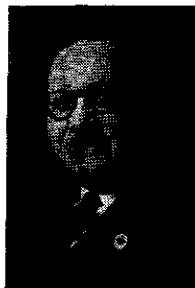
Despite the clearer definition of the Service Rule which appeared in last month's *Digest* we hear that there has already occurred more than the odd unfortunate incident with regard to its interpretation. It seems most unfortunate that on such a basic point of the game there should be so much controversy, and we would appreciate the views of some of our readers.

We would also like to point out that a certain number of players are habitually serving outside the side line without suffering the penalty of losing the point. Umpires should realise that this is a foul service and act accordingly.

*From the Secretary's Desk.*

# LET'S ALL HAVE A DAY OUT AT WEMBLEY FINALS

By W. STAMP.



THE National County Championships, inaugurated in 1947, now have a membership of 29 counties and on FRIDAY, DECEMBER 14, we are staging on behalf of the Lancashire Association, a premier division match—LANCASHIRE v. WARWICKSHIRE—in the Lecture Theatre at Liverpool Y.M.C.A., Mount Pleasant, at 7-30 p.m.

The Red Rose team will include Benny Casofsky and Ken Stanley, and as Warwick can call upon such stalwarts as Maurice Kriss, Wally Poole and the McKays, a keen and interesting match should be the result.

We want a full house, and the admission charges of 2/- and 1/- are within the reach of everybody. Tickets may be obtained through your Secretary who has been sent a card on which to state the club requirements, or you can apply direct to me at 3 Farndale Close.

The greatest events in the table tennis calendar are the finals of the English Championships staged at the Empire Pool, Wembley, on SATURDAY, MARCH 29, 1952.

At least 300.

We had a special train from Liverpool in 1936 and I feel sure there are many members and their friends who would support such another project. The E.T.T.A. offer terms to leagues, 8/6 tickets for 5/6, but early application is essential.

I have made inquiries and subject to a minimum of 300, arrangements can be made for a special train to depart from Lime Street at approximately 9-0 a.m., calling at Runcorn and Crewe (should there be members from surrounding Leagues willing to join our party). A stop will be made at Wembley (about 1 p.m.) should anyone wish to attend the afternoon session at Wembley, otherwise we proceed to

Euston and a few hours can be spent sightseeing London before travelling out to the finals in the evening. There are frequent tube trains to Wembley Central.

A packed lunch and cups of tea will be provided on the outward journey. The train will leave Euston at approximately 1 a.m., again stopping at Crewe and Runcorn. There will be no packed meal on the return journey as members will have ample time to get something at one of the Corner Houses at the conclusion of the finals.

The inclusive cost will be £2 11s. 0d. Members or friends desiring to spend all their time in London and not wishing to attend the finals can do so at a cost of £2 5s. 6d.

I can quite understand some of you (particularly the younger players) saying, "What does he think we are going to use for money?" A fair question.

### Weekly subscriptions.

I am prepared to issue subscription cards to club secretaries and/or treasurers from December 8 to March 22 there are 16 weeks, so that with 6/- deposit the first week, and 3/- each subsequent week the amount will be realised without you missing it. Should you decide to make it 4/- or 5/- per week and ensure having something extra to spend—so much the better.

I am aware that March 29 seems a long way off, but the necessary reservations will have to be made almost immediately, so I suggest you talk it over with your own club members and then consult your secretary so that he can complete the reservation form I have sent to him.

To those of you who have not been to Wembley—*DO NOT MISS* this grand opportunity.

# Discipline Those Absentees

By CALCHAS

IN the editorial comment of the October issue of the *Digest* appeared two most disturbing figures regarding last season's matches, namely, the non-fulfilment of no fewer than 61 matches and the non-appearance of players on 110 occasions.

One wonders how long this sort of thing has been going on. Has it been a gradual process through the post-war years or was last season the first of its kind?

Even taking into account the influenza epidemic there still seems little justification for these figures, and the question arises did the Management Committee know what was going on, and if so, why did they allow it to reach such proportions?

## Little done

In the light of these figures there certainly seems to be a case for taking disciplinary measures but little seems to have been done.

If only a fine of 2/6d. had been imposed in each case this would have amounted to approximately £22 during

the season, and I have no recollection of any such amount appearing on the balance sheet and what did appear would include 5/- fines for non-attendances at the General Meeting.

If it was a case of the same offenders continually breaking the rules then the above fine would have been an insufficient penalty, but there has been no sign of anything more drastic having been done.

It may be that certain clubs having found in the past they could get away with this sort of thing without much happening, have been encouraged to continue and the offences have multiplied.

If this is so one can sympathise with the new fixture secretary in his task and can fully understand and applaud him for the strong line he is now taking. Let the clubs do their part and not only make his job easier but less unpleasant.

Should, however, offences of this type continue we look to the Management Committee to deal with the matter more firmly than appears to have been done in the past.

---

---

Your Leading  
Suburban Store . . .



CLEMENT FREEMAN & SON, LTD., WAVERTREE ROAD, LIVERPOOL 7

---

---

## BIG HITTERS WERE QUELLED

THE playing season opened with a rush of surprising results—surprising, that is, to all but our so-called prophets, who, after a match, “knew that would happen.”

Homecroft, starting with a 10—0 victory over the rather more enthusiastic than forceful African Oil Mills team, got the shock of their young lives on October 31 when “experienced” Balfour entered Wallasey Y.M.C.A. with a point less than Homecroft and returned with a point more, the result of an easy win by nine sets to one.

Even Roy Jones was well and truly “seen-off,” two-straight, by Reg. Hetherington and Norman Jones. Les. Davies won his two sets in his own most devastating fashion and Eileen Mansell made her contribution of two sets. Only Ken Harold failed very narrowly to J. Rimmer.

Altogether a typical Balfour win over big hitters who never got the chance to bash.

### Not worried

After their heavy initial defeat, African Oil Mills refused to be worried, however, and out of five matches have won two, each by a fair margin. At home particularly, they promise to give the best a hard struggle to record any success, even before Bill Pierce returns to the fold, probably in January.

In their first season in our division, Bibby's have made a good start with two wins, but Acacia, also newly promoted, have opened anything but auspiciously and are finding it heavy going, Bob Roberts, apparently not yet being disposed to assist them.

Despite their lack of success—they have yet to gain a point—they are still a happy team and comfortable in their new quarters.

Birkenhead Y.M.C.A. also are finding points hard to come by but I feel that their promising young players might soon pull their team through to a higher position in the league.

The absence of Joe Watts, through the important matter of getting married, has depleted the 15th Crosby strength for a while.

Early in the season Rafters “A” held Balfour to a division of the points and may yet have a say in the championship, but their “senior” team are not doing so well, though, in company with Oakhill and Balfour “A” (a young and well-balanced combination) they are hanging on to the leaders' tail waiting for one of the first three to slip up.

At the end of last season, Anfield enjoyed the doubtful honour of holding up all the other teams in the division. This season, with the greater levelling-up in the standard of play, when anything can happen, and usually does, the Anfielders are well clear of the foot of the table and not to be treated lightly by anyone.

---



---

## for Table Tennis

### BUKTA T.F. SHIRTS

IN ALL SHADES

Shoes, Singlets and Clothing

### BATS

including BARN, JOHNNY LEACH  
JACK CARRINGTON, HELEN ELLIOT  
PEGGY FRANKS, HAYDON and many  
OTHERS

### All Makes of BALLS

including  
BARN, HALEX, VILLA, METEOR

### BAT COVERS

Table Nets and Equipment

PHONE ROYAL 8596

## F. CUTTS & SONS

COMPLETE SPORTS OUTFITTERS

2 COLQUITT ST., LIVERPOOL 1

## Hard Matches Are The Order

NOW that the season is well on its way, the only thing that one can say for certain in the Second Division is that no team can be sure of victory over another. Nearly all matches played so far have been hard fought and produced close results.

One such game was played at Hoylake Y.M.C.A. where Homecroft "A" were defeated by six sets to four, after an excellent and exciting struggle. Bert Harkness (Hoylake) and Harrison had a fine, open game, the latter winning by 21—23, 21—15, 22—20 after Bert led 17—13 in the third game, but a few mistakes cost him the game.

Kenrick (Hoylake) had a good match, winning both his games, while Arthur Lee (Homecroft "A") played well to beat the unorthodox Harold Vaughan 21—16, 21—17. At four games all, Geoff Ball met K. Field (Homecroft "A") and what a struggle they produced! Ball won 22—20 in the third,

but I will always remember Field scraping the paint off the wall in retrieving some excellent driving by his opponent.

Congratulations to Hoylake in holding Balfour to a draw and so re-opening the question of leadership.

### Never gave up.

Wallasey Juniors need not be discouraged by their defeat at Anfield, where they went down 8—2. Without Andree Jones, their No. 1, the result was never really in doubt, yet they fought well and never gave up. L. Gee, Anfield's No. 1, was too strong for both Exell and Cox, winning both his games in two straight, but Exell played grandly to defeat C. Fay by 16—21, 21—16, 21—13. As he gained confidence, Exell's long, wide sweeping backhand drive came more and more into evidence, and at the end he was hitting confidently on both flanks.

Cox, who gained the Juniors' only other success, is a tall, well-built lad and seems the most experienced all-round player in their team. Maher (Anfield "A") was too knowing for his opponents, though M. Davies, in the last match of the evening, ran him close by defending grimly all the way.

Ken Jones, Bohemians' secretary, tells me that McManus, whom many of us remember playing for Electric Supply two years ago, has signed for them, but that this good news (or bad, depending which side you are on) will be offset by Don Young's departure from the district in early December. Nevertheless, they should be strengthened by these moves.

St. Michael's, playing away to them, lost 8—2 and it looks as if they will have an unhappy season. K. Wright, their No. 1, has, I understand, been called up and he will be sorely missed. Rigby (St. Michael's) was in good form and his game with Young was, apparently, outstanding, both of them hitting and counter-hitting splendidly, Young just getting home 21—19 in the deciding set. Rycroft, Keddie and Young won two sets each for the Bohemians, while Rigby and Carney gained one apiece for the Saints.

---

# Whitty's

for

## TABLE TENNIS

15 BASNETT STREET  
LIVERPOOL 1

ROYAL 3011

## GUNS, PARADES, FIRE CALLS

**CHESHIRE** Lines, dark horses maybe, hold pride of place after the first month's play. The last 100 per cent. club in the division, they are setting a cracking pace and have numbered among their victims the formidable Kingsway who commanded a higher final league placing in last season's Fourth Division.

Close on their heels were Lucem until St. Joseph's took them by surprise and left Radiant House with two points in their pockets as the result of a 6-4 victory. It also had the effect of lifting Victoria Park, the only other unbeaten team, into second place, so no one will object if I hand the bouquet of the month to the Saints for their victory.

### Unbeaten teams.

It's a hard life for individuals however, with four only unbeaten. This proud quartet consists of Dunlop's E. Davies and Kingsway's E. Smith, both with eight sets from four games, followed by M. Brown (Kingsway) and D. Foulis (Lucem) with six sets from three games. Perhaps you realise now why I say formidable Kingsway. Their regular Nos. 1 and 2 are numbered among these four.

It was bad luck Brown, an ex-First Divisioner, could not turn out against Cheshire Lines but this does not detract from the Railwaymen's convincing 8-2 victory. E. Davies is the Widnes player and Don Foulis is, of course, Don Foulis.

### Tail drooping.

Davies, incidentally, anticipates a change of occupation in December, and with P. Higgins, their No. 2, also expecting a move, Dunlop will need to make a big effort at team building if they are to steer clear of the lower positions in the table. Their tail at the moment is not wagging strongly enough to encourage great hopes of success if it has heavier burdens to bear.

They have the most spacious lay-out in the division at Speke and have housed representative games—another example of those excellent conditions mentioned in our last issue.

It is surprising to find the Police in a lowly position. They have a wealth of talent and are ably assisted by "noises-off" during their home matches. Of course duties interfere seriously with team selections and A. Heague has probably the most difficult job of all secretaries in trying to "keep tabs" on his players and their duty rotas. If your club does meet a full strength Police team—you have been warned!

Watch also their arms. Dick Hough and A. Scott, in particular, reach to shots which appear winners and would beat normal-size arms, but not theirs. A. Heague is a wholehearted player and with J. Conroy and D. Gauld their top five will challenge the division's best. But what about the "noises-off"? I was determined to get in that crack because on each occasion we have visited the Police we have had the proceedings enlivened by a fire call with its attendant rumpus, a shooting match—yes guns going off—or a parade of Specials, and despite assurances that this only happens to our team and cannot happen again, we are taking our ear plugs next visit.

---

## Clubroom Chatter

Coincidence. The first match which Bohemians played on their resumption after the war was away to Leyfield. The first match for Bohemians Ladies, formed this season, was also away to Leyfield Ladies.

Ossie Blenkinsop of Oakhill apparently believes in making practice as difficult as possible. He has reduced the size of a racket from six inches in diameter to about three and a half inches to accustom himself to always hitting the ball with the centre of his bat.

## Thorndale Hit Headlines

NEARLY a quarter of the season is now behind us, and already the division is showing signs of settling down. Last month, I mentioned Wallasey Juniors as being a team to watch; but how wrong I was, it is the other Wallasey side—Thorndale—who have hit the headlines.

I saw what promised to be their hardest match so far, at Waterloo Dock, but whether the Railwaymen were having an "off night" or the Wallaseyans were inspired, I do not know, but it was not the needle affair I had anticipated. My impression was that Waterloo Dock were a little haphazard in their play, although you could sense they were always trying.

I feel sure that they have the material, otherwise they would not be still holding their own, after having played the stiffest programme of any team in the division. What their players need is guidance in the finer points of the game,

to add that final polish to an otherwise workmanlike team.

Thorndale, on the other hand, seemed to possess this finesse, and showed more accuracy in their play. I have no doubt that if they continue in this manner the division will surely be theirs.

### Scored most points

As for the other teams, Liverpool Y.M.C.A. and Port Sunlight are also setting a good pace, both having only fallen to Waterloo Dock. Although in both matches, five sets were decided by a third game, the match against Port Sunlight was far closer, as the sets totalled 13 against 12, but the points were 480 against 477 in the soap factory's favour.

In the middle of the table stand the "meat" of the division—Rafters, Bohemians and Osterley—the teams with the least worry, not having either a winning or losing sequence to uphold or dispel. These are the positions which, I think, obtain most enjoyment from their game, feeling elated when winning, but not too disappointed at dropping a point.

I am sorry to see Domestic Mission and Aigburth in the lower half of the table, after having come from higher divisions, although with depleted sides. I hope that the breakaway at Aigburth will not cause any more back sliding, and that Walter Gale's departure from Domestic Mission has not caused any domestic strife in the playing performance of their members.

What has happened to Wavertree Community, who finished last season ahead of the Y.M.C.A.? And Wallasey Juniors, West Region champions—the doldrums are not the place for you, so how about picking up your socks, and a point or two at the same time?

I trust a number of you are having enjoyable and victorious games in the Maxwell Fyfe Cup, and that you will all give a good account of yourselves in the Readman Cup. How about two of you this year emulating the run into the semi-final that St. Michael's had last year?

---

## D. M. SINGER

### SPORTS OUTFITTER

---

FOR ALL TABLE  
TENNIS EQUIPMENT

FISHING RODS  
AND TACKLE

TENNIS, CRICKET  
HOCKEY, FOOTBALL  
BADMINTON

*All Kinds of*

INDOOR GAMES  
ICE SKATES & BOOTS

RESTRINGING  
& REPAIRS  
QUICK  
SERVICE

---

## D. M. SINGER

12 Exchange St. East, LIVERPOOL 2

Tel. CENTral 1987. 3 mins. from Exchange Stn.



## THE LINNETS BREAK A RECORD

AS I commence these notes the words of Jim Green, the Linnet captain, ring in my ears. "We hope to be challenging for honours at the season's end, and the match between English Electric and ourselves will have a direct bearing on the ultimate championship."

Linnet won this encounter 7-3 and at the moment are the only undefeated side in the division. It was English Electric's first defeat for a year.

Linnet are strongly led by Green, their only pre-war player, and Short (who hails from Taxes). Stonewall Mason will be difficult man to defeat; Mansfield and Dutch are having a tussle for the No. 5 position and, with Charlie Grimes, form a strong combination with a suspect tail.

I cannot mention this club without a word of praise for the excellent club facilities which must rank with the city's best. This is a club with a great future.

Anfield B are a team who are just running into form as their defeat of Elm Hall Drive, previously undefeated proves. Spud Murphy an old campaigner and Beryl Ward one of our four lady players were mainly responsible for this victory both winning two sets.

The Anfield flag is also being kept flying by "Captain" Leatham and Roberts two old friends of ours; ably

assisted by Hughes, a nice open-style player, and Ken Corey, a penholder who has just returned to table tennis after a couple of year's absence.

Cup games are now in full swing, among the best results received to date are Linnet's defeat of Westfield (Div. 3) 7-3, when Mason and Dutch obtained maximum sets, and the English Electric defeat of Waterloo Dock, Smitton's two sets settled the issue. Both our teams played on foreign soil.

The division had bad luck in having six teams drawn against each other, the two results received show Linacre forcing a draw at Taxes and then crashing 7-3 at home, and Cadwa winning 7-3 at Anfield B.

A rumour did reach me that the mention of Liverpool Y.M.C.A. (Div. 4) is a sore point with Victoria Park A and English Electric. Congratulations to Aigburth Meths. on their first win, 8-2 over Vagabonds. Now what about a league win?

The league games are running as close as I had anticipated, with about six teams fighting for second place. Can one of these break the Linnet run? I hope so, then we will have seven teams battling for the title and more than a little fun.

To the Crafters and company go the title of the hard luck team of the month, four points made the difference between 4-6 and 6-4 against Linnet. Tough luck Cadwa!

---

AFTER THE GAME . . .

**MOORHOUSE'S  
LEMONADE**

All Enquiries to—

**MOORHOUSE BROS., 4 BACK GILFORD ST.  
ANField 248. LIVERPOOL, 6**

# R.A.F.A. Hold Point Lead

WITH five league matches now been played R.A.F.A. are 'bang on' with full marks while the R.A.F., have 'pranged' their way into second place with Birkenhead Y.M.C.A. Juniors in hot pursuit, each having gained nine points.

Thus the league is still wide open, despite the glorious strength of the former airmen.

In the middle section there is still likely to be some change as some of these teams have not yet met the tougher opposition. Three teams have yet to gain a point, but the season is young and optimism runs high.

Among the individual performances two are outstanding—E. Morris, (R.A.F.A.) and J. Finch, (Birkenhead Y.M.C.A. Juniors), who are the only players with 100% records over the five matches.

The longest game so far was between Chris Nichol (Burrowdale) and Bill Jackson (Cosco). It went to 31—29 in favour of Chris, a player of great promise, but there was also a marathon set between J. Kaigin (Birkenhead Y.M.C.A. Juniors) and G. Ithell (St. Peter's) which resulted in 24—22, 20—22, 25—23 in favour of Kaigin.

### Record went

After four matches Birkenhead Co-op were the only unchanged team but on the fifth a change was unavoidable, and bang went their unbeaten record, Cosco winning 6—4.

Two matches in the Maxwell Fyfe Cup, played at the Co-op club, saw Albert Barnes (Cosco's No. 4) lose to A. Simpson (Port Sunlight) 22—31, 27—31. Barnes, best known for his heavy chop and back-hand flick, had to give best to a more experienced player.

The second match was a thriller with a touch of drama and was between Norman Cheshire (Co-op's No. 1) and his opposite number for Thingwall, Ken Peters. Cheshire took the first game 31—26, but in the second Peters

held a lead at 30—26 when Cheshire settled down to make up arrears. At 30—29 he hit a hard drive just off the table but on to Ken's bat. Two more quick points and Cheshire went into Round one.

Other results in the preliminary round were J. Brown (Cosco) beat Small (Port Sunlight) and W. Blundell (Thingwall) lost to Langley (Hoylake B).

As might be expected every team in the division entered for the Hyde Cup. Ten teams are in the second round and two have to await the result of replays.

In the second round of the Readman Cup, Claremont gained a decisive win over Vagabonds while Thorndale A were held to a draw at home by R.A.F.

Ladies, why not insist that your skippers put your title or christian name on the score cards? It must be confusing for the statisticians of league, division and region when making records from the cards.

---

● SPORTS SPECIALISTS

● All E.T.T.A. Equipment

## GRIFFIN & EVANS

(EVANS BRISTOWE LTD)

Telephone :

BIRkenhead 2918

44 GRANGE ROAD WEST  
BIRKENHEAD

## **PEN PERSONALITIES**

Vic Chesham

**ALTHOUGH** Vic Chesham played a little table tennis before the war, he is one of the few top-class players in Liverpool who can be described as a post-war player.

On leaving the Forces he soon achieved fame with the successful Ministry of Supply side. During one season he not only won every set but dropped only one game!

Not surprisingly he migrated to a First Division club, Rafters, and for two seasons was a successful No. 2.

Employed at the Ministry of Labour, he has this season joined their table tennis club, Livex. It will be surprising if his skill is not reflected by a rise in their fortunes.

Although Vic has not been over-successful in open tournaments, he has been men's singles champion of the North-West Region of the Ministry of Labour for some years, and with F. Lawson, also of Livex, holds the men's doubles title.

He has represented Liverpool many times, nearly always with success.

His interests are mainly centred on table tennis, but he is no mean lawn tennis player with Hoylake Y.M. during the summer.

J. C. Coveney.

On any committee it is always invaluable to have a member who rarely brings forward contentious matters but whose opinion when required is one which invariably carries much weight.

Such a person is John Coveney, who has served on the Management Committee for several years, and who, by reason of the wisdom of his views, is held in great respect.

John joined the Liverpool Y.M. in 1933, and until the outbreak of war, when he enrolled with the R.A.F. he was a leading light in the table tennis section holding the post of secretary for several years.

After returning to Liverpool he had a big hand in the formation of the African Oil Mill club, and had a good deal to do with their steady progress to the First Division.

*Continued at foot of next column.*

## **Generosity of Railwaymen**

By J. H. C. Hughes.

**THE** meeting of the two previously all-conquering Fourth Divisioners, Waterloo Dock and Thorndale, ended in a comfortable 8-2 win for the Wallasey club, though they were clearly the better team on the night's play, their victory would not have been so great if their opponents had not been so generous in giving them points.

For instance, J. Morgan (Thorndale's No. 1) was 18-20 down when L. Burrows very kindly served the next two into the net, a gift that Morgan did not spurn.

There were many similar acts of charity on the part of the Railwaymen, though not at quite such a crucial stage, and at one time it seemed as if J. Gallagher, the Thorndale secretary, was going to repay them, but he stopped when he remembered that he was a visitor and that charity begins at home.

Both Dunn and Webster will remember their long games against J. Rebecca with his half-volley defence—shades of John Leece with Oh! what memories.

R. Wiseman, the old Homecroft player proved too strong in defence for Jack Seddon, but the Waterloo Dock man takes full marks for the neatest and smartest appearance I have seen at the table this season.

Through Thorndale getting away to a 3-0 lead the match was never exciting but it was always interesting and one thing it did show was that both Waterloo Dock and Thorndale could hold their own in a higher division.

Incidentally the Thorndale players tell me they were very impressed with the play of 16-years-old A. C. Taylor of Litherland in a recent cup match. What about it Mr. Neill?

---

As a player he is an exponent of the unusual type, the 'deadpan' face and various mysterious types of service peculiar to himself making him an opponent of some complexity to those meeting him for the first time.

# LEAGUE

up to Week Ending

## First Division

	P.	W.	L.	D.	F.	A.	P.
Balfour .....	7	6	0	1	60	10	13
Rafters "A" .....	7	5	0	2	51	19	12
Homecroft .....	7	6	1	0	48	22	12
Balfour "A" .....	7	5	1	1	40	30	11
Rafters .....	7	3	2	2	44	26	8
Oakhill .....	7	3	3	1	31	39	7
Anfield .....	7	2	3	2	34	36	6
African Oil .....	7	3	4	0	31	39	6
Bibby's .....	7	2	5	0	27	43	4
15th Crosby ...	7	2	5	0	21	49	4
B'head Y.M.C.A.	7	0	6	1	16	54	1
Acacia .....	7	0	7	0	17	53	0

## Second Division

Balfour "B" ...	7	6	0	1	52	18	13
Hoyleke Y.M.C.A.	7	5	1	1	42	28	11
Bohemians .....	7	4	1	2	45	25	10
Homecroft "A" ..	7	5	2	0	40	30	10
Livex .....	7	4	2	1	44	26	9
Bootele Y.M.C.A.	7	3	2	2	42	28	8
Anfield "A" .....	7	3	3	1	34	36	7
I.C.I. ....	7	2	3	2	37	33	6
Oakhill "A" .....	7	0	3	4	27	43	4
Wallasey Jnrs. ....	7	1	6	0	23	47	2
St. Michael's ..	7	0	5	2	20	50	2
B'head Y.M. "A"	7	1	6	0	14	56	2

## Third Division

Cheshire Lines...	6	5	0	1	45	15	11
Lucem .....	6	4	1	1	41	19	9
Burlington .....	6	4	1	1	40	20	9
Victoria Park ...	6	3	1	2	39	21	8
Kingsway .....	6	3	1	2	38	22	8
Wavertree C.C. ...	6	3	1	2	36	24	8
St. Joseph's (W)	6	3	1	2	34	26	8
L.P.A.S. ....	6	1	3	2	26	34	4
Balfour "C" ...	6	1	3	2	23	37	4
Westfield .....	6	1	5	0	16	44	2
Dunlop .....	6	0	5	1	13	47	1
Oakhill "B" ...	6	0	6	0	9	51	0

## Fourth Division

Thorndale .....	6	6	0	0	54	6	12
L'pool Y.M.C.A.	6	5	1	0	46	14	10
Waterloo Dock ...	6	5	1	0	34	26	10
P. Sunlight O.B.	6	4	1	1	42	18	9
Osterley .....	6	4	2	0	34	26	8
Rafters "B" ...	6	3	2	1	35	25	7
Bohemians "A" ..	6	3	3	0	30	30	6
Domestic Miss. ...	6	2	4	0	26	34	4
Holly Mount ...	6	1	5	0	22	38	2
Aigburth .....	6	1	5	0	17	43	2
W'tree C.C. "A"	6	1	5	0	13	47	2
W'sey Jnrs. "A"	6	0	6	0	7	53	0

## Fifth Division (Liverpool)

	P.	W.	L.	D.	F.	A.	P.
Linnet .....	6	6	0	0	41	19	12
English Electric	6	3	1	2	36	24	8
Victoria Park 'A'	6	3	1	2	35	25	8
Anfield "B" ...	5	3	1	1	30	20	7
Elm Hall Drive ...	5	3	2	0	26	24	6
Cadwa .....	4	2	1	1	23	17	5
Linacre .....	5	2	2	1	25	25	5
L'pool Y.M. "A"	6	2	3	1	29	31	5
Harold House ...	5	1	3	1	22	28	3
Taxes .....	5	0	3	2	20	30	2
Bootele Y.M. "A"	5	1	4	0	18	32	2
Aigburth Meths.	6	0	5	1	15	45	1

## Fifth Division (Wirral)

R.A.F.A. (B'hd.)	6	6	0	0	47	13	12
R.A.F. (W. K'by)	6	5	0	1	47	13	11
B'head Y.M. Jnrs.	6	5	0	1	43	17	11
Burrowdale .....	6	4	2	0	32	28	8
B'head Co-op....	6	3	2	1	30	30	7
Thorndale "A" ..	6	3	3	0	32	28	6
Cosco .....	6	3	3	0	30	30	6
Hoyleke Y.M. 'A'	6	2	2	2	26	34	6
Claremont .....	6	1	4	1	26	34	3
Thingwall .....	6	0	5	1	20	40	1
St. Peter's .....	6	0	5	1	13	47	1
St. Joseph (w) 'A'	6	0	6	0	14	46	0

## NORTH REGIONAL

English Elec. "A"	6	6	0	0	49	11	12
Bath Street .....	6	6	0	0	45	15	12
Litherland .....	6	5	1	0	45	15	10
Burlington "A" ..	6	4	2	0	31	29	8
W'loo Dock "A" ..	6	3	3	0	31	29	6
Lofters .....	6	3	3	0	28	32	6
Brenka .....	6	2	3	1	32	28	5
Littlewoods .....	6	2	4	0	26	34	4
Catholic Metro. ...	6	1	4	1	16	44	3
Warbreck Moor ...	6	1	4	1	15	45	3
Waterloo Park... ..	6	1	5	0	26	34	2
Lofters "A" ...	6	0	5	1	16	44	1

## NOTE TO CONTRIBUTORS

### Deadline for copy for the December issue

Will all SECRETARIES and Players note the alterations in their Handbooks.

**Division 5 Wirral (Page 61)**—R.A.F.A., B'head

**North Region (Page 64)**—English Electric "A"

**West Regions 1 and 2, and Women's 2 (Page 65)**—nights all altered to FRIDAY. (Pages 66, 67, 68, 69, 70 Quarry Avenue, Bebington.

**East Region (Page 67)**—St. Bartholomews has been

taken over by ANFIELD "D" and the

**West Region (Page 76)**—Creep Inn. The Secretary, 48 Greenheys Road, Wallasey.

These tables may not be reproduced, without the permission of the League.

# E TABLES

ending 17th November

## WOMEN'S—Division I

	P.	W.	L.	D.	F.	A.	P.
Rafters .....	7	6	0	1	46	24	13
Balfour .....	7	5	0	2	45	25	12
Bootle C.D. ....	7	5	1	1	49	21	11
Oakhill .....	7	4	1	2	43	27	10
Bibby's .....	7	4	2	1	45	25	9
Anfield .....	7	3	4	0	30	40	6
Aigburth .....	7	2	4	1	30	40	5
Homecroft .....	7	2	5	0	30	40	4
Cheshire Lines...	7	2	5	0	28	42	4
Littlewoods .....	7	2	5	0	27	43	4
Wavertree C.C. ...	7	0	4	3	24	46	3
Rafters "A".....	7	1	5	1	23	47	3

## WOMEN'S—Division II.

Bohemians .....	7	7	0	0	64	6	14
Linnet .....	6	6	0	0	55	5	12
Beauclair .....	7	4	0	3	53	17	11
Brenka .....	7	4	2	1	39	31	9
Leyfield.....	7	3	2	2	41	29	8
Lucem .....	7	3	2	2	38	32	8
Osterley .....	7	3	3	1	32	38	7
Littlewoods "A" ..	7	2	4	1	27	43	5
English Electric	7	1	4	2	22	48	4
I.C.I. ....	7	1	5	1	16	54	3
Domestic Miss. ...	7	0	6	1	15	55	1
Port Sunlight ...	6	0	6	0	8	52	0

## EAST REGIONAL

Balfour "D" ...	5	5	0	0	42	8	10
Anfield "C" ...	6	5	1	0	42	18	10
R.A.F.A. (L'pool)	5	4	0	1	40	10	9
Bohemians "B" ...	5	4	0	1	36	14	9
African Oil "A" ...	6	4	2	0	40	20	8
Old Xaverians ...	6	1	4	1	20	40	3
Vagabonds .....	6	1	4	1	19	41	3
Osterley "A" ...	6	1	5	0	20	40	2
Leyfield.....	5	0	3	2	16	34	2
R.A.F. M'ments	5	1	4	0	14	36	2
Bohemians "C" ...	5	1	4	0	11	39	2
St. Bartholomews—Resigned, record ex.							

## SOUTH REGIONAL I.

	P.	W.	L.	D.	F.	A.	P.
Tech. Students...	6	6	0	0	48	12	12
St. Michael's "A"...	6	4	0	0	24	19	10
Beauclair .....	6	4	1	1	37	23	9
Livex "A" .....	6	4	2	0	38	22	8
Cadwa "A" .....	6	4	2	0	37	23	8
Linnet "A" .....	6	4	2	0	36	24	8
Victoria Park 'B'	6	2	3	1	31	29	5
Lucem "A" .....	6	2	4	0	31	29	4
W'tree C.C. "B" ...	6	2	4	0	22	38	4
Aigburth "A" ...	6	1	5	0	16	44	2
C.L.C. "A" .....	6	1	5	0	14	46	2
Deaf Institute ...	6	0	6	0	9	51	0

## SOUTH REGIONAL II.

Panto .....	6	6	0	0	54	6	12
Lussac .....	6	6	0	0	50	10	12
Tech. Stud. "A" ...	6	4	1	1	39	21	9
R.A.F.A. (L) "A" ...	6	3	2	1	34	26	7
L'pool Y.M. "B" ...	6	3	3	0	40	20	6
Vauxhall Sports	6	2	2	2	25	35	6
Linnet "B" ...	6	2	3	1	29	31	5
Wavertree Lab. ...	6	2	3	1	23	37	5
Linnet "C" ...	6	1	3	2	19	41	4
Ches. Lines "B" ...	6	1	4	1	21	39	3
Leyfield "A" ...	6	1	5	0	14	46	2
Beauclair "A" ...	6	0	5	1	12	48	1

## WEST REGIONAL I.

R.F. St. Anne's	6	6	0	0	51	9	12
S.S. Mary & Paul	6	4	1	1	38	22	9
Creep Inn.....	6	4	1	1	37	23	9
Wallasey Motors	6	3	2	1	31	29	7
Prenton Meths. ...	6	3	2	1	28	32	7
Cosco "A" .....	6	3	3	0	39	21	6
Thorndale "B" ...	6	2	3	1	31	29	5
Port Sunlight ...	6	2	3	1	27	33	5
Creep Inn "A" ...	6	2	4	0	23	37	4
Burrowdale "B" ...	6	2	4	0	21	39	4
Claremont "A" ...	6	1	5	0	19	41	2
Burrowdale "A" ...	6	1	5	0	15	45	2

## WEST REGIONAL II.

Hoylake Y.M. 'B'	6	6	0	0	53	7	12
B'head Boys Club	6	6	0	0	47	13	12
St. Anne's "A" ...	6	5	0	1	48	12	11
B'head Co-op 'A'	6	3	2	1	33	27	7
Y.W.C.A.....	6	3	2	1	33	27	7
P. Sunlight "A" ...	6	3	2	1	28	32	7
R.A.F.A. (B'd) 'A'	6	3	3	0	33	27	6
S. Johns (B'head)	6	1	4	1	21	39	3
Woodchurch ...	6	1	4	1	16	44	3
Thingwall "A" ...	6	1	5	0	24	36	2
St. Anne's "B" ...	6	1	5	0	16	44	2
B'hd Boys Club A	6	0	6	0	8	52	0

## CONTRIBUTORS.

number issue is Monday, 10th December.  
note the following changes and make the necessary

B'head. Mr. McNaught's private phone is 8321.  
tric "A". Match night altered to THURSDAY.  
2 (Pages 77, 78 and 85)—Port Sunlight. Match  
(Pages 77 and 85)—Secretary's address now

news have resigned and their fixtures have been  
and the match night will be MONDAY.  
The Secretary's address is now Mr. A. Butcher,

about the authority of the Table Tennis Digest.

# WHY VETERANS ARE SUPREME

By J. D. LOUGHREY.

IN the League Closed Championships last season six of the last eight places were occupied by players who were playing table tennis before the last war. It seemed to us that there must be a reason for this apparent supremacy of the veteran and we decided to ask eight players—four who played pre-war and four who are post-war products—for their views.

To them we posed the following questions:—

In your opinion what is the reason for the continued superiority of the older men players in the League, both in tournaments and league matches, over the younger players?

What suggestion would you make to remedy this?

The majority of the replies, which we print below, show agreement on one point—that the younger players have not acquired a sound defence, held to be essential to the game.

Here is what the eight say:—

## Pre-war.

E. J. Rumjahn (Liverpool champion): The young player to-day relies largely on an impressive, dynamic attack, without first mastering a sound defence, regarded as a first essential. This may be because the older player learned his game when the net was 6½ inches high and so had to play every shot on its merits. They too, are all-round sportsmen, with eye, brain and feet co-ordinating more effectively.

To the younger players I would say—footwork first, daily practice in short spells so that every effort can be put into practice and produce easy flowing strokes.

Fred Bamford (Welsh international): Question 1: Lack of the will to win and too many impossible shots attempted. Team spirit, which breeds fighters, is not conspicuous among the younger players.

Question 2: Coaching in tactics: match practice and the guidance of an experienced, possibly non-playing captain at matches.

J. H. C. Hughes (vice-chairman): The older players are better tacticians; have greater patience and steadiness, and do not give away so many points.

As suggestion for improvement I would say recognition and strengthening

by practice, of weak shots; more use of the half-volley push shot; patience to wait for the right ball to hit; tactical planning by study of opponent; never stop learning.

H. N. Holland:—I have my own views on the first question but, alas, space forbids.

As to the second question I would suggest (1) organised general coaching among Y.M.C.A.'s youth clubs, etc., by volunteer senior players; (2) more official League coaches, even from outside if necessary; (3) specialised coaching of selected juniors extending over three or four seasons, embracing tactics, strategy, stroke formation and style; (4) League-sponsored entries in every national tournament practicable; and (5) hiring of a room by the League as a coaching centre throughout the year.

## Post-war.

Les Egerton:—The superiority of the older player is due to the lack of good playing practice for the younger player, coupled with the high cost of the same. The younger players have also not achieved the determination to win.

The only solution I see is for the League to select a few very interested players and pay all expenses for coaching.

Vic Chesham:—Although the general superiority was very apparent in the immediate post-war years, I do not feel that holds true to-day—or at least it would not were it not for National Service. R. Rumjahn, W. Pierce and B. Hand prove my point. Other pups are barking at their heels and only require experience and patience to lead the pack.

A. T. Jones (Regional singles champion):—The older player has more command of each individual stroke; his defensive play is of a particularly high standard. The younger players concentrate more on attack, without first really mastering the art of defence.

I suggest that all young players should thoroughly master one stroke before passing to the next.

C. C. Casselman:—Reason for the continued superiority of certain older male members of League is the fact that pre-war a higher standard of general

(Continued on Page 19).

**G. H. LEE & Co.**  
**Sports Department**

*for All*

**TABLE TENNIS EQUIPMENT**

---

BATS BY BARNA, BERGMAN POSTS, NETS, BAT COVERS  
BEREGI, CASOFSKY, FRANKS SCORE PADS. VILLA, BARNA  
CARRINGTON, HAYDON HALEX AND METEOR BALLS  
LEACH, ROWE, ETC. CLUB MATCH & TOURNAMENT  
TABLES AND TOPS IN STOCK

---

*ROYAL 7070*

**G. H. LEE & Co.**  
**Basnett St. LIVERPOOL 1**

SEE THE *STARS* BY YOUR  
OWN FIRESIDE THIS YEAR

*Try* **TELEVISION**

— BY —

**STUART & DORFMAN** (Electrical) **Ltd.**

**168-170 West Derby Road**

**LIVERPOOL 6** *Tel. ANField 2106*

---

ONE HUNDRED SETS TO CHOOSE FROM

CASH OR EASY PAYMENTS

FREE TRIAL IN YOUR HOME WITHOUT OBLIGATION  
TO PURCHASE

## Bibby's are the Surprise Team

IT is obvious from score cards that the earlier start this season took several players unawares, and it is taking them some time to get into their stride.

Oakhill were the first to take up last month's challenge when they entertained last year's league champions and forced a draw. I think credit should go to D. Dancaster who, although down 12—18 in the third against May Evans with the score 5—4 in Balfour's favour, clinched the set at 24—22. The rest of the team shared the honours by winning one set each. Winners for Balfour were O. Dickenson (2), A. Brunskill (1) and Ann Allen (2).

Rafters partly avenged the defeat of their menfolk at the hands of Balfour "A" earlier in the week, when they visited the Institute. A drawn result now gives them a point lead. What grand tussles Olive and the twins enjoy. This time they went in favour of the twins. A. Brunskill accounted for Pinkie and P. Grundy, and another tight set was won by L. Robinson 21—17 in the third against O. Southall.

### Dark horse

Runners-up are Bibby's who drew against their closest rivals, Bootle Civil Defence. Outstanding for Bootle was B. Waterson, who accounted for J. Mitchell (*nee* Cooke) and L. Rimmer. Dark horse of Bibby's team appears to be J. Dinwoodie, their No. 5, who saved the day for them against Oakhill by beating both E. Campbell and D. Dancaster.

Beryl Ward had been playing well until she had to leave Anfield. Three of her strongest victims had been E. Moore, Pinkie May and L. Jenkins, and she had also helped her club to score victories over Homecroft and Cheshire Lines.

Wavertree C.C. record two drawn matches. The first was against Aigburth who were, however, without their No. 1, M. Hadden. The second was against Oakhill, when J. Maguire scored two wins against E. Campbell,

after a terrific duel which went to 25—23 in the third.

J. McQue was a little unfortunate to lose 23—25 in the third against Ivy Crafter.

Holidays for J. Brennan meant she was able to help Rafters "A" to collect two points against Homecroft. But for the fact that her appointment has taken her to Kettering, we might have had twins, sisters and brothers, and mother and daughter members of the same club.

### Interesting clash

It will be interesting to watch the clash between Bohemians and Linnet early next month. Both teams are capable of finishing champions as they have each scored convincing wins.

Osterley are finding it heavier going this season as their men's team has first call on Muriel Wilcox, and she is only available for a few of the women's matches. I.C.I. were quick to take advantage of this and scored their first win against them.

When Beauclair get over their "newness" they should be capable of upsetting any promotion plans. Greetings to their latest recruit, Mezey Chezey, who hails from the same country as the maestro—Victor Barna—and therefore adds further international flavour to the club.

One of last month's surprises was the defeat on their own table of Lucem by Brenka. P. Hughes and P. Smythe won both their sets and F. Murray and J. Hellon one set each. Brenka also scored a victory over Littlewoods "A" and did well to force a draw against Beauclair.

Our opponents in the second round of the Rose Bowl early December will be Bradford or Burnley. Keep a look-out in the press for the date and venue.

I shall be glad to receive news of league matches and Foulis Cup events from club secretaries and captains.



## Saints Chase Saints

By N. H. Holland.

Healthy competition is the lifeblood of any league, and it is encouraging to find, four weeks from the season's opening, not a single team in our Division without a victory to its credit.

Cock of the walk are St. Anne's with maximum points from four matches. The only players to take sets from them were S. Gallacher and W. Jackson (Cosco "A") and J. Prescott and K. Prowse (Creep Inn "A").

In their opening match R. Lee was losing 11—20 to Mrs. Ruth Nicoll (Burrowdale "A") but fought back to win 22—20 and take the next game 21—18, proving once more that no game is lost until the last point has been scored.

### Coming to fore

SS, Mary & Paul have made an excellent start. They dropped their first point recently against Creep Inn but two of the sets were extremely close, Mrs. Sheila Langley (Creep Inn) beating J. B. Sweeney 24—22 23—21, and O. E. Roberts (Saints) beating D. Wood 21—19, 25—23.

That reminds me that Mrs. Langley is rapidly becoming one of the foremost players in the division. Her only defeats so far have been by F. Kelly and V. Jones (St. Anne's), and the latter only won by six points in three games.

While Thorndale "B," Wallasey Motors and Port Sunlight are jostling Creep Inn for third place, the remaining six teams are engaged in another battle to decide the leadership of the lower half of the table. That position is at present held precariously by Prenton Methodists as they have only one point lead over Burrowdale "A," Creep Inn "A," Cosco "A," Burrowdale "B" and Claremont "A" a state of affairs which augurs well for the future.

Leading set-winners are C. Dixon (Thorndale "B") and E. McGenity (St. Anne's) eight out of eight, J. B. Sweeney (SS, Mary & Paul) and R. Oldfield (Wallasey Motors) seven out of eight, and M. Doherty (St. Anne's) and Mrs. S. Langley (Creep Inn) six out of eight.

In his first four matches C. Dixon lost only one game. This was to D. Chalkley (Port Sunlight), who also has noteworthy set wins against J. E. Baird (Burrowdale "B") and Mrs. B. D. Dixon (Thorndale "B") to his credit.

## Their Success Continues

By H. P. Harkness.

WITH a third of the season's matches played it seems as though Hoylake Y.M.C.A., Birkenhead Boys' Club and St. Anne's, are going to carry on in Division 2 where they left off in last season's Youth Division. So far the other clubs have failed to break their monopoly of the top three places, but Co-op "A" and R.A.F. Association "A" will be ready to step in should the leaders falter.

At the other end of the table Boys' Club "A" will find sets hard enough to win without giving them away in bundles of ten by default.

Visitors to St. John's will be pleased to know that their leader, the Rev. Howarth, (surely unique in local table tennis circles) has plans for improving the club when time and funds permit.

Best wishes to Mr. Howarth in his efforts which deserve to succeed.

### Good wins.

So much for team news this month. What of the individuals?

All our entrants in the Maxwell Fyfe Cup have given good account of themselves. Tony Tottey (Hoylake) knocked out the former West Region captain, Don Grant, of Port Sunlight; Colin Langley (Hoylake) beat W. Blundell of Thingwall's first team in straight sets; J. Barnes (Port Sunlight "A") took a game off First Divisioner Bill Stredder, and team-mate L. Small only just lost to F. Brown of Cosco.

It's interesting to know who are our leading players and by working on a percentage basis on the sets played plus the awarding of five points for a win over a No. 1, four points for a win over a No. 2, and so on, I rate the following our best five in league play up to the end of October:—1, W. Bevan (R.A.F.A.) 129 pts; 2, A. Tottey (Hoylake) 117; I. Mackie (Hoylake) 116; 4, D. Murray (St. Anne's) 112; 5, W. Alcock (Hoylake) 107.

Gaunt (Thingwall), Duffy and Sullivan (St. Anne's) and one or two others could get into next month's list.

## YOUNG PLAYER OF PROMISE

THE season is now six weeks' old and I invite my North Regionaires to step inside our showroom to inspect our display.

First interest will be on our new lines and to seek answers to such questions as "Have you anything really good?" and "Do you think you stand a chance of winning the Forrest Cup?" I assure you I have nothing under the counter.

First of our new lines is Litherland—a capable young side who play good enterprising table tennis and will always be challenging the leaders.

A. C. Taylor at No. 1, has won his first ten sets. He is young and capable of hitting the headlines in the near future. Mr. Jack Hughes, our Vice-Chairman, was very impressed by him. At No. 2 is his brother, A. R., close on his heels.

### Game fighters

Catholic Metro. are a mixed team, playing either two or three ladies each match. They fight right down to the last point and are popular with all clubs. They have proved themselves worthy of a place in our company.

With the two Lofters teams I must be modest. This newly-formed club of exiles from Anfield, Brenka, Linacre, Bootle Civil Defence and Waterloo Dock is an extremely happy one. Their ambition is unique, for it is not to finish at the foot of the table.

Bill Askew, back in the game after a long absence, is now striking his true form and will be knocking at the door for Regional honours. Norman Williams has revealed extraordinary fine form and has proved to be an unexpected pillar of the first team.

We pass on to Warbreck Moor, not rich in talent but fabulously wealthy in followers. They have found the going heavy but they will benefit from their experience.

Our last new lines is Littlewoods who, if they took their matches more seriously could be a menace to the majority of

the teams. They are a friendly type and we are glad to have them in our League.

Of the old timers English Electric lead the table narrowly and have kept an unbeaten record by all-out attack. Calder, Ashton and Naylor have fine records.

Bath Street, also unbeaten, and Waterloo Park, without a point, are surprise packets to reviewed next month. S. Hurst has proved a worthy successor to Bill Kinnaird.

Burlington's form is astonishingly inconsistent—so unlike veteran Bob Russell (Waterloo Dock) who still mows them down two at a time.

I regret we have no replacements for those all-round stars Morison, Seddon and Wooding. I have seen too many players confining their game to mighty swipes which do not impress but sadly depress me!

---

---

## C.B.C. Catering Services LTD.

*Wedding  
Receptions  
Dances Dinners  
and Fetes*

OFFICIAL CATERERS TO THE  
WEST REGION TOURNAMENT

**14 Bebington Rd. B'head**

Rock Ferry 4290

Upton 3437

## Students Live Up To Forecast

NOW that the first month of matches is over, I am able to assess the relative strength of the teams in my Region.

There have been some very interesting games, well fought out battles, Technical Students have come through at the top and appear to be living up to my forecast last month, although Livex "A" and St. Michael's "A" do not seem to be prepared to let them have it all their own way. Another rival will be Cadwa "A."

Before going further let me congratulate Aigburth "A" on their first win for over twelve months. May this be the end of the run of ill-luck which has been with them for two seasons.

### Narrow Cup win.

In the first round of the Readman Cup, Rafter's "B," who are in the Fourth Division, were only just able to beat Linnet "A" 6-4. P. Mansfield won both his sets for the Linnets, with Sam Sturgeon and G. McSorley adding one each. The match of the night was when Sturgeon beat Cliff Swindles 21-19 in the third game.

Cadwa "A" began the season by losing to Technical Students and St. Michael's "A," but the return matches may see a complete reversal of score, for they followed up by beating both Beauclair and Linnet "A" by nine sets to one. I do not think they will have much difficulty in winning most of their other matches this season.

Their No. 1, N. Plevin, is a stylish player, who should go far in table tennis. In League matches he has won five sets and lost one, and this by a narrow margin. The other four regulars, A. Povall, W. Bartlett, B. Capper and R. Fleming give him able support and add to the strong team spirit displayed in their matches.

Fred Farrell leads Beauclair, having forfeited Second Division status. He has proved of great value to his new club, and may help them on to a higher position.

They are mainly an attacking side, with L. Higham's angled forehand drive and John Atherton's powerful hitting on

both wings. J. McKim, their No. 2, is equally at home on attack or defence, and with R. Morris they make up a happy team. Their Readman Cup match against Linnet was a lot closer than the 3-7 score would suggest.

Panto, who are carrying all before them in the Second Division, are a side of great ability. I have not yet visited their headquarters, but have tasted the medicine they dose out. Without mentioning any names, one of their team won a set 21-6, 21-0—something I would have imagined to be impossible.

### Sugared pill.

It is hard to pick out any star from this team—they are all good—and I shall be surprised if they lose a point this season, although there are one or two teams who are improving. Although they go all out to win, which incidentally is what all teams should do, they sugar the pill by being exceptionally good company away from the table.

On my visit to Wavertree Labour I was impressed with the number of spectators present. Although they are a new club they have several players who do not appear to be newcomers to the game, and I feel that in the near future will be quite a strong team.

Their lighting is not all that is to be desired, but will no doubt be seen to when they have the opportunity. In any fairly large room there should be at least three lights directly over the table, otherwise shadows are cast across and can be very distracting to the players.

## Veterans Supreme

(Continued from Page 14).

play prevailed in League matches, and particularly in inter-city games.

This standard has not been reached by younger post-war players. Main reason for this fact, difficulty of younger members to obtain practise with players of this higher standard.

The war years have made this noticeable gap, and time alone (with hours of practise) will remedy this existing position.

## R.A.F.A. TIPPED AS CHAMPIONS

I was disappointed to find that only four East Regional players had entered for the Maxwell Fyfe Cup. Presumably the thought was "well I can't win, so it's hopeless to enter."

This idea is entirely wrong—nothing is more beneficial than a game against a strange and possibly stronger opponent—and imagine the feeling of satisfaction if you do beat one of your "betters" from a higher division, plus, of course, the experience gained. Let me twist an old saying as advice in plenty of time for the regional Tournament and next season's Maxwell Fyfe (provided it is held under the same conditions), namely—It is better to have played and lost than never to have played at all.

In the Hyde Cup we have already lost two of our members in the first round, namely Vagabonds and Osterley A, but R.A.F.A. and Balfour 'D' have successfully negotiated the first hurdle so that we have seven teams in the second round. Unfortunately we *must* lose one of them because Bohemians C have been drawn at home to African Oil A.

Would secretaries please send me the results of all cup games to enable me to compile my article.

### Two out of cup

After only four matches there are only two undefeated No's 1 in the region, namely, A. V. Wilkinson

(African Oil), played six won six, and T. Partington (Balfour D), played eight won eight. Both T. Brown (Bohemians B) and L. Donnelly (R.A.F.A.) have won seven and lost one.

I feel a little bolder now and tip R.A.F.A. to head the region followed closely by Bohemians B, Balfour D and African Oil A.

The league seems to have settled down into two sections with the aforementioned teams and Anfield C at the top and the rest grouped below them.

The match between Old Xaverians and Leyfield must have been exciting to watch. The result was a draw and only J. Sealey, (Old Xaverian's No. 3) and J. Wilkinson (Leyfield's No. 4) lost both their sets. P. Kelly, (Old Xaverians) and R. Bithall won two each.

Bohemians B and African Oil A produced another thriller and things looked bad for the Oil Mill boys when at half-time they were 5-0 down. Then came the fighting finish, the Oil Mill just going down 6-4.

The outstanding set was between the two No's 1, Wilkinson and Brown, the consistent attack of the former just proving too good for Brown's skilful defence. K. Edgar, defending solidly, amazed all by his deft back-hand flick, kept in reserve, which won the point every time it was used.

---

### The Sports Specialist

TABLE TENNIS EQUIPMENT A SPECIALITY  
Championship Tables, Bats, Balls, Nets, Shoes and Clothing.  
All makes of named Bats and Tables supplied.

# JACK SHARP

LIMITED

Telephone:

ROYAL 4793/4

VISIT OUR SHOWROOMS . . .

**36-38 Whitechapel : LIVERPOOL 1**

# Chatter in the Clubrooms

ANYTHING you can do I am going to try and do better, seems to be the call of the eight years old son of the Linnets' secretary, Jim Green, to his father. He wields more than a useful bat now and is being put under the guidance of Ronnie Rumjahn.

\* \* \*

Nan Lamb has taken over the No. 1 position for Anfield Ladies following the departure of Beryl Ward to Coventry where her Civil Service job has taken her. Another blow to Anfield, but when she has had a bit more experience they should find Nan confident in her new place.

\* \* \*

During a recent storm a thunderbolt struck the house of Aigburth's secretary, Jim Borland, in Lambton Road, doing considerable damage. It was one "drive" Jim could have done without and our sympathy goes out to him.

\* \* \*

Longevity is the boast of some families but the NICOLLS of Burrowdale seem as if they wish to acquire a reputation for stamina. Playing against St. Anne's Mrs. Ruth Nicoll took the second game of her set with E. Richmond at 31—29. Later Chris Nicoll, playing against Cosco, also won a game by 31—29. Is this a family record?

\* \* \*

The sympathy and best wishes of all will go out to Eric Smitton, English Electric's hard hitter, who has gone into hospital with a poisoned leg. Here's hoping you have a speedy recovery, Eric.

It is good to see Mrs. Ivy Crafter back in the Women's Division and playing for her old club, Oakhill. She should be well able to hold her own as their No. 1 when the occasion demands.

\* \* \*

Those who knew Alf Green, Westfield's Old No. 1, will not be surprised to learn that he has still to be beaten since his arrival in Australia last year.

\* \* \*

Good news for visitors to Victoria Park. The club have installed gas fires, so you won't shiver any more. Incidentally we did not know a colour could have so many shades until the Victorians began buying and dying shirts to maroon.

\* \* \*

We hear that a brass band practising 'Gems from the Desert Song' in a nearby room, quite disconcerted some visitors to Bibby's the other night. One of them remarked, "If only they had played the piece right through it wouldn't have been so bad, but they always stopped after the first six bars and went back to the beginning again!"

\* \* \*

R.A.F. West Kirby have bought a pre-war Jaques table and Birkenhead Y.M.C.A. Juniors are considering following their example.

\* \* \*

African Oil Mills will be glad to hear that Bill Pierce is expected home shortly before Christmas, and due for demobilisation soon afterwards. We hope that he has lost none of his ability during his sojourn in Malta.

# Old Head Was Too Canny

LIVERPOOL "A" have opened their season in a winning vein by beating Manchester "B" and Wigan.

The Manchester game had the makings of a tight finish with the score standing at 3—3 but Liverpool took a grip on the game and ran out winners by seven sets to three. Highlight of the evening was Roy Jones' win in two straight sets against Ingber, the junior international, who could not claim a victory.

Wigan did not greatly extend the "A" team, most of the sets finishing in comfortable victories, although both Peter Rumjahn and Reg Hetherington slipped up to give Wigan their two successes.

The "B" team opened their programme with a win over Ellesmere Port "B." W. Rowan (Acacia) and D. Hobbs (Homecroft) played well to win their three sets, but Harris of Balfour seemed uncertain in his first representative game and could only win one set.

Chester however, proved too strong for them in the match at R.A.F. Association, Birkenhead. The foundation of their success was laid by that old campaigner Bill Devine, who won his three sets without conceding a game. Rowan again did well to win two sets; Norman Jones gained the other but Hobbs seemed out of touch.

The ladies' match against Blackpool at Linnet provided another tense encounter, ending with honours even. At one time Liverpool appeared to have the match well in hand with a 4—1 lead but Blackpool rallied and it was not until the last set that Liverpool forced a draw. Full marks to Kay Benson for her defeat of Andree Jones after losing the first game 21—9.

The match was presented admirably before 60 spectators and thanks are due to the Linnet officials for their efforts.

Results to date are:—

Liverpool "A" 7, Manchester "B" 3; Wigan "A" 2, Liverpool "A" 8; Ellesmere Port "B" 2, Liverpool "B" 8; Liverpool "B" 3, Chester 7; Liverpool Ladies 5, Blackpool Ladies 5.

Forthcoming fixtures:—

Nov. 27—Bury v. Liverpool (ladies).

Nov. 30—Liverpool "B" v. Stockport, at I.C.I., Leece Street.

Dec. 8—Liverpool "A" v. Macclesfield at Hoylake Y.M.C.A.

Dec. 11—Ellesmere Port "A" v. Liverpool "B"; Manchester v. Liverpool (ladies)

Dec. 18—Manchester "B" v. Liverpool "A."

Once again Liverpool are drawn against their hereditary rivals, Manchester, in the Wilmott Cup and the match will be played at Christ Church hall, Lark Lane on November 29. The Mancunians are sure to have a strong team out, possibly Casofsky, Baker and Allcock, so that a good game is certain. Make a note of the date and venue and time, 7-30 p.m.

**BRING YOUR  
NOTICES TO US  
for DUPLICATING**



Telephone—CENTral 1505

**"EXPRESS"  
TYPEWRITING  
AND  
DUPLICATING  
SERVICE**

★ 8 HOUR SERVICE  
MODERATE  
CHARGES

**7 & 9 TEMPEST HEY, LIVERPOOL 2**

# Now the Men are Listed

By J. D. Loughrey.

ALTHOUGH I was fully prepared for squalls as a result of my list last month, not a single letter of criticism has been received. True, there were expressions of disagreement with some of the placings in several conversations, but practically everyone agreed with the table when reviewed as a whole.

Now I offer my unofficial ranking for the men, but let me remind you again that these placings are based on last season's play.

Results this season have shown that among both the men and women some radical changes of form have taken place, but they do not influence either of the two lists.

It will be interesting to see if the men have more decided views than the ladies and will feel impelled to put their views on paper. However, here is the way I place the first hundred:—

- 1 E. J. Rumjahn (Rafters).
- 2 R. M. Rumjahn (Rafters).
- 3 } R. Hetherington (Balfour).
- 4 } P. U. Rumjahn (Rafters).
- 5 R. Jones (Homecroft).
- 6 F. Bamford (15th Crosby).
- 7 V. Chesham (Rafters).
- 8 R. Roberts (Acacia).
- 9 B. Hand (15th Crosby).
- 10 F. Varty (African Oil).
- 11 R. Grayson (Rafters).
- 12 L. Davies (Balfour).
- 13 D. Hobbs (Birkenhead Y.M.).
- 14 N. Jones (Balfour).
- 15 K. Davenport (B'head Y.M.).
- 16 J. Watts (15th Crosby).
- 17 A. Lawson (Anfield).
- 18 D. Caldwell (Balfour).
- 19 M. Oakes (Oakhill).
- 20 M. Brown (Homecroft).

Group A.—R. Boyle (Oakhill), J. Delamere (15th Crosby), K. Harold (Balfour), W. Harris (Balfour), A. Lee (Homecroft), A. Linforth (Rafters), G. Newey (Birkenhead Y.M.), J. Rimmer (Birkenhead Y.M.), W. Rowan (Acacia), J. R. Wiseman (Homecroft).

Group B.—F. Cadwallader (Bootle Y.M.), C. Casselman (Rafters), A. Catterall (Oakhill), E. Davies (Dunlop), K. Gaulton (Balfour), A. Miller (Balfour), J. Morgan (Thorndale), W. Postlethwaite (St. Joseph's), E. Smith (Bronze Sports), C. Smith (Bibby's), L. Ross (Oakhill), A. Read (Oakhill), H. D. Vaughan (Hoylake Y.M.), D. Wildblood (Balfour).

Group C.—E. Caird (Rafters), A. Clay (Homecroft), J. C. Coveney (African Oil), M. Donnelly (St. Joseph's), D. Foulis (Lucem), H. P. Harkness (Hoylake), L. T. Harris (Bootle Y.M.), N. Huyton (Balfour), G. Gower (St. Michael's), D. Glass (African Oil), W. Finney (Burlington), A. Montgomery (Rafters), M. Morrison (Burlington), J. Seddon (Waterloo Dock), A. Simpson (Port Sunlight), A. Rycroft (Bohemians), W. Stredder (Wallasey Jnrs.), J. Taylor (Birkenhead Y.M.), B. Townsend (Balfour), G. Williams (Balfour), S. Wooding (Bibby's), E. Wall (Holme Hey).

Group D.—G. E. Ball (Hoylake), C. Bell (African Oil), W. Bintley (Anfield), J. Dancaster (Oakhill), L. Egerton (Acacia), H. Derryhouse (Bibby's), W. Glover (Birkenhead Y.M.), G. Hall (Homecroft), J. Gallacher (Thorndale), R. Hudson (Oakhill), A. T. Jones (Balfour), K. Jones (Bohemians), W. Jones (Balfour), F. Lawson (Livex), L. Lewis (Anfield), R. Keddie (Bohemians), B. F. Kenrick (Hoylake), W. Lamb (Rafters), E. Mandeluff (Liverpool Y.M.), J. Rea (Anfield), R. Renshall (Homecroft), S. J. Railton (Kingsway), K. Wright (St. Michael's), D. Young (Bohemians).

*This Magazine was Printed by*

**Henry Matthews**  
& SONS, LTD.

10-12 Pall Mall, Liverpool 3

FOR HIGH-CLASS  
PRINTING  
BROCHURES &  
PROGRAMMES  
A SPECIALITY

# These are your Letters

## Service Rule

**SIR:**—May I suggest that the following addition should be made to the Service Rule:—

“If a player serves incorrectly the umpire shall call ‘No ball.’ If the striker-out wins the rally following a ‘no ball’ service he shall score a point. If the striker-out loses the rally following a ‘no ball’ service the score shall remain unchanged.”

A. LAWSON (Anfield).

## Unofficial Coaches

**Sir:**—Mr. Cameron’s suggestion in your October issue for a coaching school appears to be one of those beautiful ideals which just won’t work. There must be few clubs where some player is not already an unofficial coach, and the fact that you call him a “Liverpool Coach first class” will not make him any better, nor will he do more for his clubmates. Also, who is going to run the school, coach the coaches, produce the manual, find the premises and, above all, provide the money necessary for such a scheme?

We have 84 clubs in the League. To carry out this plan you will require 84 coaches. You have to train to some kind of uniformity 84 people of varied style and temperament, shapes and sizes. What a job! But even suppose that you manage this, who is going to ensure that the coaches stay with their clubs, do not give up the game, combine in one club, or in fact do anything in the world except coach?

I do agree with coaching, but surely it would be better to allow the existing unknown and un-

official club coaches to carry on in their present obscurity than to spend a lot of money, time, energy and organisation to give them an official recognition which they neither desire nor merit.

If you desire to expand the present coaching scheme, why not allow each regional secretary to contact willing souls who will coach selected regional players until they either fail or reach a standard showing them ready to be taken over by the league coaches. This might prove workable, although there are snags in this as well.—JAMES R. GREEN (Linnets).

—:o:—

## Know Your Rules

It is a common fault in all forms of sport that those taking part do not trouble to acquire a sound knowledge of the rules, both those which govern the actual playing of the game and those intended for its betterment.

We intend, therefore, from time to time to bring to the notice of our readers some of the rules which we find are apparently not so well known to our players as they ought to be, and draw attention first to League Rule 19 concerning dress. It says:

“... all players must wear a sports shirt of a single colour except for a badge of reasonable size. If a cardigan or pullover is worn while playing, it must be the same shade or colour as the shirt. Braces, if worn, must not be visible... rubber shoes to be worn.”

Already this season it has been noted that these points have been infringed. There is no excuse for slovenly appearance.