

FEBRUARY 1922

SD



Vol. I No. 5

PRICE 6

**TABLE
TENNIS
DIGEST**

Official Magazine

FOR THE

LIVERPOOL & DISTRICT TABLE TENNIS LEAGUE

Table Tennis Digest

All correspondence
must be addressed to
The Editor "Table
Tennis Digest," 9
Podium Rd. L'pool 13

Published on the third
Thursday of each month
from October to March.
Subscription for season
3s 9d. post free.

EDITORIAL BOARD:

Joint Editors: J. D. Pattison and J. D. Loughrey

D. M. Foulis

W. Stamp

A. Montgomery

COMMENT

WE have been distressed in recent weeks to receive complaints from more than one source of some examples of bad manners, and we feel that attention should be drawn to them.

We learn with disgust that some of our women players are being embarrassed while playing by personal and highly insulting remarks. In one case the girl concerned was practically reduced to tears.

There are admittedly only a few cases to our knowledge but that this should go on at all is a disgrace, and we have no doubt that the Management Committee would take drastic action if complaints were officially made. May we suggest that if any further instances occur, those concerned should make an immediate and official protest, and in this way rid the League of any undesirable elements.

There is also creeping in an alarming tendency to 'haggle' with the umpire. Indeed, at one game of which we have personal knowledge, the set in progress was suspended while a heated argument went on as to the rights or wrongs of the case. It should not be necessary to state that the umpire is in complete control and his, or her, ruling is not to be disputed by the players, much less by anyone else present in the room at the time.

Again, we notice that one or two club secretaries show a strange reluctance to reply promptly to official communications. Let us remind them that it is not only an offence but also extremely discourteous, to force League officials to send out four or five letters on the same subject before taking steps to attend to the matter.

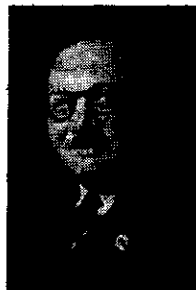
It may be news to some that two prominent clubs avoided expulsion by a matter of 24 hours because their secretaries had persistently ignored such letters, and we wonder if the members of the clubs concerned knew what was going on.

We raise these matters in the full knowledge that such incidents are comparatively rare, but we will not be satisfied until such shocking examples of bad manners have been completely stamped out.

From the Secretary's Desk.

YOU WERE WARNED THAT SEATS WERE GOING

By W. STAMP.



A paragraph in my January notes read, "The advance booking is very good, so don't waste any time and leave it until the last minute."

In spite of this over 150 people were turned away from the Philharmonic Hall for the international match on January 19, including many of our own members. Judging from the demand for programmes (we were sold out at 7-15 p.m.) there was a big proportion of the public among the record crowd.

A very interesting evening's table tennis was provided and congratulations have been received regarding the excellent presentation and the umpiring, which is always an important point when catering for members of the public, particularly if they are having their first glimpse of the game.

Their pleasure is increased when every point can be followed; they are made aware of the state of the match at the end of each game and they receive information as to the identity of the players.

LANCASHIRE OPEN

The Lancashire Open takes place at Squire Gate Holiday Camp and competitors outside the 30 mile limit play on Saturday, April 19. Entry Forms will be available on March 3, from 3 Farndale Close, Liverpool 18. Entries close April 2.

We are playing the preliminary rounds of the Liverpool Closed Championships, as last year, at Dingle Vale School, but the dates as printed in our Handbook have had to be altered to coincide with the school and evening classes Easter holidays period.

The new dates are **Monday to Friday, April 21-25, at 6 p.m.** The finals will be played in the lecture theatre at **Liverpool Y. M. C. A., Mount Pleasant, on Wednesday, April 30, commencing at 7-30 p.m.**

Entry Forms will be obtainable from your Club Secretary who will receive them on March 7. Entries close April 2.

Arrangements are being made to accommodate a record entry and the events will be as in former years, viz., men's singles and doubles, women's singles and doubles, mixed doubles, junior singles (open to players who had not attained the age of 17 years on July 1, 1951), men's regional singles (confined to registered regional and Div. 5 players) and women's regional singles (open to *Regional players and Women players who have not played in any inter-city match this season*). Previous winners are not eligible for either of these two events.

The Flintshire Open will be held in the Rhyl Pavilion on

Continued on page 4

Chatter in the Clubrooms

WE were pleased to see Vice-President, Dr. Rumjahn, at the England v. Wales match at the Philharmonic Hall and to learn he is well on the road back to complete recovery after his recent severe operation.

* * *

Congratulations to another Vice-President and our former Chairman, Mr. Fred Micklesfield on his co-option to the Board of Everton F.C., whose club colours are the same as the Liverpool team (table tennis, of course).

* * *

Players may be interested to know that Geo. Henry Lee have installed a practice table on which purchasers of table tennis equipment may try it out under match conditions beforehand.

* * *

There is no truth in the rumour that when Ken Corey, of Anfield "B," left his kit on the Landing Stage on his way to Birkenhead R.A.F.A., he offered to swim back for it. Nor that he was kept in Dale Street Police Station when he collected it, for losing a set.

* * *

We hear that Jack Dickenson arrived at a home match recently, before the club was open (in itself is worthy of mention). He then proceeded to win both his matches in two straight. There is a moral here somewhere.

* * *

Welcome back to Bill Pierce after two years in the R.A.F. He has played in a few matches for African Oil, but has not yet found his touch. Plenty of practice during the close season should see him back to his old form in time for next season.

Kingsway report excellent progress on their new "old home." It is a brick pavilion and is now just awaiting its final fittings. They have been happy in their temporary surroundings but are looking forward to going home again.

* * *

Liverpool must surely have the youngest player in the country at the present time, as Master Anthony Green (aged eight years), son of Jimmie Green, has just registered for Linnet. We look forward to seeing him in the junior singles of the Closed Championships.

* * *

Against the name of one player chosen for a league match recently was written, "Sorry, playing in handicap tourney." We leave readers to imagine what was said.

* * *

A film on table tennis tips by Victor Barna and Michael Szabados, with a commentary by Raymond Glendenning, was recently shown to the E.T.T.A. It runs for ten minutes and applications for a loan of it can be made to Dunlop Sports Co., 10-12 King Street, London, S.W.1.

Continued from page 3

Saturday, March 15, and as exemption can only be granted until 10-30 a.m., the coach will leave St. John's Lane at 9 a.m. The fare is 10/6 return. Applications for seats (accompanied by a deposit of 5/-) and entry forms should be made to me at Farmdale Close. Entries close on February 27.

Fyfe and Foulis Handicaps

By N. H. Holland.

THE end of February will see both the Maxwell Fyfe and the D. M. Foulis handicap tournaments at the semi-finals stage.

In the men's event the stronger players claimed just over 50 per cent representation in the fourth round but two of the leading players in the women's Division were among the eight quarter-finalists.

The pairings in the two events were:—
Maxwell Fyfe Cup, fourth Round:—

A. R. Taylor (14) Litherland v. R. Jones (SCR) Homecroft; W. R. Crafter (16) Cadwa v. S. Wooding (4) Bibbys; J. Rimmer (3) Homecroft v. L. Davies (1) Balfour; P. E. Morley (1) Rafters v. A. C. Taylor (14) Litherland; A. Tottey (13) Hoylake v. J. C. Coveney (4) African O.M.; R. A. McMullen (12) Rafters v. J. C. Seddon (6) Waterloo Dock; F. E. Varty (1) African O.M. v. T. Larkin (10) Linacre; J. Brown (11) Cosco v. C. Bradshaw (11) Liverpool Y.M.C.A.

D. M. Foulis Cup, quarter-finals:—
W. Finnetty (20) Bootle C.D. v. A. Jones (SCR) Wallasey Jrns; J. Mitchell (5) Bibbys v. N. Markson (20) Harold House; J. Lloyd (20) Bootle C.D. v. P. Spranger (14) Bohemians; D. Mezey (17) Beauclair v. J. A. Preston (16) Lucern.

Runaway wins have been extremely rare in both events, and in the 403 games played so far the average points difference has worked out at 3.8 per game.

Your Committee decided to run these tournaments as an experiment to encourage weaker players and while the initial response was a little disappointing—208 entries in all—this was doubtless due to the novelty of the idea and to the fact that the playing season had barely opened when the entry forms had to be sent in. Next season should see a much larger entry.

Details of the arrangements for the semi-finals and finals will be sent in due course to all club secretaries, with the circular accompanying the entry forms for the Liverpool Closed Championships.

Your Leading
Suburban Store . . .



CLEMENT FREEMAN & SON LTD., WAVERTREE ROAD, LIVERPOOL 7

15th CROSBY WANT WATCHING

BALFOUR still lead the League, with their own "reserve" team—the surprise packet of the season—literally "in tow" behind them. After all, Balfour "A" have only been beaten twice, and on each occasion by their first team.

The 15th Crosby Scouts helped Balfour "A" to get within three points of the leaders by their unexpected but, I understand, deserved 6—4 home victory over Reg. Hetherington's team. True Crosby included Bernard Hand, on leave, at No. 1, but it was Fred Bamford, Joe Watts and Joe Delamere who, by each recording double set wins, did the damage.

Joe Delamere deserves high praise for maintaining a team at all, with so few first-class players at his disposal. So much so, I feel, that but for his efforts, the Crosby team would have disappeared into oblivion long ago.

LOYAL HELP

Bamford's loyalty in turning out so often when his team was sure to suffer defeat must have been a great help. It was fitting therefore, that he, along with the other long-service member, Joe Watts, should share in this latest notable performance.

Watch Crosby now, as they may readily pass Anfield soon, and maybe African Oil Mill, as well as Rafter's and Oakhill.

Championship hopes, or the next best thing, seem to have faded for Homecroft after their bright start. Their first serious jolt was at African Oil Mill, who, without Pierce then, narrowly and surprisingly won 6—4. The sound tactical play of Coveney, Bell, Loughlin and Wilkinson, under the able guidance and captaincy of Frank Varty was generally being too much for the youthful vigour and perhaps superior stroke play of Homecroft.

Roy Jones of the visitors, alone got his two sets, but he was outshone by C. Bell (also two sets) who, with his side leading 5—4, was two set points down in the second game, having lost the first, but rallied to win the next two games for victory.

Both Balfour "A" and Oakhill held Homecroft to a draw, admittedly a better Homecroft, who had made the

mistake of playing a reserve from a much lower team at the Oil Mills, and then Rafter's followed up by defeating Homecroft, also 6—4.

The other works team in the division, Bibbys, have done well in reaching comparative safety from relegation. This feat at their initial entry to the First Division can be attributed, I believe, to the enthusiasm of their able secretary, Cyril Smith, himself having quite a successful season at No. 3.

Cyril isn't at times easy to beat, even for top-class players, with his aptitude for shaping up to attack down one side of the table, looking carefully one way and then hitting hard, usually forehand, down the opposite side without further ado.

Five points below Bibbys lie Acacia, still with depleted strength due to Bob Roberts' continued unfitness to participate in competitive table tennis. Birkenhead Y.M.C.A. however, are worse off, for they are still without a win and experiencing the same difficulties of frequently changed, if not actually short-handed, teams.

for Table Tennis

BUKTA T.T. SHIRTS

IN ALL SHADES

Shoes, Singlets and Clothing

BATS

Including BARN, JOHNNY LEACH
JACK CARRINGTON, HELEN ELLIOT
PEGGY FRANKS, HAYDON and many
OTHERS

All Makes of BALLS

including

BARN, HALEX, VILLA, METEOR

BAT COVERS

Table Nets and Equipment

PHONE ROYAL 8596

F. CUTTS & SONS

COMPLETE SPORTS OUTFITTERS

2 COLQUITT ST., LIVERPOOL 1

No Reprise by Livex

HOYLAKE, by beating their Birkenhead Y.M.C.A. rivals 7—3, are the only Second Division survivors in the last eight of the Redman Cup. But we need not feel disgraced by this almost total eclipse, for all our teams were up against first division opponents, and none of them went down without a hard fight.

Bohemian's narrow defeat by Rafters (6—4) was an excellent performance when one remembers that Peter and Ron Rummjahn were playing for the latter team. In addition Bohemians were without their regular No. 4, Ralph McManus, through illness, although one would not like to say that his presence would have made any difference.

Indeed their reserve, Stan Draper, covered himself with glory by beating Eric Caird and Ridgeway.

SHOT IN MILLION

Incidentally it was during his game with Draper that Caird brought off a "shot-in-a-million" that nearly raised the roof of the Bohemians clubhouse. Caird was running in to the table to retrieve a short shot. As he hit the ball he slipped full length beneath the table. Draper played for his ace only to be amazed by the sight of a bat blade appearing over the end of the table and returning his shot.

Oakhill "A" also deserve a mention for they lost only by 7 sets to 3 when playing away from home against Anfield.

It was not until December 3 that Oakhill "A" recorded their first victory and their position at the foot of the

table looked very precarious. But their recent performances have shown good improvement, for besides their effort in the Redman Cup they have also managed to pull themselves up into a fairly safe place in the table.

Last month was notable for the first defeat of Balfour "B." Playing at the Institute, Homecroft "A" won by 6 sets to 4 and took away two most valuable points which brought them to second place in the division.

Livex, a fortnight later, travelled to the Institute with every determination to do the same thing, or at any rate to make a draw out of it, but Balfour "B" had different ideas. They are a strong, evenly balanced team. Every one of them is a difficult man to beat and they have the strongest tail in the division.

At the interval on the night in question, Livex found themselves 4—1 down and feeling far from happy. However, they fought back and Fred Lawson and Arthur Smith brought the score to 3—4 by narrow wins over George Williams and Sayers.

But Balfour "B" are not easily rattled and W. Jones and G. Gill made no mistake about the next two games to make sure of victory. They won 6—4 and are now, I think, in an unassailable position at the top of the table.

Livex have been handicapped in their last couple of matches by the temporary transfer (on duty) of Dennis Pickering, their No. 5, to Blackburn. It is still uncertain when he will return.

Birkenhead Y.M.C.A. seem doomed for the Third Division next season while either Wallasey Juniors or St. Michael's look likely to accompany them.

The Sports Specialist

TABLE TENNIS EQUIPMENT A SPECIALITY
Championship Tables, Bats, Balls, Nets, Shoes and Clothing.
All makes of named Bats and Tables supplied.

JACK SHARP

LIMITED

Telephone:

ROYAL 4793/4

VISIT OUR SHOWROOMS . . .

36-38 Whitechapel : LIVERPOOL 1

HATS RAISED TO KINGSWAY

IT'S hats off to Kingsway this month.

In the last few weeks they have beaten their closest promotion rivals Cheshire Lines and Wavertree, and in doing so had the honour of being the first to lower the colours of the railwaymen and also avenged their cup defeat by Wavertree.

The latter victory also confounded my previous statement that Wavertree were "tops." However, since then Kingsway have added to their strength Ian Tunstall, of last season's successful Wallasey Juniors team.

Greatest credit for the Wirral club's success goes to Smith, a mighty man is he, playing No. 2. He is unbeaten throughout and is ably supported by Mike Brown who, despite dashes between Manchester University and Liverpool daily, has suffered but one league defeat to date.

While handing out bouquets, a large size one goes to Andy Jones, of Balfour, for being the first to humble Don Foulis. Andy is a first rate drummer and he certainly beat a tattoo on Don's defence.

NO BAD PENNY

The Police did not consider it a bad turn-up recently when Jack Money-penny decided to join the boys in blue. You will remember him with Wavertree. His unorthodox left-hand penholder style is in keeping with Police tradition for he displaces penholder J. Conroy as a regular, which provides those good strength reserves so necessary when dealing with duty rotas.

Incidentally the Police headquarters have been very nicely decorated and despite any earlier comments you may have read in these columns, there are definitely no interruptions these days at Derby Lane where the lads are justly proud of their improved facilities.

Greatest controversy about Victoria Park appears to be centred on the merits of the table. One visitor declared it "dead" because the ball did not bounce 12 inches when dropped from a height of 12 inches. The Park, however, have not solved the perpetual motion problem.

Conversely the league chairman thinks it a good table. It is a Jaques tournament model but it is two floors

up and we leave those still to visit to pass their own judgment.

What of the team? Its greatest assets to quote friendly observers is its fighting spirit. It has a strongish tail; in fact, it has been said that it is very strong but starts from No. 1. Maybe this is because there is no outstanding player among them.

Sid Barrett and Bill Watts playing Nos. 1 and 3 respectively, are newcomers to the club and came from another league, although Bill is no new recruit to the Liverpool League. He was playing in it over 15 years ago. Both have settled in very nicely and these two are mainly responsible for the team's marked improvement compared with previous seasons.

Stan Harvey, filling No. 4 position, is now an old hand. His rugged determination and never-say-die spirit is as much in evidence as ever. To round the team off there are the two Cameron brothers, old originals of the club, and as I am one of them I will refrain from comment on their abilities.

D. M. SINGER

SPORTS OUTFITTER

FOR ALL TABLE
TENNIS EQUIPMENT

FISHING RODS
AND TACKLE

TENNIS, CRICKET
HOCKEY, FOOTBALL
BADMINTON

All Kinds of
INDOOR GAMES
ICE SKATES & BOOTS

RESTRINGING
& REPAIRS
QUICK
SERVICE

D. M. SINGER

12 Exchange St. East, LIVERPOOL 2

Tel. CENTRAL 1987. 3 mins. from Exchange Str.

Few Surprises This Season

A PART from two or three games, which have produced surprise results, the division this year has had a most orderly manner about it. After the first few matches an almost constant order of precedence has prevailed.

Typical of this has been Port Sunlight O.B.'s progress, holding on tight behind the leaders and having their closest matches with Waterloo Dock who are also ready to step in if the division's leaders slip up.

Like the regularity of the division their team has centred around only six players, apart from two matches. This consistency has no doubt contributed towards the majority of their matches being straightforward affairs, with rarely more than three sets requiring a third game for a decision.

RELEGATION DANGER

Domestic Mission are certainly not the team they were a few seasons ago. No doubt the many changes in the team this season has been the reason for their lowly position. Their best performances have been against the Juniors and Holly Mount, but in the latter case the men from the Ministry turned the tables in the return match. With the two leading teams having gained doubles over them, an improvement must be made otherwise the Fifth Division will be their hosts next year.

Two other teams who appear set at the foot of the table are Wavertree C.C. and Wallasey Juniors, but though the Juniors appear doomed for relegation it is in the power of the Community

Centre players to keep out of the danger area.

In their matches they have fought for every point, as shown by the large number of sets requiring a third game for a decision. Though the Bohemians registered the double over Wavertree the matches typify this fighting spirit as eight sets reached a third game in the home match and five sets in the match at the Bohemians.

If only they could have kept a regular team—only the No. 1 has been present each week—I am sure Wavertree's position would have been different, but no doubt evening classes has had a bearing on the availability of players.

Another team who has suffered from a changing composition, with not even one regular player, is the ill-fated Wallasey Juniors. If only the team could have played each week with the fighting spirit that produced that close match against Waterloo Dock in November, I am sure their position would be different.

Though Thorndale and Rafter's have registered the double over the Juniors, with repeat scores of 10—0 and 8—2 respectively, the Y.M.C.A. boys made sure that Holly Mount would not repeat the round score defeat in the first match of the season.

In the return encounter their No. 1, King, showed his team how to do it by defeating our former Vice-Chairman, Charles Miles, in the third game, and then beating their No. 2, Bell, in two straight, although not until the second game's score had reached 33—31. The tension must have been almost overpowering.

AFTER THE GAME . . .

MOORHOUSE'S LEMONADE

All Enquiries to—

**MOORHOUSE BROS., 4 BACK GILFORD ST.
ANFIELD 248. LIVERPOOL, 6**

Taxes Carry Burden Lightly

A team which has not met with the best of luck during the past year is Taxes. Not only have they lost four good players, but they find themselves in the unenviable position of having their department moved to South Wales in the near future.

Eric Gore and Secretary Wilson carry their cares lightly, as the team does their wooden spoon. Wilson is the team's leading set scorer. Miss Campbell still gives great service despite many seasons campaigning; Bennett plods on with little success, and Springs and Dugdale will improve with experience.

Victoria Park "A" are a team who have shown in and out form during the season. Houghton has borne the brunt of the battle in the leading positions, Perks shows the best sets record and Arden and Hunter have proved more than useful acquisitions since the commencement of the season. A good run in the Hyde Cup was ended by the strong Litherland team, after forcing a draw.

In League warfare Linnets seem to thrive on 6-4 victories. Their closest to date being against English Electric when three-and-a-half hours continuous table tennis found eight of the ten sets going to three games. Electric have unaccountably cracked with four successive defeats.

PROMISING

Bootle Y.M. continue to improve, with Stewart and a very young man named Allanson being prominent. The latter is the youngest and most promising player I have seen this season. Coaching selectors please note this miniature Aubrey Simons.

Thomas, a newcomer to Harold House, scored a valuable set in his side's 5-5 draw with Victoria Park A. Chazen for the House and Arden and Cope, for the Park, won two sets.

Harries has started the New Year well for Elm Hall Drive, winning six of his eight sets. A set average of 20-20 gives an indication of the closeness of Liverpool Y.M.C.A.'s recent games.

These included one of Linnets' 6-4 efforts. Rodrigues only dropped one set during this period.

Our ladies play the 5th Wirral at the Thorndale Club, Wallasey on Friday 22.

Performances of our Hyde Cup teams have been good and we emerge with two in the quarter-finals, Linnets and Cadwa. I expect them to reach the semi-final.

Liverpool Y.M.C.A. beat Aigburth Meths.—who have been picking up a few useful points lately—and then lost to the R.A.F. (W.K.)—no disgrace in this. Cadwa scored a fine victory over Birkenhead Y.M. Juniors and Linacre followed in the path of Victoria Park A to Litherland.

Oscar of the month must go to Anfield B who, although drawing at home and away with the R.A.F.A. (B), won their Hyde Cup tie by 26-24 on games—a fine performance against the leaders of the 5th Wirral. They were then drawn against our own leaders, Linnets; drew at home and lost away 7-3. They are a greatly improved side and a credit to our division in every way.

Narrow Defeat in Rose Bowl

So narrow was Birmingham's victory in the Rose Bowl tie—five sets to four—that while one does not put forward Eileen Mansell's handicap to her arm as an excuse for our defeat, there might easily have been a different story had she been properly fit.

Taken all-round our players did well to hold the Midlanders to so close a margin, for they had previously eliminated Leeds without losing a set and defeated Manchester by a substantial margin.

Curiously enough, our greatest weakness was where we are usually strong—in the doubles—but full credit must be given to the Birmingham players, particularly Miss J. McKay, for the way they grasped their opportunities.

Good luck to them!

May be your Last Chance

AS announced last month the West Region tournament will be held on Friday evening and Saturday afternoon and evening, March 14 and 15, at Livingstone Street Baths, Birkenhead. The thanks of all are due to Mr. D. M. Richards, Birkenhead's Youth Welfare Officer, through whose good offices the hall has been obtained.

All Fifth Wirral players are eligible to enter and the entry forms have been posted to all secretaries, so don't give them any peace until they have "handed over."

Sanction was obtained at last year's general meeting for the Fifth Divisions to take part, so it's up to you now to give 100 per cent support to the tournament, particularly as this sanction may not be renewed for the future.

We have now only one representative in the Maxwell Fyfe Cup competition. He is Johnny Brown, of Cosco, now in the last eight. At plus 11 it will have to be a crack player to stop him.

WIRRAL CLASH

Our interest in the Hyde Cup is being maintained by the R.A.F. who stand a good chance of going a step further. Their next opponents are St. Anne's, leaders of West Region 1.

Arrangements are well in hand for the friendly competition between the two Fifth Divisions. The first ladies' match will take place at Thorndale's club in Wallasey on February 22, and our thanks must go to Jack Gallagher and his committee for their willing co-operation. Mrs. E. Baird, Burrowdale's secretary and No. 4, will be in charge of the Wirral team.

With regard to the men's team, Wilf Lansdale and Bill Lowe, skippers of Burrowdale and R.A.F.A. respectively, are joining me to form a selection committee.

My apologies to Tom White of R.A.F., who I quoted last month as having lost three sets to date. The fact is that Tom is only one set short of 100 per cent.

Turning to the league tables R.A.F.A. are still at the top with a point lead over Birkenhead Y.M.C.A. The West Kirby team are a point lower with a game in hand and may emerge eventual champions.

Although the results for last week are not all to hand, I will hazard a guess that not more than three points separate the next five teams—Hoylake "A," Thorndale "A," Cosco, Burrowdale and Co-op.

Claremont would have been worth more than their nine points if circumstances had permitted A. Jenkins to assist them more often.

Thingwall and St. Peter's are having a thin time with only five points each. The latter have suffered a blow by the loss of J. Bordley, their No. 1, to the Forces.

At the foot of the table St. Joseph have gained only one point, but are they downhearted—No!

● SPORTS SPECIALISTS

● All E.T.T.A. Equipment

GRIFFIN & EVANS

(EVANS BRISTOWE LTD)

Telephone :

BIRKENHEAD 2918

44 GRANGE ROAD WEST
BIRKENHEAD

LEAGUE

up to Week End

First Division

	P.	W.	L.	D.	F.	A.	P.
Balfour	16	14	1	1	124	36	29
Balfour A.	16	11	3	2	97	63	24
Rafters A.	16	10	3	3	105	55	23
Homecroft	16	10	4	2	105	55	22
Rafters	16	9	4	3	97	63	21
Oakhill*	15	7	5	3	81	69	17
Anfield	16	6	8	2	73	87	14
15th Crosby	15	6	8	1	59	91	13
African Oil	16	6	9	1	68	92	13
Bibby's	16	5	11	0	66	94	10
Acacia	16	1	14	1	45	115	3
B'head Y.M.C.A.	16	0	15	1	30	130	1

Second Division

Balfour B.	16	14	1	1	117	43	29
Homecroft A.	16	13	3	0	102	58	26
Livex	16	12	3	1	104	56	25
Bohemians	16	10	4	2	103	57	22
Hoylake Y.M.C.A.	16	9	4	3	93	67	21
I.C.I.	16	7	7	2	86	74	16
Bootle Y.M.C.A.	16	7	7	2	79	81	16
Oakhill A.	16	3	8	5	67	93	11
Anfield A.	16	5	10	1	63	97	11
St. Michar's	16	2	11	3	54	106	7
Wallasey Jnrs.	16	3	13	0	59	101	6
B'head Y.M.A.	16	1	15	0	33	127	2

Third Division

Cheshire Lines	16	13	1	2	116	44	28
Wavertree C.C.	16	11	2	3	107	53	25
Kingsway	16	10	2	4	101	59	24
Victoria Park	16	8	4	4	97	63	20
Burlington	16	6	3	7	91	69	19
St. Joseph's	15	7	5	3	80	70	17
Lucern	16	6	6	4	89	71	16
Balfour C.	16	4	6	6	78	82	14
L.P.A.S.	16	4	8	4	65	95	12
Oakhill B.	16	4	11	1	55	105	9
Westfield	16	2	13	1	36	124	5
Dunlop	15	0	14	1	35	115	1

Fourth Division

Thorndale	16	15	1	0	137	23	30
L'pool Y.M.C.A.	15	13	2	0	112	38	26
P. Sunlight O.B.	16	11	3	2	107	53	24
Waterloo Dock	16	11	3	2	94	66	24
Rafters B.	16	9	5	2	87	73	20
Osterley*	15	9	5	1	79	71	19
Bohemians A.	16	7	8	1	80	80	15
Aigburth	16	5	11	0	62	98	10
W'tree C.C.A.	16	4	12	0	57	103	8
Holly Mount	16	3	12	1	60	100	7
Domestic Miss'n	16	3	12	1	54	106	7
W'sey Jnrs. A.	16	0	16	0	21	139	0

Fifth Division (Liverpool)

	P.	W.	L.	D.	F.	A.	P.
Linnet	15	15	0	0	105	45	30
Anfield B.	16	10	3	3	99	61	23
Cadwa	14	9	2	3	94	46	21
English Electric	16	7	5	4	90	70	18
Linacre	13	5	2	6	70	60	16
Victoria Park A.	16	5	6	5	78	82	15
Harold House	13	5	5	3	69	61	13
Elm Hall Drive	15	5	7	3	69	81	13
Bootle Y.M.A.	16	4	8	4	68	92	12
L'pool Y.M.A.	16	5	9	2	69	91	12
Aigburth Meths.	16	1	12	3	45	115	5
Taxes	16	0	12	4	54	106	4

Fifth Division (Wirral)

R.A.F.A. (B'hd.)	16	14	1	1	116	44	29
B'head Y.M. Jnrs.	16	12	1	3	112	48	27
R.A.F. (W.K'by)	15	12	1	2	113	37	26
Thorndale A.	16	7	5	4	88	72	18
Burrowdale	16	9	7	0	86	74	18
B'head Co-op	16	8	6	2	85	75	18
Cosco	16	8	7	1	83	77	17
Hoylake Y.M.A.	16	7	7	2	75	85	16
Claremont	16	3	9	4	66	94	10
Thingwall	16	1	12	3	50	110	5
St. Peter's	16	2	13	1	45	115	5
St. Joseph's A.	15	0	14	1	31	119	1

NORTH REGIONAL

Litherland	15	14	1	0	123	27	28
Bath Street	16	12	2	2	110	50	26
Lofters	16	11	4	1	101	59	23
English Elec. A*	15	10	2	3	98	52	23
Burlington A.	15	8	5	2	77	73	18
Brenka	16	7	7	2	85	75	16
Littlewoods	16	7	7	2	84	76	16
W'loo Dock A.	16	7	9	0	79	81	14
Waterloo Park	16	5	10	1	70	90	11
Warbreck Moor	16	3	12	1	39	121	7
Catholic Metro*	15	2	12	1	39	111	5
Lofters A.	16	0	15	1	35	125	1

STOP

Owing to the fact that the League March, the final edition of the Digest for the

The Lancashire and Cheshire Closed Chain Bark Street, Bolton, on March 22nd. Entries clo

Liverpool Women having beaten Blackpool of the season and should the Liverpool girls w Champions and holders of the Worsley Cup. T Club, 14 Dale Street, on Friday, March 7, com your support. The team will be announced in t

* This indicates Teams who had a home match during week commencing 11th February

TABLES

Ending 16th February

WOMEN'S—Division I.

	P.	W.	L.	D.	F.	A.	P.
Rafters	16	14	0	2	108	52	30
Balfour	16	13	1	2	122	38	28
Bibby's	16	13	2	1	123	37	27
Bootle C.D.	16	10	4	2	104	56	22
Oakhill	16	9	5	2	102	58	20
Aigburth	16	7	8	1	70	90	15
Anfield	15	7	8	0	66	84	14
Homecroft	15	5	10	0	69	81	10
Littlewoods	15	4	11	0	44	106	8
Rafters A	16	2	13	1	43	117	5
Cheshire Lines*..	13	2	11	0	40	90	4
Wavertree C.C....	16	0	13	3	39	121	3

WOMEN'S—Division II.

Bohemians	16	15	0	1	141	19	31
Linnet	16	14	1	1	136	24	29
Beauclair	15	10	1	4	107	43	24
Leyfield	15	8	5	2	94	56	18
Brenka	15	8	5	2	80	70	18
Lucem*	15	7	5	3	86	64	17
Osterley*	15	7	6	2	70	80	16
Domestic Miss...	15	4	10	1	56	94	9
English Electric..	14	3	9	2	41	99	8
Littlewoods A ..	15	3	11	1	50	100	7
I.C.I.	16	2	13	1	37	123	5
Port Sunlight....	15	0	15	0	12	138	0

EAST REGIONAL

R.A.F.A. (L'pl.)	16	15	0	1	143	17	31
Bohemians B ...	16	14	0	2	131	29	30
African Oil A...	16	11	3	2	107	53	24
Balfour D	16	10	3	3	101	59	23
Anfield C	15	8	4	3	85	65	19
Leyfield	16	5	8	3	70	90	13
R.A.F. M'ments	15	4	8	3	55	95	11
Bohemians C ...	16	5	10	1	55	105	11
Old Xaverians...	16	3	10	3	59	101	9
Vagabonds	16	3	11	2	52	108	8
Osterley A	15	2	12	1	50	100	5
Anfield D	15	2	13	0	32	118	4

SOUTH REGIONAL I.

	P.	W.	L.	D.	F.	A.	P.
Techn. Students	16	15	0	1	127	33	31
Livex A	15	12	2	1	105	45	25
Beauclair	15	11	2	2	96	54	24
St. Michael's A..	15	10	3	2	102	48	22
Cadwa A	16	11	5	0	98	62	22
Linnet A	16	8	7	1	80	80	17
Victoria Park B..	16	6	8	2	81	79	14
Lucem A	16	6	9	1	82	78	13
Aigburth A	16	3	11	2	55	105	8
Wavertree C.C. B	15	2	12	1	43	107	5
Cheshire Lines A	15	2	12	1	42	108	5
Deaf Institute...	15	0	15	0	19	131	0

SOUTH REGIONAL II.

Panto	16	16	0	0	144	16	32
Lussac	16	13	3	0	116	44	26
Techn. Stud. A..	16	12	3	1	110	50	25
L'pool Y.M. B..	16	11	4	1	114	46	23
R.A.F.A. (L) A..	16	11	4	1	105	55	23
Wavertree Lab...	16	7	7	2	77	83	16
Linnet B	16	3	9	4	62	98	10
Beauclair A	16	4	10	2	59	101	10
Vauxhall Sports	16	3	11	2	48	112	8
C.L.C. B	16	2	11	3	51	109	7
Leyfield A	16	3	12	1	41	119	7
Linnet C.....	16	1	12	3	33	127	5

WEST REGIONAL I.

R.F. St. Anne's..	16	16	0	0	137	23	32
Creep Inn.....	16	12	3	1	108	52	25
Cosco A*	15	9	5	1	88	62	19
Wallasey Motors	15	8	4	3	82	68	19
S.S. Mary & Paul	16	6	5	5	86	74	17
Pren-ton Meths...	15	6	5	4	72	78	16
Port Sunlight*...	15	6	6	3	77	73	15
Thorndale B ...	14	6	6	2	75	65	14
Creep Inn A	16	6	9	1	70	90	13
Burrowdale B ...	16	4	10	2	56	104	10
Claremont A ...	16	2	14	0	40	120	4
Burrowdale A ...	16	1	15	0	39	121	2

WEST REGIONAL II.

B'hd. Boys Club	16	14	1	1	120	40	29
Hoylake Y.M. B*	15	13	0	2	127	23	28
St. Anne's A	16	11	2	3	118	42	25
R.A.F.A. (B) A..	16	12	4	0	104	56	24
Y.W.C.A.....	16	7	6	3	82	78	17
B'head Co-op A ..	16	8	7	1	79	81	17
Thingwall A	15	5	8	2	67	83	12
Port Sunlight A..	15	4	8	3	62	88	11
Woodchurch	16	3	11	2	47	113	8
St. John's	16	3	12	1	59	101	7
St. Anne's B.....	16	3	12	1	46	114	7
B'head Boys A...	15	1	13	1	29	121	3

PRESS

fixtures do not conclude until the end of this season will be published early in April.

Championships will be played at the Lads' Club, close March 17th. Entry forms from Mr. Stamp.

pool 6-4 now meet Manchester in the last match win or draw they become Lancashire League. The match will be played at Littlewoods Social commencing at 7-30. Come along and give them a hand in the local press.

February but did not send in score cards in time for results to be included in these tables.

Knitting Needles Flew—Stopped

By J. H. C. Hughes

THE Bartholomew Cup tie between Balfour and Bibbys was a case of experience versus youth and after a tense struggle a replay was required.

The course of the game seemed to have a marked effect on the visitors' knitting, for I noticed when they were leading 2—0 all fingers were going, but at 2—4 and 3—5 down it had all been put away, only to reappear when they had a chance to draw level.

The standard of play seemed to be affected by the occasion and those with reputations hardly lived up to them, except Lil Robinson who, in her usual tenacious style, won both her games, though the one against Lil Rimmer was a tough one.

BELOW FORM

Both Nos. 1, Mrs. Dickinson and Mrs. Mitchell, have played better than they did in the first meeting. Gladys Brown played well to beat both Mrs. Dickinson and Audrey Brunskill, the latter being very erratic.

I understand only one of Bibbys' team is over 21 and that Miss Dinwoodie is in her first season. This being so her play holds great promise for the future for she has a nice back-hand defence and forehand attack on which to build. The way she beat Mrs. Allen, not an easy player to beat, was very encouraging.

In both dress and deportment the teams were an object lesson to some of our men's teams, but why are so many girls so slow on their feet, playing on their heels instead of toes and stretching rather than moving to a ball?

The draw was a fair result. Both teams had a chance to win but let the other recover. So to the replay.

The early stages were similar to the first match, Bibbys leading 2—0 after Mrs. Mitchell and Miss Rimmer had beaten Mrs. Dickinson and Miss Robinson. Then Balfour level with wins by Miss Evans and Miss Brunskill over Miss Bannister and Miss Brown. Audrey Brunskill was far steadier than in the first match and, with Gladys Brown's forehand off, had a good two straight wins.

The curious thing was that though the match position was now the same as in the first match, each individual event had gone the opposite way.

Miss Dinwoodie gave Bibbys an interval lead of 3—2 by another promising display against Mrs. Allen.

On resuming Bibbys went to a 5—2 lead with wins by Miss Rimmer and Miss Brown over Mrs. Allen and Mrs. Dickinson.

Now came Balfour's fight back. Miss Evans beat Miss Dinwoodie in three games, the Bibby player finding the occasion too much in the final game, while Miss Evans went from strength to strength.

ELUSIVE GAME

Score now Bibbys 5—3. Just the set-up for a fighter like Lil Robinson and she overpowers Miss Mitchell two straight.

Score—Bibbys 5—4 and still wanting that one game.

Now Bannister v. Brunskill, the latter not nearly so steady as earlier. Miss Bannister seemed rather surprised to find herself leading 17—13, but Miss Brunskill levels at 17—all. Bannister goes to 20—17.

Bibbys now knitting furiously and Sec. Smith smiling, but wait. Bannister cannot believe it, 20—18, 20—19, 20—all. Knitting and smiles vanish. Then 20—21, 20—22. Game to Brunskill. Bibbys have not got that one game yet.

Brunskill makes no mistake in the second game and by fierce hitting blasts Bannister off the table. Game 21—12.

Another draw and games level. Out come pencils and paper to add up the points for the two matches. After much checking and re-checking it was found that Bibbys had won by about 20 points. I say about, for though the three auditors agreed Bibbys had won the actual margin was in doubt.

As the late Sid Field used to say—
"What a performance!"

G. H. LEE & Co.
Sports Department

for All

TABLE TENNIS EQUIPMENT

BATS BY BARNA, BERGMAN POSTS, NETS, BAT COVERS
BEREGI, CASOFSKY, FRANKS SCORE PADS. VILLA, BARNA
CARRINGTON, HAYDON HALEX AND METEOR BALLS
LEACH, ROWE, ETC. CLUB MATCH & TOURNAMENT
TABLES AND TOPS IN STOCK

ROYAL 7070

G. H. LEE & Co.
Basnett St. LIVERPOOL 1

SEE THE *STARS* BY YOUR
OWN FIRESIDE THIS YEAR

***Try* TELEVISION**

— BY —

STUART & DORFMAN (Electrical) **Ltd.**

168-170 West Derby Road

LIVERPOOL 6 *Tel. ANField 2101*

ONE HUNDRED SETS TO CHOOSE FROM

CASH OR EASY PAYMENTS

FREE TRIAL IN YOUR HOME WITHOUT OBLIGATION
TO PURCHASE

Championship Still in Doubt

THE second half of the season finds most teams "pulling up their socks" and making just that little extra effort.

There are several needle matches still to be played, and one of the most interesting in the near future will be Balfour v. Rafter. Both have also to play their return matches against Bibby's, who must be considered serious contenders for the championship, particularly after their splendid performance in the last round of the Bartholomew Cup. They also have strengthened their league position when they beat Bootle C.D. Beryl Waterson, by beating Lil Rimmer 21-10, 21-19, and J. Lloyd by beating N. Bannister 21-22, 19-21, 21-8 and J. Dinwoodie 19-21, 21-19, 22-20, won Bootle's three sets.

There is now every likelihood of a repeat of last year's cup final—between Rafter and Bibby's. Fate has been kinder to Bibby's in the next round, for they have drawn the less experienced Littlewood's, while Rafter has drawn—fortunately for them, at home—Bootle C.D. Bootle, you will remember forced Rafter to a draw when they last played there, and will no doubt be all out to go one better this time.

PAYING DIVIDENDS

Oakhill, who are also capable of getting to the final, entertain Linnet, and it will be interesting to see if Linnet will be more successful than their close rivals, Bohemians, were against Aigburth in the last round when they lost 6-4.

Last summer's coaching is certainly paying dividends for two clubs and, we hope, before long, Liverpool. Gladys Brown and Lil Rimmer have a good record for Bibby's, and Pat Spranger has won several vital sets for her club.

Lil displayed good match temperament when playing in her first match for Liverpool against Bury, and it will be interesting to see how Gladys will fare against the still stronger opposition at Blackpool.

Anfield are again in the news, having been fortunate to secure the services of Marjorie Baron (late Bibby's) to take the place of Edna Gray, who will be out of the game for some time. Our best wishes go to her for a speedy

recovery and early return. Marjorie celebrated her debut by winning both her sets against Pat Grundy and Olive Horner at Rafter.

Oakhill consolidated their position by a convincing victory at Anfield. Ita Howley was the only winner for her side, beating Ivy Crafter 21-15 in the third game.

Cheshire Lines lost a vital match when they entertained Rafter "A," which means their league positions are reversed. Relegation is still a bogey for both, however, and Rafter "A" still can't afford to relax. Here are the scores (C.L.C. names first) which show how close the match was:—

M. Green lost to J. Brennand 12-21, lost to K. Rumjahn 21-14, 18-21, 18-21. A. Keightley lost to J. Brennand 14-21, 23-25; beat S. Swannick 14-21, 21-17, 21-12. D. Hughes lost to K. Rumjahn 16-21, 22-20, 15-21; lost to M. Swindells 15-21, 21-16, 20-22. R. Garner lost to S. Swannick 22-20, 19-21, 19-21; beat L. Keen 21-15, 21-18. E. Hewitt lost to M. Swindells 18-21, 17-21; beat L. Keen 20-22, 21-15, 21-17.

CHALLENGE FADING

Leyfield's challenge to the leaders is fading as they lost to each in successive weeks, and unless something unforeseen happens, I can't see anything in the way of Bohemians and Linnet's promotion, although it looks as if the leadership will be in suspense to the last match of the season.

Beauclair, after beating Linnet the previous month again surprisingly dropped a point to Brenka, who will no doubt be dubbed their bogey.

Playing for Brenka were P. Hughes, F. Murray, J. Hellon, P. Smythe and E. Finnis. It was an exciting and hard fought set worthy of record between P. Hughes and S. Farrell, which the former won 21-19, 19-21, 29-27.

I.C.I.'s opening pair E. Nugent and J. Grundy gave M. Alcock (Bohemians) a run for her money before the Bohemians' player won 19-21, 21-19, 21-9, 20-22, 21-16, 21-12.

There will be many who will envy Flo Jones, I.C.I. and Linnet, who sailed to South Africa on February 8, and will join us in wishing her every success and happiness in her new life.

March 1 is Deadline

By N. H. Holland.

EVERY Welshman knows March 1 is St. David's Day, but may I remind you that it is also the West Region tournament closing date. I hope we shall get through about 300 games with six tables and roughly twelve hours of play. Even so, entries may have to be limited, so the moral is—apply early!

If you are not competing do come along to watch, especially on Saturday. It's a warm comfortable hall with plenty of seats (admission free) and refreshments will be available.

All four events (M.S., W.S., J.S. and Y.S.) will have consolation singles, thus guaranteeing each competitor at least two matches. I had hoped to run a Veterans' Singles also but lack of time makes it impracticable this year.

That reminds me that in a Swedish T.T. magazine recently I noticed men's doubles and women's doubles over there are called "herrdubbel" and "damdubbel" respectively, and the Swedish equivalent of veterans is "oldboys," which to me (being one of them) has a homely ring!

RECORD CHASING

In the League, St. Anne's look like being the third West Region team since the war to score maximum points, a feat previously achieved only by Birkenhead Y.M.C.A. "A" in 1946/7 (sets average 165—15) and by Ministry of Supply (161—19 in sets) in 1947/8.

Meanwhile Creep Inn and Cosco "A" still battle it out for second place. As they have both completed their fixtures against St. Anne's and Wallasey Motors, the issue may be decided when they meet at Virginia Road in March 19.

Here is this month's extract from my log-book of outstanding performances:

R. Shaw (Claremont "A") beat R. Wood (Creep Inn "A") 15—21, 21—15, 25—23; A. W. Otter (Prenton Meths) beat O. E. Williams (S.S. Mary & Paul) 23—21, 21—13; J. E. Baird (Burrowdale "B") beat D. Chalkley (Port Sunlight) 21—18, 11—21, 21—19; A. Butcher (Creep Inn "A") beat W. Bennett (Prenton Meths) 21—18, 14—21 21—16; W. Brown (Wallasey Motors) beat D. Crowther (Cosco "A") 21—13, 21—11; Mrs. C. E. Jones (Burrowdale "A") beat F. Boden (Claremont "A")

Continued at the foot of next column

Reminder to Selectors

By H. P. Harkness.

AFTER all that has been written, both in the national dailies and our own magazine, about the dearth of outstanding young players on Merseyside, the spirited display of several of the youngsters who took part in the West Region's inter-divisional clash at Hoylake Y.M.C.A. last month was most encouraging.

Frank Kelly and Michael Doherty, of the First Division, and Ian Mackie and Tony Gorman, of the Second, could all be among Liverpool's best in the near future, particularly Kelly who, after being officially coached two summers ago, has apparently been forgotten. His devastating form should be a sharp reminder to the selectors that he is still around.

Although Bill Bevan and Mackie fell victims to Kelly's venomous attack, they played excellently in their second games to beat W. Jones and Doherty respectively; the Doherty—Mackie game being the evening's best.

NO DISGRACE

Gorman showed nice control in his win over Cecil Dixon, but Tony Tottey and V. Jones were not at their best against the canny play of Dixon, Doherty and McGenity. The senior division's 7—3 win will be no surprise, but our lads put up a great fight and no more was asked of them.

A challenge has been issued to a Liverpool region and selected players will be notified when final details are known.

Eyebrows will be raised at Thingwall's draw with St. Anne's. The fact that the latter played one short cannot detract from the grand wins recorded by W. Faulkner and Jean Pinguey.

Congratulations to F. Done (St. John's) for scoring his first win after 19 defeats and to Tony Tottey for reaching the last sixteen in the Maxwell Fyfe cup.

The individual merit list is as follows:

1, A. Gorman (B.B.C.) 168 points; 2, W. Bevan (R.A.F.A.) 165; 3, A. Tottey (Hoylake) 163; 4, F. McKeown (B.B.C.) 158; 5, L. Kelly (B.B.C.) 155.

21—13, 21—14; R. O. Roberts (S.S. Mary & Paul) beat J. Meakin (Thorn-dale "B") 22—20, 22—20.

ROYAL ROCK HOTEL

*Pleasantly situated facing
the River Mersey*



**FIVE MINUTES FROM ROCK FERRY
STATION.**

**HOT AND COLD WATER
AND ELECTRIC FIRES
I N B E D R O O M S**

LOCK-UP GARAGES

FULLY LICENSED

Telephone: ROCK FERRY 125

TOURNEY WAS GREAT SUCCESS

MY main topic this month is the South Region tournament and I am again indebted to the Cheshire Lines for their co-operation and the use of their club, to Mr. Fred Farrell and Mrs. I Sturgeon who acted as referees, and to all those who helped in the work beforehand.

My thanks also go to Reg Gray and the Anfield club for the loan of a table, which was, incidentally, used for the finals as a "neutral" table.

I would also like to thank all those who umpired and stress, as did Mr. Bill Stamp at the finals, the need for umpires. Surely it is not too much to expect players to give their services at least once during the night.

RECORD ENTRY

The tournament was once again a great success. There were 64 entries for the men's singles and 26 for the women's singles, as well as for the men's, women's and mixed doubles.

It was arranged to hold the men's singles and doubles on the Wednesday night and the other events on the Thursday night, with the finals on the Friday, but owing to the record entry in the men's singles they had to be continued on the Thursday. They did not affect the women's games, however, since entries here were not as numerous.

In the women's singles Mrs. Palmer (Linnet), last year's winner, was beaten in a stern tussle by Mrs. M. Hadden (Aigburth) in the semi-final, while last year's runner-up, Miss D. Alcock, went out in the quarter-final to Miss A. Richards (Linnet), who, in turn, was beaten by Miss M. Green (C.L.C.) in the semi-final.

Three of the four semi-finalists in the men's singles came from Linnet and the fourth from Victoria Park, but when Gerry McSorley beat H. Arden (Victoria Park) 21—13, 21—15 it meant an all-Linnet final. J. Green beat his clubmate P. Short 21—16, 17—21, 26—24 in the other semi-final—a game which might easily have gone the other way.

Green had fallen the previous night and pulled a muscle and was obviously in pain when he played the final which McSorley took easily at 21—13, 21—5.

Mrs. Hadden won the women's singles by beating Miss Green 21—17, 21—10 while the men's doubles went to H. Arden and L. Hunter (Victoria Park), who beat K. Oliver and J. McLachlan (Technical Students) 21—16, 21—13.

The women's and mixed doubles were both thrilling games. Mrs. Hadden and Miss June Preston (Lucem) beat Mrs. D. Hules and Miss M. Green (C.L.C.) 21—13, 14—21, 22—20 in the form 1, while in the mixed two more Cheshire Lines players were beaten, R. Potter and Miss A. Keighley losing to A. Silver (Livex) and Miss A. Richards (Linnet) 21—23, 22—20, 18—21.

The prizes were distributed by our League secretary, Mr. Stamp, who was accompanied by many members of the Management Committee.

Secretary Replies

Sir :—I was interested to read in the January issue, Mr. Irwin's letter headed "small attendances" and would point out that weekly articles have for many years appeared in the 'Evening Express' on Tuesday and the "Football Echo" on Saturday. During the past three months there has been a regular feature in the "Echo" Sports Magazine on Saturday morning.

Surely this answers his suggestion—"If they appeared in the Press regularly."

The "Digest" circulates among nearly 1,300 registered players, and its main purpose is to keep them informed of *all* that is happening in local table tennis circles. I cannot find any evidence to suggest that anything has been (to quote his own words) "Plastered" all over the pages of our Magazine.—

W. STAMP.

HISTORY-MAKING LITHERLAND

LITHERLAND who made their first appearance in our League this season appear to be well set for making history by winning the Region Championship in their initial effort.

A. C. Taylor, their No. 1, is still undefeated at the end of 15 league matches. I can only remember one player going through the season undefeated at No. 1 and that was Richardson of S.S. Peter and Paul's about 1937-38.

Burlington, last year's champions, won the league with the following record:—P.18, W.17, L.1, D.0. For 134, Agst. 46, Pts. 34. Litherland's record to date is P.15, W.14, L.1, D.0, For 129, Agst. 31, Pts. 30.

Few clubs can equal this performance in their first season and I cannot see any of our teams taking even one point from them.

THE OPPOSITE

At the bottom of the table Lofters "A" seem likely to set up a new low record. It should, however, be known that the team has regularly played two or three women who could not get into the women's divisions. That they have met their obligations and never been a player short is indeed very creditable.

The second half of the season has been remarkable for the teams in the lower half of the table. They have won more points than in the period before Christmas. Littlewood's have slowly and surely won their way from the bottom three to the halfway mark Waterloo Park and Catholic Metro have also registered worthy if unexpected victories.

The latter's popularity is for ever increasing and Secretary Miss O'Brien and Captain Bunny Altridge have shewn fine examples of enthusiasm and a sporting spirit second to none. All clubs have welcomed the opportunity of helping them until such times they get a new headquarters.

The league's mystery team is Burlington who, rich in talent, have unaccountably lost to apparently weaker sides.

The North Region tournament which, as I write, is in the course of playing, attracted a splendid entry. There were 50 entries in the open singles; 38 for players who had never played higher than No. 3; 28 in the men's doubles; 30 in the women's singles and 21 in the mixed doubles.

In the open singles the odds-on favourite, A. C. Taylor, was knocked out by his clubmate Len Guy. The semi-finalists are A. Byrne (Waterloo Dock), L. Guy (Litherland), J. Cantwell (Brenka) and W. Askew (Lofters).

The saying that many hands make light work is true in the Region and help from those players who have gone to higher divisions is most gratefully recorded. I refer to Murner Morison, of Burlington, Alf Webster and Charlie Dunne, of Waterloo Dock; Jack Lambert, of English Electric; and all my friends of Linacre.

C.B.C. Catering Services LTD.

*Wedding
Receptions
Dances Dinners
and Fetes*

OFFICIAL CATERERS TO THE
WEST REGION TOURNAMENT

14 Bebington Rd. B'head
Rock Ferry 4290 Upton 3437

Our Ladies' Top Division

ONCE again we have had a fairly quiet month in contacts with the outer world. With the Lancashire League fixtures running to a close, it has to be reported that the men's teams are just keeping their heads above water, but, and say it loud, the women's team lead their division by a point.

The A team once again fell victims to Manchester in their latest encounter at Cosco. Ted Rumjahn notched two sets and Roy Jones one, the fourth being claimed because the visitors had to leave to catch their train.

Manchester again pulled another player out of the bag in C. Parry, who, although comparatively unknown, won his three sets comfortably.

DATES CLASHED

In the B team games several players have been tried with varying degrees of success. A comfortable victory of 7-3 was recorded against Ellesmere Port B, the set winners being Gaulton (3) and Rimmer and Rowan two each.

February 9 proved a difficult day for the Stockport match, due to it clashing with the North Wales Open. Most of the noted players seemed to have entered the tournament so that the team was eventually made up of P. Morley, G. Williams and A. C. Taylor. Stockport won 7-3 and our set winners were Morley two and Taylor one.

The selection of Taylor proved interesting. So far he has only played for Litherland in the North Region and too much could not be expected from him, but it was pleasing to note that he faced the test and was able to record a win. Good show, young 'un.

In the match against Bury, Miss L. Rimmer made her representative debut and after a hesitant start won two of her three sets. With Andre Jones and Kay May winning all their sets, the final score was 9-1.

Results :—Liverpool A 4, Manchester A 6 ; Liverpool B 7, Ellesmere Port B 3 ; Stockport 7, Liverpool B 3 ; Liverpool Women 9, Bury Women 1.

Forthcoming matches :—Feb. 23, Macclesfield v. Liverpool A. Feb. 29, Liverpool B v. Ellesmere Port A, at Waterloo Dock.

League Tables

Division 1.

	P.	W.	L.	D.	F.	A.	P.
Bolton "A".....	7	6	0	1	53	17	13
Manchester "A".....	8	6	1	1	59	21	13
Liverpool "A".....	8	4	4	0	40	40	8
Manchester "B".....	6	3	3	0	30	30	6
Wigan	7	1	5	1	17	53	3
Macclesfield.....	8	0	7	1	21	59	1

Division 2.

Chester	6	4	1	1	40	20	9
Ellesmere P. 'A'.....	5	4	1	0	32	18	8
Liverpool "B".....	7	3	3	1	37	33	7
Ellesmere P. 'A'.....	5	4	1	0	32	18	8
Liverpool "B".....	7	3	3	1	37	33	7
Stockport	5	3	2	0	29	21	6
Ellesmere P. 'B'.....	7	0	7	0	12	58	0

Women.

Liverpool	5	4	0	1	33	17	9
Manchester	5	3	1	1	35	15	7
Blackpool.....	5	1	2	2	24	26	4
Bury	5	0	5	0	8	42	0

Whitty's

for

TABLE TENNIS

15 BASNETT STREET
LIVERPOOL 1

ROYal 3011

LIMIT CLUBS TO TWO TEAMS

J. Rimmer (Homecraft) writes:—

MAY I make a brief comment on the question of large clubs.

I think that the only limitation I would place on the existing system would be to permit only two teams to be entered by each club, excluding women's and youths.

Two teams provide sufficient incentive to form a club of reasonable size. Most clubs experience difficulty, owing to limited membership, in maintaining two teams throughout the season.

The effect on large clubs would be to raise the standard of play in an endeavour to gain a place in one of the two teams, and to encourage the surplus players to help to build up the ranks of surrounding small clubs.

K. Gaulton (Balfour) says:—

REGARDING the January editorial comment, what is the good of a keen table tennis player joining one of the smaller clubs, most of which appear to be social clubs first and table tennis clubs second. The playing conditions are not always of the best and the members do not appear to be as keen as they might be. As soon as the word practice is mentioned out come the excuses. For any keen player to join such a club means good-bye to any hopes of improving his game.

As regards most of the better players joining one or two of

the leading clubs, this is an exaggeration. What has happened is that keen players of poor standard have joined and become reasonable players through practising during the summer months.

Walter Gale

(ex-Domestic Mission) writes:—

THE editorial comment of January brings to issue the vexed question of whether table tennis is an activity to be (a) wholly enjoyed as a pastime or (b) pursued with a grim determination collectively or individually superior to one's fellows.

Perhaps over the past 25 years (a) has been superseded by (b), but in fairness to some if not all pre-war players, the enjoyment of the game has been the main factor, with skill developing from their ingenuity and friendly rivalry.

Post-war development seems to be on the lines of (b) and while it may be commendable for the "progress" of the game, I consider that the encouragement by certain clubs to mass membership will ultimately defeat its object by eliminating the sociability and inter-club rivalry, with a subsequent decline in skill.

My suggestion to overcome this negative aspect is that each club be limited to two teams in the major divisions and two teams in the regional, or junior, divisions and one team in the women's division. The regional, or junior teams, should be confined to players up to the age of 18.

These are your Letters

Now, Umpires!

SIR :—During the England v. Wales match at the Philharmonic Hall it was interesting to observe to what extent the service rules were enforced, or, more correctly, not enforced.

My attention first became riveted on one of the English players, whose every service constituted so flagrant a breach of the rules that I found myself fascinated by it.

My curiosity aroused I watched the service of the other players and found that at times all but Misses Rowe were guilty either of cupping the hand or of releasing the ball in a place far removed from the vertical.

It is interesting to speculate what would have been the reactions of (a) officials, (b) players and (c) spectators if any of the four gentlemen who unpassed had enforced the penalty. After all the fuss about service in the Digest this season I kept hoping for strong action, but evidently it was too much to expect of these gentlemen that they should exert their authority in such august company. What a pity that just one of them didn't!
J. E. EVANS (Port Sunlight).

A Complaint

SIR :—May I protest strongly against the January edition of the Digest. The information desired by most individuals was missing, namely league tables, cup results and cup draws, and what is even more of a loss the results can only be obtained, and then incompletely, in the Liverpool Echo.

If the Digest is to get outside subscribers it must give the facts unobtainable elsewhere. It is no excuse saying space is not available as nine pages, in full or in part, are devoted to advertisements which should be extra to the basic and essential matter we require.—C. W. MANNING (Victoria Park).

Help Wanted

SIR.—It is the unanimous view of our club that league tables are the most necessary part of the magazine and should be the last to be deleted.

I believe most clubs would like to see the re-introduction of the divisional cup competition (First Division barred) which was such a success last season but for no reason was abandoned.

Finally may I through the Digest ask if anyone has had experience of re-surfacing a table. We would like to do ours but dare not risk failure. If anyone has professional knowledge, preferably backed by experience, we would appreciate their advice.
E. CAMERON (Victoria Park).

EDITORS' NOTE :—*We are afraid Mr. Manning does not realise that advertisements are vital to the Digest, unless, of course, he is prepared to pay double for it. As for cup draws, in many cases the games would be played when the draw is published owing to time lag. As for results, cup and league, quite frankly we have considered the point but discarded it because it would take at least four pages each month to give them all. Mr. Cameron your points has been noted for future reference and discussion.*