

NOVEMBER, 1953

L



Vol. IV. No. 1.

PRICE 6^d.

TABLE
TENNIS
DIGEST

Official Magazine

OF THE

WORLD & P.S. ACT 77 TENNIS

Table Tennis

All correspondence
must be addressed to
The Editor "Table
Tennis Digest," 9
Podium Rd. L'pool 13

Digest

Published on the third
Thursday of each month
from October to March.
Subscription for season
3s.9d. post free.

EDITORIAL BOARD:

Joint Editors: J. D. Pattison and J. D. Loughrey
D. M. Foulls W. Stamp A. Montgomery

COMMENT

IT is somewhat disturbing to note that even at this early stage of the season, an increasing number of teams are turning up to matches short of players. Closer scrutiny suggests there are two main causes—first, the claims of night school are clashing with match nights, and second, which follows from the first, clubs have been far too sanguine at the number of sides they may safely enter.

Unfortunate as it may be there can be no question that night school must always have absolute priority, no matter how much confusion and disruption it may cause to a club, and accepting this as a basic fact it remains to be decided just what is the best answer.

We feel in the light of this experience, the League has been perhaps a trifle too willing to accept clubs and teams, in an effort to avoid refusing any application, and as a result has found, for this season at any rate, great difficulty in making up a full complement for every division.

The number of registrations required for teams seems to require fuller examination, for in view of what is happening there certainly seems to be serious grounds for doubting if the present number necessary is sufficient.

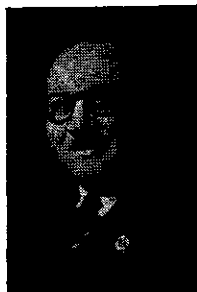
Another point is arising in connection with night school. This is the matter of late arrivals, several teams being unable to field a full side unless late arrivals are permitted.

In such cases it is incumbent on the club concerned to obtain permission *before* the day of the match, not as a matter of courtesy only but also to discover if, by the kindness of the opposing club, such permission can be obtained. There can be no question of bad sportsmanship if such permission is refused let it be noted. The rules are clearly stated, and it involves many factors, among them the forfeiting of the right of nomination of sets. As an intermediate measure, however, it may serve to ease the problem for this season, unsatisfactory as it may well be.

With National Service and night school, table tennis, like many other sports, faces serious difficulties in its efforts to maintain its standards, but it is necessary to understand clearly that it must take its place behind these other more important issues.

ENGLAND'S YOUNG NEW STAR TO PLAY IN "MERSEYSIDE"

By W. STAMP.



WE commence our 28th season with the addition of eight clubs who were not with us last season. Dennis, Liverpool Co-operative Society and Stanley House are newcomers to the League, but Brownmoor Park, Deaf Institute, Dunlops, Edwardians and Fairlawn are old friends returning to the fold.

To all of them we extend a cordial welcome and hope their association with us will be a long and happy one.

The 17th Merseyside Open commences next Wednesday evening and we are again fortunate to have the Drill Hall in Mather Avenue for the Preliminary Rounds until 6 p.m. on Saturday, after which the finals will be played at Picton Hall, the scene of many exciting matches until the outbreak of War in 1939.

Smaller Hall

The entry includes ex-world champion Johnny Leach, Aubrey Simons, Ken Craigie, Brian Kennedy, Ron Allcock, Ron Baker, Ken Stanley, together with Helen Elliot, Kath Best, Ann Haydon, and Betty Gray from Swansea, the holder of the women's singles title will lead the Welsh contingent.

Further particulars about these players will be found on the centre pages, together with the programme in which you will be

able to take down the scores to keep as a permanent record. Don't forget to bring it with you, but if you should forget—there will be some on sale at Picton Hall.

I would remind you again that the seating capacity of the Picton is only one-third that of the Philharmonic, and to avoid disappointment I would recommend you to obtain your ticket from Jack Sharp's, Rushworth's, or through your club secretary who has been supplied with a card for block booking for members who find it inconvenient to get to the agencies in the city.

The closing date for entries in the Maxwell Fyfe and D. M. Foulis singles competitions is Monday next, November 23, so don't delay any longer. The fee is only 1/6. They are handicap events so all stand a chance.

The arrangements are as last year, to cut down travelling by playing the earlier rounds at convenient centres, and competitors will be allocated in groups according to the geographical location of their own club. There will be no clashing with League matches as the competitions will be spread over the weeks commencing December 21 and 28, which have been kept free for this purpose.

Continued on page 6

G. H. LEE & Co.

Sports Department

for All

TABLE TENNIS EQUIPMENT

BATS BY BARNA, BERGMAN BEREGI, CASOFSKY, FRANKS CARRINGTON, HAYDON LEACH, ROWE, ETC.	POSTS, NETS, BAT COVERS SCORE PADS. VILLA, BARNA HALEX AND METEOR BALLS CLUB MATCH & TOURNAMENT TABLES AND TOPS IN STOCK
---	--

RO Yal 7070

G. H. LEE & Co.

Basnett St. LIVERPOOL 1

Secretaries Note

Vacancies in the regions have been filled as follows:—

East Region

Fixtures A, taken over by L.P.A.S. B; match night Monday; other details as per handbook.

Central Region 1

Lucem B fixtures, taken over by Post and Echo; match night Tuesday; headquarters, Daily Post and Echo offices, Victoria Street; secretary, Mr. A. J. Duffy, 96 Brodie Avenue, L'pool 18; Tel. (Bus.) Cen. 8400 (maintenance dept.).

Central Region 2

Fixtures A, taken over by C.L.C. C; match night Monday; other details as per handbook.

North Region 2

Fixtures A, taken over by Waterloo Park C; match night Wednesday.

Fixtures Change

The following fixtures substitute those for the South and East Regions on pages 62 and 63 in the handbook.

December 14

South Region

Aigburth	v.	D. Jission A
Beauchair	v.	Aigburth Mechs.
Cadwa B	v.	Linnet A
C.L.C. A	v.	St. Peter's
Dunlop	v.	Dennis
Linnets C	v.	Wavertree B

East Region

Balfour D	v.	Vagabonds
Cadwa C	v.	St. Dominic's
Fairlawn	v.	Wavertree Lab.
L.P.A.S. A	v.	Edwardians
Leyfield	v.	Cadwa A
Osterley A	v.	A

Playing Conditions Praised

THIS season we welcome to the first division Liverpool Y.M.C.A. and Anfield A, while Balfour B, who would have gone into the second division along with Bohemians, were reprieved by the resignation of Acacia.

In welcoming the Y.M.C.A. we see that Bill Pierce has strengthened a team which I'm sure would have given a good account of themselves as they did so convincingly in the second division.

Adversely African Oil have suffered a grievous blow to their playing strength in losing Pierce, Varty and Moore, the latter two to Domestic Mission. I cannot see John Coveney preventing his team from sliding into the second division.

Another notable signing is Roy Jones by Balfour B, which is bound to help them in the scourge they faced at the end of last season.

Looking Ahead

With the present composition of teams I think most people could already forecast the first and last four places in the final positions.

During the close season one or two clubs have concentrated on improving playing conditions, while several individuals have improved their game by concentrating on their weaker shots and obtaining a lot of practice to improve their match play by several points.

I must congratulate all clubs in the division on having excellent playing conditions. With the Y.M.C.A. buying a new table and improving their lighting and Livex also acquiring a new table,

our conditions are worthy of any first division in the country.

The fact that seven out of twelve teams in our division are from three clubs, has led to some discussion among players and officials. Why has this position occurred? There are several explanations. Among them:—

(1) There is no rule in our constitution causing us to play our strongest five in the first team.

(2) Players are attracted to a club by its playing facilities, its opportunities to improve and by a reasonable subscription. Clubs with a stiff subscription find members hard to get.

The present anomalous position of Balfour A and Rafter's A leading the division shows this peculiarity. Instead of the second best pair playing three and four in the first team, they are playing one and two in the second team; the best playing in the third team and the strongest remaining in the club filling positions 3, 4 and 5 in each side, the procedure helping to keep the other teams well up in the division.

One can argue whether this is good or bad, but it does keep an interest in the championship which otherwise might be a foregone conclusion. But it does prevent other clubs playing first division table tennis.

From the club point of view it is a domestic problem. This monopoly of teams in one division has not occurred wilfully by clubs splitting their teams. It has been the individual's choice to play one or two in a lower team rather than three or four in the first team.

The Sports Specialist

TABLE TENNIS EQUIPMENT A SPECIALITY
Championship Tables, Bats, Balls, Nets, Shoes and Clothing.
All makes of named Bats and Tables supplied.

JACK SHARP

LIMITED

Telephone:

ROYAL 4793/4

VISIT OUR SHOWROOMS . . .

36-38 Whitechapel : LIVERPOOL 1

Promise of Hard Matches

WHAT a "dog-fight" this division is.

If you are under strength any night, look out for trouble. Any one of seven teams can win the division and no one team can be certain of victory over another.

Looking at the bottom of the table first, for a change, Balfour C, with Ken Harold No. 1; Waterloo Dock and Wavertree C.C. are the struggling teams. The latter has still to gain a point, but they'll fight hard regardless.

Hard matches seem to be the order; so take it seriously or you've had it.

Taylor Stands Alone

Of the new teams, Litherland, Bohemians and Linnets are all doing well, and in that order they top the division, with Arthur Taylor (Litherland) the only unbeaten player. I would like to see his match with G. Gower (Cheshire Lines No. 1), whose style of pushing seems to annoy everyone but himself, although my impression is that Taylor will still be winning after he has played them all.

Now for a few team changes in the line-up this season. Victoria Park's new signing, for instance—M. Trueman, only young but very good I hear. Incidentally, George Williams seems to be the only survivor of last season's team.

Cheshire Lines have Gower and R. Palmer (ex-St. Michael's) and Linnets have young M. Travis promoted from their A team and playing well, as well as A. Topping (ex-Aigburth Methodist) and S. Wooding, a Bibby's player of three years back.

My own club, Lucem, have Jim Charnock (ex-Anfield) at No. 2, so we have loads of talent, but no team is strong enough to say "we can beat the lot." Thank goodness for that because we can have more fun this way.

Take, for instance, Oakhill A, with J. Grant, E. Wall, M. Hamill, and two new players in C. Smith and J. Dible. Now they're tying seventh with five points out of ten, yet when top-of-the-division Litherland came along they were lucky to draw. Smith (Oakhill) and Taylor (Litherland) were the only players to win two sets. Oakhill will improve—watch them they may be your bogey team.

Rafters B need watching because they change their players so often. Don't judge them by their lowly position but by the line-up that beat Balfour C 9-1 at home, namely W. Lamb, P. Short (signed from Linnets this season). R. McMullen, D. Ridgway and Mrs. L. Rumjahn.

Now I come to the bitter bit, Linnets (Jim Green's boys). All I can say is that they're good from one to five, but he told me they were the best in the division, and Lucem beat them 6-4. What then does that make Lucem, with J. Rimmer, J. Charnock, D. Foulis, K. Boden and W. Shepherd? They can more than hold their own and beat Bohemians 7-3 who, since that defeat in the opening match, have not lost and in the Stamp Cup their trio, Skipper K. Jones, R. Keddie and J. Houldsworth beat Linnets S. Wooding, L. Mason and F. Thomas 6-3. At one time, I believe, the score was 3-1 for Linnets.

W. Allanson (Boctle Y.M.C.A. No. 1) deserves a mention. He is young, has confidence, plenty of good shots, and in the game at Cheshire Lines beat Gower, only once beaten, 21-12, 21-17. A fine performance.

From the Secretary's Desk—Contd.

Names Cards

The names cards competition concludes on November 30 and I hope that every member has sold at least One card, which is not asking too much. May I remind secretaries that it is Not necessary to return the used cards. If you have had 20 cards and sold 18, you send me £4.10.0 and two unused cards, together with the name of your member who has sold the most number of cards if he is competing for the individual prize of a table tennis bat and 1 doz. Villa XXX balls, while the club who sells the most cards in proportion to their registered player strenght receives five gns.

STANDARD NOT IMPRESSIVE

FIRST impressions of a new season in the third division is that we are a poor lot. Any of last season's top five teams, as constituted then, would have had no difficulty in securing promotion competing in the present division.

The strength of a team lies in its solidarity down to No. 5 and withholding judgment on Liverpool Y.M.C.A., whom I have not seen, we do not appear to have a good team among us. We are not quite as dress conscious either. More and more collars, ties and fancy waistcoats than ever are on view.

Naming the promotion candidates is not going to be easy, but present indications are that the Y.M.C.A. with its ever-growing wealth of talent will make the grade.

At the other end, Linacre are threatening to go one worse than last season, but one could almost draw from the hat for the supporting promotion and relegation places.

Chatting with perhaps the leading personality of our division, Basil Townsend, of O.terley, who last season represented the city while with Balfour, I confirmed the views previously expressed that division 3 teams do not take the game as seriously as their seniors. A defeat is not a catastrophe to be covered by an inquest but we probably get more enjoyment out of the game than our betters although we lack ambition.

Looking at the ages of some of our division's leading lights, the latter is not surprising.

Last season's end I groused about a 10-0 walk-over which affected the relegation issue. This season I am complaining again against a 10-0 walk-over I.C.I. gave Cadwa which again may affect an ultimate issue.

Apparently I.C.I. appealed against the league's decision in relegating them and did not play their first game as their case was at the time unheard. Surely an understanding was possible, even if it meant postponing the game a week or so.

I think the league should have given a lead here rather than allow a walk-over

which is so undesirable and unsatisfactory to both sides.

Several of our clubs including my own, are on austerity refreshments from now on, tea and biscuits replace the miniature luncheons. So far no one seems unduly upset by the "meagre" fare and the idea once started by the few is likely to gain favour.

GUARANTEE FUND

A number of clubs have not yet forwarded their £1 towards the World Championships Guarantee Fund to Mr. W. Stamp, organising secretary of the League. Will those who have not yet done so, please send the £1 immediately.

The system of arrows which Panto have installed in their premises is proving a great assistance to visitors who otherwise might spend the evening wandering round multifarious passages without hope of finding the clubroom.

for Table Tennis

BUKTA T.T. SHIRTS

IN ALL SHADES

Shoes, Singlets and Clothing

BATS

Including BARNIA, JOHNNY LEACH
JACK CARRINGTON, HELEN ELLIOT
PEGGY FRANKS, HAYDON and many
OTHERS

All Makes of BALLS

including

BARNIA, HALEX, VILLA, METEOR

BAT COVERS

Table Nets and Equipment

PHONE ROYAL 3011

WHITTY'S

COMPLETE SPORTS OUTFITTERS

15 BASNETT ST., LIVERPOOL 1

CHAMPIONSHIP VERY OPEN

WELCOME to Dunlops who are the only newcomers this season. Although there have been one or two transfers there are not many changes in teams from last season, and the cry from several clubs has been the shortage of women players.

It is unfortunate that newly-promoted Brenka are one of the worst hit in this respect and are naturally feeling rather out of their depth. Their companions, Linnets A, must also be feeling the loss of several of their club's strongest players and finding the odds against them rather overwhelming, but they have a better opportunity of gaining strength as the season progresses.

A new-look Beauclair will undoubtedly be hot favourites for promotion next season as several of their members are already seasoned first division players. Their second team is a new venture and is made up mostly of new recruits whose enthusiasm and eagerness to learn is at the moment making up for their lack of playing ability.

Healthy Competition

Until Lofters hit the headlines and won the championship at their first attempt last season, it was for many years always a safe bet that either Balfour or Rafter's would win the medals. Judging from results so far this season I think the result is going to be very open, which is all to the good as healthy competition is the lifeblood of any sports organisation.

Anfield started the season well by forcing Lofters and Bibby's, last seasons' cup winners, to a draw, and I. Howley and R. Boyle already have good victories to their credit. M. Bannister and M. Perry have taken over the leading positions for Bibby's and it is good to see that D. Ball, who showed good promise two or three seasons back, has returned to the side.

I am sure Bohemians will be all out to keep at the head of the table, having started the season well by a sound victory over Balfour. Their fighting spirit was never better displayed than when they played Lofters and, losing 2-5, never relaxed their efforts and concentration to worthily win the three remaining sets and rob their hosts of a victory.

M. Jones dealt Lofters an opening blow by beating J. Lloyd, thus avenging her defeat last season in the semi-final of the women's regional singles. W. Finnetty, who gave yeomen service as reserve did much to boost Lofters' morale when she ably accounted for C. Gleed 21-15 in the third, and later beat S. Farrell 21-19, 21-18, to make the score in favour of Lofters 4-2. S. Farrell having already contributed the second set for Bohs by beating M. Griffiths after a grand tussle 16-21, 21-13, 21-16.

The match that had been looked forward to with interest between B. Waterson and M. Jones lived up to expectancy and provided many fine rallies and a high standard of play throughout before Beryl gave her club a comfortable lead of 5/2 by winning 17-21, 21-15, 21-14.

With the stage all set for victory, however, J. Lloyd gave herself and team-mates a second unpleasant shock by losing to C. Gleed 14-21, 21-15, 17-21, thus recording her first double defeat in any match.

The victory gave the Bohs a tighter grip on the situation which was never more exciting than when the two captains, N. Lamb and M. Alcock, fought a long grim duel for supremacy, each playing for openings and seizing every opportunity to score a point. Nan won the first game 21 16, only to lose the next 21 12 and 16. Well played M. Alcock, who can certainly extend many of the younger players and beat them.

Lofters' hopes of victory in the last crucial set rose when M. Griffiths won the first game against D. Mezey, only to be dashed as the next two games went to the Bohs 11 and 18.

Their Bogy

Lofters will soon be considering Rafter's their bogy as they suffered their first defeat in 25 league matches against them and it was Rafter's who put them out of the Bartholomew Cup last season.

Kindly note I shall welcome and appreciate any club news or match reports from secretaries and captains.

Sees Y.M.C.A. Beat Rafter's

IF Ken Hyde reads this will he kindly root out his old drop shot and send it along to the Liverpool Y.M.C.A. where Rigby is badly in need of one.

This young player has a fine forehand, if it is rather telegraphed by a long back swing, but this stroke is not enough.

In the match against Rafter's, Linforth exposed a weakness in defence, particularly down the forehand side due to slow footwork and bad positioning. Rigby tends to stand too far to one side of the table and thus leave his forehand corner open.

Against Crooke the lack of a drop shot was most marked, but if the Y.M. player had remembered that points at the start of a game count so much as those at the end, he might have won. In the third game he threw away the first four points through carelessness and Crooke saw to it that he never got them back.

Deceptive

Still, with the better opposition he is now meeting I look forward to these weaknesses being rectified and this very promising young player fulfilling all our hopes.

Young Exell is still a defensive player, but if he does want to use a forehand drive he should not do so against topspin lobs. These easy looking balls should be treated with great respect and not slashed at.

Morison had a tough night, with both his games going to deuce in the third. He was on the right side against Exell but lost to Bradshaw, the squeaks coming from his shoes seeming to spoil his concentration in the latter game.

Bradshaw contributed in no small way to the Y.M. victory of 6-4, for playing at No. 5 he was undefeated. He is the type of player that does not win points—only games, a useful attribute at No. 5.

His other victim was Eric Caird, who continues with full sound effects but now seems to favour most a deep growl which made me think that if the M.G.M. want to replace Leo the Lion in their pictures, then Caird is admirably fitted to take its place.

Mandeluff did well, and in beating Caird and Linforth proved he is at home in division 1. Against Linforth he looked well beaten in the first game, but fought back to take the second 23-21 and the third 21-17. His backhand flick will not be found in any text book, but is no less effective for that. A hard man to beat at No. 4.

Missed Opportunity

Bill Pierce had little trouble in dealing with Peter Rumjahn and Crooke two straight, his hitting being much too crisp for them. Peter managed to win the last set of the night against Exell, but as the match was won and the time nearly eleven o'clock both just had a bash. A pity, for it was a chance for Exell to get experience.

Peter came off to find that all but he of Rafter's had fled, but this did not prevent him from spontaneously congratulating the victors and thanking them for a good game. What a fine example of good sportsmen the "Rummies" have always been.

The match, which was full of interest, showed this Y.M.C.A. side as one of distinct possibilities, strengthened as they are by Bill Pierce. They will make their presence felt in division 1, but now that they are in that exalted sphere I would draw their attention to the last sentence of Rule 19, particularly the last couple of lines.

LEAGUE TABLES

First Division

	P.	W.	L.	D.	F.	A.	P.
Rafters A	6	6	0	0	46	14	12
Balfour A	6	5	0	1	42	18	11
Balfour B	6	4	1	1	33	27	9
L'pool Y.M.	6	3	2	1	37	23	7
Balfour	6	3	3	0	36	24	6
Oakhill	6	3	3	0	35	25	6
15th Crosby	6	2	2	2	33	27	6
Rafters	6	2	3	1	30	30	5
Anfield	6	2	3	1	28	32	5
Livex	6	1	4	1	22	38	3
Anfield A	6	1	5	0	13	47	2
African Oil	6	0	6	0	5	55	0

Second Division

	P.	W.	L.	D.	F.	A.	P.
Litherland	6	5	0	1	39	21	11
Linnetts	6	5	1	0	39	21	10
Lucern	6	4	1	1	35	25	9
Bohemians	6	4	2	0	36	24	8
Victoria Park	6	3	2	1	37	23	7
Oakhill A	6	3	2	1	29	31	7
Cheshire Lines	5	1	1	3	26	24	5
Balfour C	6	2	4	0	22	38	4
Bootle Y.M.C.A.	6	1	4	1	25	35	3
Rafters B	6	1	4	1	25	35	3
Waterloo Dock	6	1	4	1	23	37	3
Wavertree C.C.	5	0	5	0	14	36	0

Third Division

	P.	W.	L.	D.	F.	A.	P.
L'pool Y.M. A	6	5	0	1	45	15	11
Bath Street	6	4	1	1	39	21	9
Cadwa	6	4	1	1	39	21	9
Osterley	6	4	1	1	39	21	9
English Electric	6	4	1	1	34	26	9
L.P.A.S.	6	3	2	1	32	28	7
Anfield B	6	3	2	1	31	29	7
Victoria Park A	6	1	3	2	29	31	4
I.C.I.	6	1	4	1	22	38	3
Tech. Students	6	1	4	1	16	44	3
Bohemians A	6	0	5	1	21	39	1
Linacre	6	0	6	0	13	47	0

Fourth Division

	P.	W.	L.	D.	F.	A.	P.
Panto	6	6	0	0	49	11	12
Domestic Mission	6	4	1	1	35	25	9
Bootle Y.M. A	5	4	0	1	33	17	9
Lofters	6	3	1	2	33	27	8
Oakhill B	6	3	2	1	35	25	7
Waterloo Park	6	2	3	1	33	27	5
Livex A	6	2	3	1	26	34	5
Wavertree C.C. A	6	2	3	1	25	35	5
Victoria Park B	6	1	3	2	24	36	4
Bohemians B	6	1	5	0	20	40	2
African Oil A	4	0	3	1	11	29	1
Victoria Park C	5	0	4	1	16	34	1

Women's—Division I

	P.	W.	L.	D.	F.	A.	P.
Bohemians	6	5	0	1	49	11	11
Oakhill	6	5	1	0	42	18	10
Linnetts	6	4	2	0	40	20	8
Rafters	5	2	0	3	33	17	7
Littlewoods	6	3	2	1	35	25	7
Lofters	6	2	1	3	31	29	7
Balfour	6	3	2	1	30	30	7
Anfield	5	2	1	2	29	21	6
Bibbys	6	1	3	2	25	35	4
Cheshire Lines	6	0	5	1	15	45	1
Brenka	5	0	5	0	6	44	0
Linnetts A	5	0	5	0	5	45	0

Women's—Division II

	P.	W.	L.	D.	F.	A.	P.
Beauchai	6	5	0	1	47	13	11
Bohemians A	6	4	0	2	45	15	10
Waterloo Park	6	4	0	2	41	19	10
Osterley	6	3	1	2	43	17	8
Aigburth	6	3	2	1	34	26	7
Leyfield	6	2	1	3	31	29	7
Wavertree C.C.	6	3	3	0	35	25	6
Lucern	6	2	3	1	22	38	5
Dunlop	6	2	4	0	23	37	4
Littlewoods A	6	2	4	0	18	42	4
Beauchair A	6	0	6	0	11	49	0
Catholic Metro	6	0	6	0	10	50	0

North Regional I

	P.	W.	L.	D.	F.	A.	P.
Bootle Y.M. B	6	5	1	0	40	20	10
Littlewoods	6	5	1	0	39	21	10
Maghull	6	4	2	0	36	24	8
Litherland A	6	3	1	2	33	27	8
Brenka	6	2	1	3	32	28	7
Everton Y.M.	5	3	1	1	28	22	7
English Elec. A	6	2	3	1	31	29	5
Waterloo Dock A	6	2	4	0	26	34	4
Lofters A	6	2	4	0	24	36	4
Warbreck Moor	5	1	3	1	25	25	3
Waterloo Park A	6	1	4	1	23	37	3
15th Crosby A	6	0	5	1	13	47	1

North Regional II

	P.	W.	L.	D.	F.	A.	P.
Bootle Y.M. C	6	6	0	0	49	11	12
English Electric B	6	5	0	1	42	18	11
Anfield D	6	4	1	1	36	24	9
Bath Street A	6	4	2	0	35	25	8
Litherland B	5	3	1	1	30	20	7
Brownmoor Park	5	2	3	0	26	24	4
English Electric C	6	2	4	0	23	37	4
Co-op	5	1	3	1	21	29	3
Waterloo Park B	5	1	4	0	17	33	2
Maghull A	6	1	5	0	17	43	2
Bootle Police	5	0	5	0	12	38	0
Waterloo Park C	1	0	1	0	2	8	0

LEAGUE TABLES

South Regional

	P.	W.	L.	D.	F.	A.	P.
Cheshire Lines'A	6	6	0	0	53	7	12
Beauclair	6	5	1	0	50	10	10
Linnets A	6	5	1	0	45	15	10
Cadwa B	6	5	1	0	36	24	10
Dennis	6	4	2	0	32	28	8
Aigburth	6	3	3	0	31	29	6
Wavertree C.C. B.	6	2	4	0	26	34	4
Aigburth Meths.	6	2	4	0	25	35	4
Linnets C	6	2	4	0	23	37	4
St. Peters	6	1	5	0	12	48	2
Dunlop	6	0	5	1	16	44	1
Domestic Mission A	6	0	5	1	11	49	1

East Regional

	P.	W.	L.	D.	F.	A.	P.
L.P.A.S. A	6	6	0	0	42	18	12
Balfour D	5	4	1	0	29	21	8
Osterley A	6	3	2	1	36	24	7
Vagabonds	5	3	1	1	35	15	7
Cadwa A	4	3	1	0	23	17	6
Edwardians	5	2	2	1	23	27	5
Wavertree Labour	5	2	3	0	26	24	4
Fairlawn	6	2	4	0	20	40	4
Cadwa C	6	1	4	1	21	39	3
St. Dominics	6	1	5	0	22	38	2
Leyfield	5	0	3	2	19	31	2
L.P.A.S. B	1	0	1	0	4	6	0

Central Regional I

	P.	W.	L.	D.	F.	A.	P.
Liverpool Y.M. B.	6	4	1	1	42	18	9
R.A.F.A. (L.)	5	4	0	1	35	15	9
Old Xaverians	6	3	1	2	34	26	8
Linnets B	6	3	1	2	35	25	8
Anfield C	5	3	1	1	35	15	7
Oakhill C	5	3	1	1	32	18	7
Panto A	5	3	2	0	30	20	6
Lucem A	6	1	4	1	22	38	3
Vagabonds A	5	0	3	2	17	33	2
Daily Post & Echo	1	0	0	1	5	5	1
Catholic Metro	6	0	5	1	12	48	1
Lussac	6	0	5	1	11	49	1

Central Regional II

	P.	W.	L.	D.	F.	A.	P.
R.A.F. Movements	6	6	0	0	52	8	12
Cheshire Lines B	6	4	2	0	38	22	8
Peel Hall	5	2	1	2	26	24	6
Stanley House	5	3	2	0	24	26	6
Florence Oxtou	5	3	2	0	23	27	6
Tech. Students A	6	2	3	1	27	33	5
Oakhill D	6	1	3	2	26	34	4
Livv B	5	1	2	2	21	29	4
Beauclair A	5	2	3	0	20	30	4
Old Xaverians A	5	1	3	1	20	30	3
Deaf Institute	6	0	4	2	23	37	2

Notify Players Earlier Plea

We have received the following letter from Mr. John Taylor, Hon. Secretary of Liverpool Y.M.C.A., on the question of the notification of players when chosen for representative matches:—

Sir.—Is it not possible for the League official concerned to give players chosen for representative matches more than 24 hours notice of their selection.

This was what happened when Bill Pierce was chosen to play at Southport. He received notification on Monday that he was required to play on Tuesday when he was due to play in a club match. His enforced withdrawal left me with just 24 hours to find a reserve to deputise for him.

Apart from the selected players having to make changes in their plans at short notice, a great deal of inconvenience can result for his fellow club members and for the club secretary. I feel that in future players chosen for Liverpool teams should be notified a week before the date of the match.



KEN STANLEY, who is competing next week in the Merseyside Open.

The First Division Problem

By J. D. LOUGHREY

THERE is I feel, a strong tendency for League members to regard our cup and league programmes as being closely allied to that of the Football Association and League, whereas in some respects the resemblance is purely superficial.

This has been forcibly brought home to me by a consideration of the First Division, where, at the time of writing, the A teams of both Rafters and Balfour are both six points ahead of their first teams, and the thought occurs, would it be a good thing or not for the League as a whole if Football League principles were more closely followed ?

With both these clubs a consolidation of the best players into one team would put them in a class of their own, although a Balfour A team in such circumstances would not be far behind.

Distant Prospect

The remaining nine teams would then have fourth place to fight for as the highest possible success to be obtained. Even so the natural advantages enjoyed by Balfour, and the exceptional strength of a club with three Rumjahns on its list, together with a totally admirable enthusiasm possessed by them both, suggests that the day when any aspiring club may be able to wrest honours from them is far distant.

The natural question arises, is it for the good of the League as a whole ?

In the palmy days before the War, the international stars were nearly all assembled into one or two clubs, and it must be obvious that class players need to play among themselves to keep at the top.

To-day, however, things are rather different. The nucleus of Rafters strength is still the three Rumjahns, who were all at the top of the tree a decade ago. Balfour are providing many good players for representative sides, but so far have not brought forward any really outstanding star.

As matters stand there can be no further success to be gained by any ambitious club than a reasonable placing in the first division, as the immense playing strength of these two clubs prevents any further advance.

Whether this is a satisfactory state of affairs is a matter on which views may conflict. Both clubs have split their strength as the present rules permits, which explains the anomaly of A teams being so far ahead of the seniors, but if it were possible for a ranking list rule to be reimposed and carried out efficiently then the curiosity of Ronnie and Ted Rumjahn appearing for an A team, and Roy Jones for a B would surely be eliminated.

The result would inevitably be that the class players would start to circulate around clubs more freely.

Important Factor

The cardinal factor really is whether players or clubs should come first ? Do we want a first division in which the honours will go round more freely, or is it better that competition should be sacrificed so that the better players should be kept together ?

One cannot help thinking with regret, of the lost opportunity of a headquarters for the League, as this might have enabled good players to meet their equals and still be able to benefit struggling clubs with their ability and good advice.

I can't help feeling that if that had been possible our present standard might have not been so disappointing. It is high time Liverpool made a mark in International circles again, all will agree.

These few words may bring forward some views on a subject, which is extremely interesting, and have been written in a spirit of curiosity and general desire for improvement in playing standards and competition generally.

BOOTLE Y.M.C.A.'s PROMISE

IT is very gratifying to hear at intervals from players now playing in higher divisions of their desire to be back in the North Region.

When I inquire why, the answer is that there is an atmosphere of friendship which makes matches a real pleasure and particularly do they miss our regional tournament.

Recently when I asked a No. 1 of a promoted club what had happened to his form, he jocularly remarked: "I'm playing to get into the Region team."

Good Soil

Nothing gives greater satisfaction than evidence which is indisputable. Bootle Y.M.C.A. have demonstrated the fruits of the enterprise and encouragement of their general secretary Mr. Watson. Private coaching, with the facilities of being able to practice every night against many players of varying styles, has produced a wealth of young and highly skilled players.

Both divisions of our region are led by the Y.M.C.A. A and B teams. It is fortunate that there are teams who will challenge their supremacy strongly and we should see a fine struggle waging right to the end of the season.

I see we have an old-timer back in our midst in Jack Longstaffe, of English Electric. Jack Barker, of Lofters, preferred playing in the region rather than division 4 and has taken over the captaincy and is playing with considerable success.

It is significant that there is not a single No. 1 or 2 with a 100 per cent record after five league matches. Longstaffe, Lovelady, Moores and Owen have all suffered defeat.

New names in old teams that have proved outstanding are P. Turtle (Everton Y.M.C.A.), I. Hay and B. Rockcliffe (Brenka), D. Hine (Lofters), G. Every, D. Morton and J. Edwards (Littlewoods).

Emphasising the shortage of women players, I record the fact that in 60 league matches only one woman player has appeared in one match—Nan Lamb of Lofters.

R. Malley (Litherland A) is worthy of mention. He has won all ten sets in

five league games and two in his only cup-tie.

Brownmoor Park, one of the two new clubs in the region, are averaging a point per match which they must regard as satisfactory. Although I have spoken to their secretary I have not as yet been able to visit them. Meanwhile I would appreciate the co-operation promised by their secretary regarding match results.

Liverpool Co-op have not done too well to date but should profit by their experience. I will make their acquaintance in the near future.

Dangerous Side

Anfield D strike me as a dangerous side and finding themselves so favourably placed in the table they may make an all-out bid for honours. Bernard Oxlade, who had been playing with so much success, has been promoted to a team outside our region, but his place has been taken by L. Lewis who, in his first three appearances, has registered six winning sets.

Bootle Police are the only team in both divisions without a single point. I am afraid they lack the fire and enthusiasm of their leader, Frank Williams, and unless some members really approach the table with the serious intention of winning they will continue to languish at rock bottom.

It is interesting to note that of the 50 league matches played only two have resulted in a draw. Players to gain prominence are H. Dean (Bath Street A) and B. Davies (Bootle Y.M.C.A. C), who is equally effective at No. 4 or No. 1. He is the only player to have won ten sets.

Two women players have appeared in this division—Mrs. Dorothy Green-smith and Mrs. Dawn Lewis, both of Anfield.

I wonder if the Management Committee have realised the North Region's contribution to the League by registering additional teams in the last two years—Bath Street (1), English Electric (2), Litherland (2), Maghull (1), Waterloo Park (3)? Congratulations, North Region!

Who'll Stop Cheshire Lines?

I AM going to stick out my neck again by prophesying—my previous efforts in this direction having been more or less correct. This season I cannot see any team likely to beat either Cheshire Lines A and I rather think we will find them at the top at the season's close, with Beauclair second and Linnets A third.

I have not yet seen Cheshire Lines but they pipped Beauclair 6—4 at Dunbabin Road and are confident of a repeat performance later on.

The arrival at Beauclair of Weston and Carter has transformed the team. Playing at 2 and 3, with Porter at No. 1, this leaves old friends Fred Farrell and Jack McKim to form a steady tail. Porter and Weston both young men of ability, but they lack that steadiness which could add points to their game.

You will remember Carter did well in last season's South tournament. Regarding Farrell and McKim, let it suffice to say that their hands have lost no cunning but like so many of us they have made way for the younger players.

Their Best Team

Definitely this is Beauclair's strongest team yet, and, if they don't win promotion it will not be for want of trying.

Linnets C made history at Dennis, when ten year old Tony Green played as a last-minute reserve. Believe me, he gave a good account of himself, particularly in his game against W. Millar. His strong feature was stubborn pushing with unexpected backhand flicks (just like his father) and his opponent could not afford to take it easy.

We shall not see much of him for the next year or two but his debut was very promising, and it looks well for future Linnets' teams when they have youngsters of this age available.

Linnets have also other promising youngsters, such as Don Rodrigues and Brian Pardy, of whom each have only lost a single set this season. Both are only 16.

Don, who is improving weekly, joined Linnets from Liverpool Y.M.C.A. for whom he played in the fourth division last season, but the club take pride in Brian, who was a complete beginner last Christmas, was coached by Peter Rumjahn during the summer under the club's coaching scheme, and who will, I fancy go a long way in the game.

Together with these two are Ken Dutch, George Callaghan and Allan Watson. It is a good side although not as strong as last years undefeated team, but I can see no other team likely to keep them out of third place.

I have seen several teams this season and one thing which has forcibly impressed me is the evident lack of real practice in regional circles. Every year we find one or two outstanding teams, but the majority are nowhere near this standard, and I am convinced that lack of practice makes for regional status.

I have arranged with our good friends Cheshire Lines, to hold the South tournament at Southmead Road on March 3, 4, and 5. There will be the usual six events and we hope to have a seventh event, but plans are not yet completed.

DRINK

MOORHOUSE'S
"YOR COLA"

AFTER A MATCH AND YOU ARE READY FOR ANOTHER

All Enquiries to—

MOORHOUSE BROS., 55 EVERTON ROAD
ANField 3248. LIVERPOOL, 6

A CAP NOT TO WEAR

AS the season is still young I want to write of matters of a general nature rather than to comment on merely four matches.

First, may I extend a welcome to those new clubs and also wish to both new and old a good season's play.

I must also voice my pet grouse in the hope, perhaps, that more club secretaries team captains and individual players will agree with me—try to start early, cut knock-ups and curtail extensive tea parties.

To stress these points I want to tell you of an experience I had when I recently visited a fourth division game and trust the points raised will not occur again, at least not in our region.

No Welcome

The visiting team arrived quite early; I understand that they had all been present some time before my arrival at 7-45. No one of the home team appeared until after eight o'clock, in spite of the visiting captain making inquiries two or three times.

Finally the match began at 8-15. In between each set there was quite a delay while people entered or left the room, due, I believe, to it being used as a general cloak and waiting room.

And so the match dragged on and at about 9-50 the tea break arrived with only six events completed. At 10-20 I left while the seventh set was just going into the third game. I learned subsequently that, due to a terrific spurt, the match was completed at 11 p.m.

During the greater part of the time I was there there was a continuous banging overhead as though a circus was being trained—this, together with groups of people having discussions.

I honestly believe that by efforts on the part of both players and officials of the club much of these bad factors

could be avoided and I ask you all in the East Region to think of them and "if the cap fits" take quick steps to see that it has become too small to be worn.

As I said earlier so few matches have been played that to comment on the league positions would be silly. There is, however, one point I would like to make and that is in regard to Liverpool Police A.

To date they have gained full points from the five matches played and that is only about four short of last season's total. It is good to see this as for the last two seasons duties and shortage of good reserves has been the main handicap against their being in the promotion race.

Get your tickets for the

MERSEYSIDE OPEN FINALS

which is being held at

Pieton Hall, 28th Nov.,

at 7-45 p.m.

from

Jack Sharps
Rushworths

or

The League Secretary,
W. Stamp,
3 Farmdale Close, Liverpool 18.

5/- 3/6 2/6
No Booking Fee

R.A.F.A. Stay May Be Short

WE start the new season with a larger family. The new second division has brought us some new clubs and some old friends.

I would like to welcome the newcomers, namely Florence Oxton, Peel Hall, Stanley House, and the later debutants, Post and Echo who have taken over Lucem B fixtures.

Florence Oxton won their first three matches, then met R.A.F. Movements and went down 10-0; Peel Hall have not been beaten, having won two and drawn two, while Stanley House have won three out of four. They also fell victims to R.A.F. Movements by 8-2, altogether it has been a good start for new clubs.

Extra Effort

Returning to the League are the Deaf Institute, ably led by R. Jones, who has maintained a 100 per cent throughout their first five matches. A little extra effort by the other members of his team might see them picking up a few points. So far they have only managed to gain one, by drawing with Stanley House.

R.A.F. Movements have joined us from the North Region and have already secured more points than they did all last season. Undoubtedly they are the team to watch in the second division. They have only dropped five sets in their first five matches and are doubtless well satisfied with the move.

Technical Students also came from the North, but they need to fight a little harder for those few extra points which often mean the difference between victory and defeat.

Cheshire Lines B joined us from the South and Beauclair A from the East. The latter have only been able to field their full strength once this season and this is no doubt affecting their results. Cychshire Lines are more fortunate. They have a much stronger B team than in previous years.

In the first division we have all our old friends with us, plus R.A.F.A. relegated from the fourth division and they look as though they may well be returning thence next season. So far they have not dropped a point. Liverpool Y.M.C.A. B came nearest to taking a point from them, but Des Loughrey (Y.M.) lost the final set to Lawson 10-21 26-24 21-19 to give R.A.F.A. a 6-4 win.

I expected great things from Anfield C this season. They were very strong at first, their side including Rea and Gee, both of whom played in the first division before their two years lay-off, but they both quickly found their form and have been moved to a higher team.

Some Good Sets

I saw their match with Lucem A and there were some really good sets. Maddocks (Lucem) played well to win his side's only sets against Roberts and Gee.

It was disappointing that Lucem had to withdraw their B team owing to several of their members having to attend night school on Monday evening.

Catholic Metro (finally installed in their own headquarters) seem to be particularly short of male players and have had to call their women to the rescue. Bunny Attridge must be getting used to having three or four women in his team.

The following regular players have maintained their 100 per cent record: Division 1.—E. Handley (Old Xaverian), W. Johnson (Panto A), D. Maher and B. Oxlade (Anfield C) and J. Robinson (R.A.F.A.). Division 2.—J. Anderson C. Briggs and D. Wildblood (R.A.F. Movements), F. Cook (Florence Oxton), T. Faveran (Technical Students) and R. Jones (Deaf Institute).

BANG WENT ROSE BOWL HOPES

OUR ventures this season in the national knock-out competitions have met with mixed results, for while the men's team have jumped two Wilmott Cup hurdles with ease our interest in the Rose Bowl ended with abruptness.

It was unfortunate that our women should draw the strongest team in the area, Manchester, in the first round, and though they fought hard at Manchester they had to submit to a 7-2 defeat. Our successes came with Miss Eileen Mansell beating Mrs. D. Wilkinson and Miss Mansell and Mrs. L. Rumjahn defeating Mrs. Wilkinson and Miss E. Grimstone in the doubles.

In the Wilmott Cup first round the men beat Runcorn (away) 6-2 Bill Pierce winning his three sets Peter Rumjahn two and Bernard Hand one. With Ron Rumjahn in the side for brother Peter they then went on to beat Southport (away) 8-1 our only loss being when Ron Rumjahn went down to Coogan.

Worthy Draw

In league matters we began the season well when our first team, which included N. R. Jones (Balfour) in place of Hand who had to cry off through a leg injury, met Bolton, the league champions, at Bootle Y.M.C.A., and held them to a draw, in a match thought by many to be the best seen at the Y.M.C.A.

The match was a personal triumph for Ron Rumjahn who won his three singles and with Pierce the doubles. Ron defended exceptionally well when driven away from the table by the hard-hitting Bolton team but did not

lose any opportunity for attack whenever possible, and some of his counter-hitting was more like the player of a few years ago when he won his place in the England team.

Pierce also played well, although winning only one set, when he beat A. Smith 2-1, he might have had a better record for several times he obtained a good lead by fine all-round play only to lose it by using too much backhand attack which was very erratic.

Jones played well as reserve but found his opponents just that much too strong for him.

What a different story it was against Manchester at African Oil Mills on November 6. Our team of R. Rumjahn Pierce and E. Rumjahn found G. Pullar, A. Shepherd and J. Clayton on top form and lost 8-1, with one game unplayed. Our sole success was the doubles in which Ron and Ted played well to beat Pullar and Shepherd. The fast Oil Mills table suited the Mancunians' strong attacking play, while Pullar was the star of the match.

Liverpool A have made a good start, with two wins and a draw in the first three matches. The draw came in the first match at Macclesfield when we were represented by the Balfour trio, N. R. Jones, K. Gaulton and H. Wilcock.

Considering that Macclesfield finished next to top in the second division last season, the draw was very satisfactory. Jones (2) and Gaulton and Wilcock one apiece and the doubles via Jones and Gaulton were our successes.

Continued on page 20

This Magazine was Printed by

Henry Matthews
& SONS, LTD.

10-12 Pall Mall, Liverpool 3

FOR HIGH-CLASS
PRINTING
BROCHURES &
PROGRAMMES
A SPECIALITY

SECOND ROUND CUP TIES

The draw for the second rounds of the five cup competitions, to be played before or during the week commencing December 7, are as follows :-

Readman Cup

Rafters A	v.	Balfour
Anfield A	v.	15th Crosby
Bath Street	v.	Lucem
Rafters	v.	C.L.C.
L'pool Y.M.	v.	Oakhill
Anfield	v.	Balfour B
Bootle Y.M.	v.	I.C.I.
Balfour A	v.	Linnets

Bartholomew Cup

Beauclair	v.	Lofters
Waterloo Park	v.	Rafters
Oakhill	v.	Linnets
Anfield	v.	Dunlop
Littlewoods	v.	Osterley
Bohemians A	v.	Littlewoods A
Aigburth	v.	Bibbys
Wavertree C.C.	v.	Bohemians

Stamp Cup

Bohemians	v.	Balfour
Victoria Park	v.	English Electric
Lucem	v.	Liverpool Y.M.
Osterley	v.	Oakhill
Rafters	v.	Waterloo Dock
Beauclair	v.	15th Crosby
Litherland	v.	Anfield
Vagabonds	v.	Livox

Rumjahn Cup

Dom. Mission	v.	L.P.A.S.
L'pool Y.M. A	v.	Anfield B
Cadwa/Osterley	v.	English Electric
Bonemians A	v.	Oakhill B
Victoria Park C	v.	Waterloo Park
Bath Street	v.	Victoria Park B
Wavertree A	v.	Panto
Bootle Y.M. A	v.	I.C.I.

Hyde Cup

Balfour D	v.	Litherland B
Aigburth Meth.	v.	Beauclair
Bootle Y.M. C	v.	C.L.C. A
L.P.A.S. A	v.	C.L.C. B
Old Xaverians	v.	Brenka
Lussac	v.	Edwardians
Dennis	v.	R.A.F. Move.
Dunlop	v.	L'pool Y.M. B
Vagabonds	v.	Oakhill D
Bootle Police	v.	Anfield D
R.A.F.A.	v.	Lofters A
Osterley A	v.	English Electric A
Anfield C	v.	Litherland A
Cadwa A	v.	Linnets B
Bath Street A	v.	W'loo Dock A
Aigburth	v.	Linnets A

Lancashire League—continued.

Taylor's Successes

With V. Chesham, N. Jones and A.C. Taylor as our team, Wirral (Roy Jones, F. Varty and R. Grayson) were beaten 9—1 at Bibby's, this time our loss being the doubles, and with Gaulton substituting for Jones, the team went to St. Helens to gain an 8—2 victory. Taylor played well to win his three sets, while Chesham and Gaulton get two each, both losing to Bull, St. Helens No. 1.

The women's team have only played one league match, when the team comprised Miss Mansell, Mrs. B. Waterson and Mrs. M. Jones and Blackpool were the visitors.

The match, played at Bohemians, ended in a 5—5 draw. Miss Mansell winning her three sets and Mrs. Waterson one. Mrs. Jones, making her debut for the city, played well to win one set and only lost 19—21 in the third to Miss Booth, Blackpool's No. 1. Altogether an encouraging debut.

SUBSCRIBERS

Become a regular Subscriber to the "Digest." Cut this out and send with 3/3 postal order to Mr. W. Stamp, 3 Farmdale Close, Liverpool 18, and future issues will be posted to you.

Name

Address