

DECEMBER, 1955

DD



Vol. VI. No. 2.

PRICE 6<sup>d</sup>.

TABLE  
TENNIS  
DIGEST

*Official Magazine*

OF THE

LIVERPOOL & DISTRICT TABLE TENNIS ASSOCIATION

# Table Tennis Digest

All correspondence  
must be addressed to  
The Editor "Table  
Tennis Digest," 9  
Podium Rd. L'pool 13

Published on the third  
Thursday of each month  
from Nov. to April.  
Subscription for season  
3s. 9d. post free.

EDITORIAL BOARD:

Joint Editors: J. D. Pattison and J. D. Loughrey  
W. Stamp A. Montgomery J. H. C. Hughes

Vol. VI

December, 1955

No. 2

---

## COMMENT

THERE is little reason to question the view that in many ways this is proving to be the quietest season since the war. From the start of the campaign hardly a single controversial matter has come into prominence. This is inevitably reflected in the *Digest*, where there has been hardly any correspondence to enliven its pages, a fact which from the editorial standpoint we very much regret.

Speaking frankly, we are very glad that at the A.G.M., League members had the opportunity to decide the fate of the magazine and indicated, by a big margin, that they wished it to continue. If it had not been fully ventilated we would be having very grave fears as to the success it was having in fulfilling its function as a recorder of the League's activities.

It seems more than likely, however, that the apparent signs of apathy in the League are a further example of a symptom which seems to be very widespread in the sport, and officials of the game must be noting the trends with very little pleasure.

It has been rightly said that the vast majority of players are interested only in their weekly match, with a lesser or greater amount of practice according to their ambitions, and only when their personal interests are involved can they be moved to action. It reflects great credit on the minority that they do support the League in its various functions and are always ready to lend a hand when the occasion arises, but what a pity it is that this band cannot be greatly increased and a little more of the enthusiasm of the early days be recaptured.

A large organisation such as ours, has its own peculiar problems, which did not arise in its early days, and one of these is the difficulty of fostering a spirit that keeps all the clubs in close contact and on a firm basis of friendship. That is something which is somewhat lacking these days. Can it be doubted that the absence of criticism, praise or, indeed, of any opinion at all from our readers, is but a certain proof that there is a great deal in the argument?

A little while ago a player of long standing was heard to say that he had enjoyed the game for many years, felt he had a great deal to repay and would be glad of the opportunity to take on any task so long as it was fulfilling his desire to put back into the sport some of the great pleasure he had received. Does this not seem to be an example of a spirit of which the League stands in some need, and a gentle suggestion to quite a few who have not thought on those lines before.

## NATIONAL JUNIOR TOURNAMENT AT BOOTLE Y.M.C.A.

**By W. STAMP.**

THE Liverpool League are organising the local play-off for the Eagle Girl national junior tournament for the under 15's. It will take place at Bootle Y.M.C.A. on Saturday, January 14, 1956, from 11 a.m. to 4 p.m.

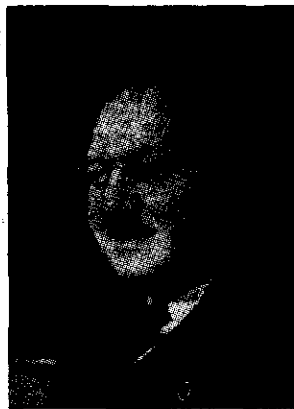
The total local entry is 72 (23 girls and 49 boys). There will be senior and junior singles events only and the four winners of the Nottingham tournament, due to be played the previous week, will travel to Liverpool to play off against our four to decide which will go forward to the finals in London on February 25. It is to be hoped that the interest created will lead to an increased entry next year, as it has done in other centres up and down the country.

Due to the fact that the English Open is being held in the North again this year, the Lancashire Open has been brought forward from March to January 28, 1956, and will again be held at the De Havilland works at Bolton, where there is accommodation for 14 tables with 15-foot runback and 8-foot side space.

There are Junior Singles for boys and girls (Ian Rogerson holds the boys' title), and the veterans of over 40 are again catered for, with our own Gus Read as the present holder.

Entry forms may be obtained from myself or from Mr. A. Howcroft, 30 Thorne Street, Farnworth, Nr. Bolton, and the closing date is January 21.

We had a coach last year, and should there be sufficient applications I will arrange for us to leave St. John's Lane at 9 a.m. as the tournament begins at 10 a.m. The return fare would not be more than 8/-, and reservations should be sent to me accompanied by a 5/- deposit.



The English Open will take place at Belle Vue, Manchester, commencing February 28, with the finals in the King's Hall on Friday, March 2. Entry forms will be available very shortly and can be obtained from Mr. N. Cook, 7 North Avenue, Stalybridge, Cheshire.

For the guidance of intending competitors, here are a few details:—

The Junior events will be played right through to but not including the finals, in the morning and afternoon sessions on February 28. The Men's Singles will commence at 6 p.m. and will include the foreign entry. The Women's Singles and Men's Doubles will be played on Wednesday morning and afternoon, with the Men's Singles continued in the evening, and on Thursday there will be the Mixed Doubles and continuation of the other events. There are three sessions daily: 9.30—12.30; 2.0—5.0 p.m.; and 6.0—10.0 p.m.

We had two coach parties and a few private car loads from Liverpool at the finals in the King's Hall in 1953, and I hope we can arrange something again this time because there will be a star-studded entry, with Miss Wertl from Austria, Harangozo from Yugoslavia, and entries from Czechoslovakia, Hungary, Sweden, France, Belgium and Germany. All the English stars will be there with the exception of Bergmann, who is in America.

The prices range from 3/6 to 9/6. Further details will be published in our January issue, but this preliminary announcement is to enable you to discuss the matter in your clubs with a view to making up a party to join us for an enjoyable evening of first-class table tennis.

## Revealing Figures

I HAVE in my possession some remarkable statistics of this division. They have been compiled by Bill Brown, our score card scrutineer in Glasgow, and consist of the records for the last seven years.

The most amazing thing is that the first dozen best averages in 1948 have changed little over the years and the first half dozen over these years have an average of over 80 per cent. It is an indication of the consistency of our regular players, the only youngsters in the list being J. Stoddart and D. Caldwell.

It is surprising to note that to-day Reg Hetherington, Norman Jones and Harold Willcock have lost only one set each in the league and that Bernard Hand is the only 100 per cent in the matches he has played.

Looking around at our promising youngsters, Rigby and Mulholland have over 50 per cent success playing at No. 1 and Rogerson and Stoddart just 50 per cent.

At the other end of the scale, one or two of our regulars are shown as having a difficult season. S. Wooding (Linnets), for instance, has one set out of 16; G. Gill (Balfour A) one out of 14; and M. Morison (Rafters A) one out of 12.

Now let me dwell on some league matches. In the Bohemians v Nomads game, won by the former 9-1, Christie was Nomads' sole winner, beating R. Kay. B. Crolley did well to take Hand to 13 in the third and Geoff Elliott had the same score with Ken Jones.

In Victoria Park's 6-4 defeat of Lucem, Tony Smith lost to Hobbs but Bill Jones beat Boden and Shepherd to give Park the margin. Oakhill's draw with Linnets was due to Townsend giving Bill Pierce his first defeat and to E. Wall beating fellow-sponger Thomas and Morris. Davis beat Read and Hamill for Linnets.

Rafters A notched their first win—6-4—against Balfour A, mainly due to Casselman's flashes of brilliance enabling him to beat Mulholland and Gill and Joe Lovelady also getting a pair v Eileen Mansell and Rooney.

The Linnets-Rafters match was a personal triumph for Pierce with wins

*Continued at foot of next column.*

## NO CRACK UP AT BOOTLE

WITH the promotion of Len Ross to Oakhill's first team, I have taken over writing these notes at short notice and without score cards, and so am unable to quote individual performances.

Although Bath Street took a point out of Bootle Y.M.C.A. the week before last, I feel sure that Bootle will win the championship and that Bath Street will be runners-up. I expect Bohemians A and Anfield A to be hanging on, hoping for either of the first pair to crack up, but with Bootle's strong string of reserves I don't think there will be any danger of their slipping.

A point that amazes me is that African Oil, holding up the division, managed to make a draw with Victoria Park (at the Oil Mills, of course) in the first round of the Readman Cup, and at that time the Park were lying fourth in the first division with eight points from six matches. This leads me to think — and, naturally, hope — that A.O.M. are in a false position and should before the end of the season climb to safety.

I appeal to all secretaries to help me by letting me have, by letter or telephone, any items of interest which I can put in my article, particularly cup results, with set winners, etc. A few seasons ago when I did the East Region notes I made the same appeal. The result was one letter over two seasons. If the same apathy exists in this division you shall have no cause to complain about the articles and I hope you will all enjoy reading "The Exploits of African Oil Mill."

To end on a controversial note. At almost all matches I have played in this season, someone has raised the issue—"Should sponge bats be banned?" Is this raised because they are concerned about the game as a spectacle or is it because they themselves have not been able to find the answer to sponge?

---

over brothers E.J. and R.M. But what a contrast was the Victoria Park-Linnets game, won by the former 8-2. Pierce came away empty handed, losing to Grayson and Smith.

## Surprises by Beauclair

AT the time of writing these notes only two weeks' full matches have been played since the last issue of the *Digest*. This, however, was enough to produce two surprise results, for which pride of place must go to Beauclair who brought them off.

Visiting Panto they were unlucky to draw after leading 5-3, but their major surprise came in the following week when they defeated Maghull 7-3.

Some very close sets were fought before the issue was decided. Three of Beauclair's wins were 21-19 in the third game. Nevertheless, it was a good win and enough to lift them from the third from bottom position, handing over to Waterloo Park.

The Waterloo club are having great difficulty in finding form. Their team order hardly reads alike one match after another, and as their defeats seem mainly to be 6-4 and most of their sets are won by their Nos. 3, 4 and 5, it is obvious they are having trouble at finding a winning No. 1 or No. 2.

Linnets, too, are a team to keep a wary eye on, having moved up one place. They have suffered several close defeats and may well surprise us all in the matches ahead, especially as they now have Brian Parady at No. 1 and Jim Green playing well. Points must surely follow even though the tail is weak. A signing I anticipate will no doubt strengthen them.

At the top of the table quite a struggle is going on, with only two points separating five teams. The Police are holding first place, despite the extra games played by Panto and Lofters, but the last few matches of the year should sort things out a bit and show where the overall strength lies.

But how good it is to see such keen competition in the division. It means that the majority of the teams must keep on their toes, either to win promotion to a higher sphere or to avoid dropping down to a lower one. And doesn't it add a great deal of interest to the season in general.

### Fourth Division

by Jim Green

## CADWA CONTINUE WINNING WAY

AS usual there is no outstanding shock to date. Results go very much as anticipated. Indeed, the matches always seem to go much as the book says; then I get complaints that my articles are dull. But that is your fault for giving me nothing to enthuse about.

A peculiar thing has come to my notice. The R.A.F.A.'s No. 2 by name of L. Small, has consistently beaten his opposing Nos. 1 but has lost to the Nos. 2. Odd, but true. However, as far as I can see he has only lost twice this season, so all is forgiven.

Cadwa A carry on winning and to date appear to have had little trouble. They are so far ahead of the remainder of the division that they beat Litherland A 9-1. I can see no serious opposition to their championship aspirations. At the same time Wavertree appear, even at this stage, to be doomed to the nether regions. The pressing question is who will accompany these two in their upwards and downwards movements.

On Monday, December 12, we had an inter-division match with the Fifth.

My old friend Joe Ellison, now the Fifth Division reporter, had the bright idea and I think it had something. What about our challenging a team from your division, Mr. Mason. I rather think we might be able to shake you a bit.

Jim Robinson, of the R.A.F.A., captained our team, at my special request, as I was not able to be present when the match began.

Let us hope we have no more foggy match nights. Among others it made quite a mess of the Everton Y.M. v L.P.A.S. A game, won by the home team by 9-1. It was very unfortunate as I do not think 9-1 quite represents the relative difference in the merits of the two teams.

Incidentally, why doesn't Peter Turtle play regularly for the Nomads? Surely he shows as much promise as other regular members and is worthy of selection. Then, if selected, he would remember how much he owes to the League. We can't afford to throw away any talent these days.

## A Slovenly Match

BY the time you read these notes an inter-divisional match will have been played at the Linnets club on December 12, between the Fourth division and our own. Jim Green readily accepted my challenge.

I want to make it quite clear that I am not an official of the league as some people seem to think. My only official job is to cover the matches in this division and to write these notes.

The match between Victoria Park C and Balfour C was approached in the most slovenly manner. The players gave one the impression that they cared not whether they won, lost or even whether they played the game at all. Why several of them found it necessary to knock-up until eight o'clock I cannot imagine.

I don't think there was a rally throughout the whole match and to be candid I was bored stiff. In fact, Charlie Manning and Charlie Moore admitted that the game was a flop and that I had wasted my time, but out of it Balfour scraped their first point of the season.

On the other hand, however, as I have trotted about the division I have discovered an attitude of discontent among a number of B team players. They argue that a lot of interest has vanished from the division because there is no promotion, whether they win the championship or not. I feel, therefore, that the Management Committee might give some consideration to a revision of the whole scheme, in view of the fact that it would be at least four years before any club could muster more than two teams in the first division.

The match between Bohemians B and Oakhill B was a very even game. Although Oakhill won there were several sets which might have gone to Bohemians with a little more steadiness.

The match was worth watching, but I would again appeal to umpires to make a decision and stick to it. In several matches I have seen umpires alter a decision upon the appeal of a player, especially where a "let" is concerned. It is the umpire's duty to control the game and not the concern of the player.

## SPLIT THUMB BUT WON

OUTSTANDING news of the month was the re-grouping of Norman Cooke to Bath Street A team. Norman has played in the first team continuously since the formation of the club in 1950 and made 138 successive appearances in cup and league matches.

His transfer to Bath Street A should make the side even stronger challengers to Liverpool Y.M.C.A. than they already are after their defeat of Fairlawn, but I still fancy the Y.M. side. Their combination of youth and experience should prove too strong for our much weakened division. This is a failing common to all the lower divisions, from three down, in my opinion.

Two teams I have seen surprise me at their lowly position in the table. The first is Rankin, who deserve special mention for their trek to East Lancashire Road in the fog.

Outstanding I thought was young Gibson. While not in the Nomads class, he is young and certainly has the right idea. Garton and Towndrow also deserve a mention.

Team No. 2 is Cadwa B—good players, nice styles with the exception of Golling who plays a half-volley game which is very effective. Walls plays a nice game and with practice will do well. Johnson, Dilworth and Walters all have the strokes, but they must remember that every stroke must not necessarily be a winner; also that a half-volley is just as much a stroke as a Barna flick. These last two points apply to quite a number in our division.

Johnson, incidentally won the vital game and the two points for his team, despite cracking his thumb on the corner of the table, breaking it open and then finding his bat in two pieces when it returned from the upper hemisphere.

I regret that I cannot comment on many games as a genius from the Management Committee (I hear it rumoured) has decided that you may get a better story if the score cards are kept secret from we correspondents. By coincidence, my cards for this month were lost in the post. All that arrived was an empty packet. If rumour is correct and in future I do not receive the cards through intent, these will be my last notes.

# LEAGUE TABLES

up to and including 10th December, 1955

## First Division

|                | P. | W. | L. | D. | F. | A. | P. |
|----------------|----|----|----|----|----|----|----|
| Balfour        | 9  | 8  | 0  | 1  | 75 | 15 | 17 |
| Bohemians      | 10 | 7  | 1  | 2  | 67 | 33 | 16 |
| Victoria Park  | 10 | 6  | 1  | 3  | 61 | 39 | 15 |
| Rafters        | 8  | 6  | 1  | 1  | 55 | 25 | 13 |
| Anfield        | 10 | 3  | 2  | 5  | 53 | 47 | 11 |
| Liverpool Y.M. | 9  | 3  | 3  | 3  | 44 | 46 | 9  |
| Linnets        | 9  | 3  | 4  | 2  | 43 | 47 | 8  |
| Oakhill        | 9  | 2  | 4  | 3  | 38 | 52 | 7  |
| Balfour A      | 9  | 1  | 5  | 3  | 34 | 56 | 5  |
| Nomads         | 9  | 2  | 7  | 0  | 27 | 63 | 4  |
| Rafters A      | 7  | 1  | 6  | 0  | 19 | 51 | 2  |
| Lucern         | 9  | 0  | 8  | 1  | 24 | 66 | 1  |

## Fifth Division

|                  | P. | W. | L. | D. | F. | A. | P. |
|------------------|----|----|----|----|----|----|----|
| Dunlop           | 10 | 9  | 1  | 0  | 63 | 37 | 18 |
| Balfour A        | 10 | 8  | 1  | 1  | 65 | 35 | 17 |
| Victoria Park B  | 9  | 6  | 1  | 2  | 55 | 35 | 14 |
| Oakhill B        | 9  | 5  | 2  | 2  | 54 | 36 | 12 |
| Rafters B        | 9  | 4  | 2  | 3  | 52 | 38 | 11 |
| Bohemians B      | 10 | 5  | 4  | 1  | 53 | 47 | 11 |
| Bootle Y.M. B... | 8  | 4  | 2  | 2  | 45 | 36 | 10 |
| Victoria Park C  | 10 | 2  | 5  | 3  | 42 | 58 | 7  |
| Anfield B        | 9  | 1  | 5  | 3  | 38 | 52 | 5  |
| Warbreck Moor    | 10 | 2  | 7  | 1  | 40 | 60 | 5  |
| W'rloo Park A    | 10 | 1  | 8  | 1  | 39 | 61 | 3  |
| Balfour C        | 10 | 0  | 9  | 1  | 24 | 76 | 1  |

## Second Division

|                 | P. | W. | L. | D. | F. | A. | P. |
|-----------------|----|----|----|----|----|----|----|
| Bootle Y.M.     | 9  | 7  | 0  | 2  | 63 | 27 | 16 |
| Bath Street     | 10 | 6  | 1  | 3  | 69 | 31 | 15 |
| Litherland      | 9  | 6  | 3  | 0  | 50 | 40 | 12 |
| Anfield A       | 10 | 5  | 3  | 2  | 53 | 47 | 12 |
| Bohemians A     | 10 | 5  | 1  | 4  | 53 | 47 | 12 |
| Victoria Park A | 10 | 3  | 3  | 4  | 49 | 51 | 10 |
| Cadwa           | 10 | 3  | 4  | 3  | 45 | 55 | 9  |
| L'pool Y.M. A   | 10 | 3  | 4  | 3  | 44 | 56 | 9  |
| Bootle Y.M. A   | 9  | 1  | 3  | 5  | 40 | 50 | 7  |
| Oakhill A       | 9  | 2  | 6  | 1  | 36 | 54 | 5  |
| Waterloo Dock   | 9  | 1  | 6  | 2  | 32 | 58 | 4  |
| African Oil     | 9  | 1  | 7  | 1  | 36 | 54 | 3  |

## Sixth Division

|                 | P. | W. | L. | D. | F. | A. | P. |
|-----------------|----|----|----|----|----|----|----|
| L'pool Y.M. B   | 9  | 9  | 0  | 0  | 79 | 11 | 18 |
| Bath Street A   | 9  | 7  | 2  | 0  | 62 | 28 | 14 |
| Oakhill C       | 8  | 6  | 1  | 1  | 54 | 26 | 13 |
| Fairlawn        | 9  | 5  | 3  | 1  | 52 | 38 | 11 |
| Domestic Mis.   | 9  | 3  | 3  | 3  | 43 | 47 | 9  |
| Anfield C       | 9  | 4  | 4  | 1  | 37 | 53 | 9  |
| Eng. Electric A | 8  | 3  | 4  | 1  | 35 | 45 | 7  |
| Cadwa A         | 7  | 1  | 4  | 2  | 27 | 43 | 4  |
| Rankin          | 7  | 1  | 5  | 1  | 28 | 42 | 3  |
| Lofters A       | 8  | 1  | 6  | 1  | 25 | 55 | 3  |
| Linnets B       | 9  | 0  | 8  | 1  | 18 | 72 | 1  |

## Third Division

|                  | P. | W. | L. | D. | F. | A. | P. |
|------------------|----|----|----|----|----|----|----|
| Panto            | 10 | 6  | 1  | 3  | 64 | 36 | 15 |
| Lofters          | 10 | 6  | 2  | 2  | 56 | 44 | 14 |
| I.C.I.           | 9  | 5  | 1  | 3  | 53 | 37 | 13 |
| L.P.A.S.         | 9  | 6  | 2  | 1  | 51 | 39 | 13 |
| Maghull          | 9  | 6  | 3  | 0  | 51 | 39 | 12 |
| English Electric | 10 | 4  | 3  | 3  | 55 | 45 | 11 |
| Osterley         | 9  | 4  | 3  | 2  | 44 | 46 | 10 |
| Waterloo Park    | 9  | 3  | 4  | 2  | 45 | 45 | 8  |
| Linacre          | 9  | 2  | 4  | 3  | 39 | 51 | 7  |
| Beauclair        | 9  | 2  | 6  | 1  | 40 | 50 | 5  |
| Wavertree        | 9  | 0  | 7  | 2  | 30 | 60 | 2  |
| Linnets A        | 10 | 0  | 8  | 2  | 32 | 68 | 2  |

## Women's Division

|               | P. | W. | L. | D. | F. | A. | P. |
|---------------|----|----|----|----|----|----|----|
| Bohemians     | 10 | 8  | 0  | 2  | 72 | 28 | 18 |
| Anfield       | 8  | 6  | 0  | 2  | 59 | 21 | 14 |
| Rafters       | 9  | 5  | 1  | 3  | 61 | 29 | 12 |
| Balfour       | 8  | 6  | 2  | 0  | 54 | 26 | 12 |
| Waterloo Park | 9  | 5  | 3  | 1  | 51 | 39 | 11 |
| Oakhill       | 9  | 5  | 3  | 1  | 47 | 43 | 11 |
| Bibbys        | 9  | 4  | 5  | 0  | 41 | 49 | 8  |
| Littlewoods   | 8  | 3  | 5  | 0  | 33 | 47 | 6  |
| Osterley      | 8  | 2  | 5  | 1  | 35 | 45 | 5  |
| Aigburth      | 10 | 2  | 8  | 0  | 31 | 69 | 4  |
| Cadwa         | 8  | 0  | 6  | 2  | 24 | 56 | 2  |
| Linnets       | 8  | 0  | 8  | 0  | 12 | 68 | 0  |

## Fourth Division

|                | P. | W. | L. | D. | F. | A. | P. |
|----------------|----|----|----|----|----|----|----|
| Cadwa          | 9  | 9  | 0  | 0  | 70 | 20 | 18 |
| Litherland A   | 8  | 6  | 1  | 1  | 52 | 28 | 13 |
| R.A.F.A.       | 8  | 5  | 2  | 1  | 47 | 33 | 11 |
| Aigburth       | 7  | 4  | 1  | 2  | 42 | 28 | 10 |
| Everton Y.M.   | 8  | 4  | 3  | 1  | 43 | 37 | 9  |
| Brenka         | 9  | 3  | 3  | 3  | 49 | 41 | 9  |
| Panto A        | 9  | 3  | 3  | 3  | 48 | 42 | 9  |
| African Oil A  | 8  | 2  | 5  | 1  | 32 | 48 | 5  |
| Tech. Students | 8  | 2  | 6  | 0  | 34 | 46 | 4  |
| L.P.A.S. A     | 8  | 1  | 5  | 2  | 31 | 49 | 4  |
| Wavertree A    | 10 | 0  | 10 | 0  | 12 | 88 | 0  |

## North Region

|               | P. | W. | L. | D. | F. | A. | P. |
|---------------|----|----|----|----|----|----|----|
| W'rloo Park A | 9  | 7  | 1  | 1  | 65 | 25 | 14 |
| Brenka A      | 9  | 6  | 2  | 1  | 55 | 35 | 13 |
| Bath Street A | 10 | 5  | 2  | 3  | 59 | 41 | 13 |
| Litherland B  | 7  | 5  | 0  | 2  | 50 | 20 | 12 |
| Co-op         | 10 | 5  | 3  | 2  | 57 | 43 | 12 |
| Litherland C  | 9  | 5  | 4  | 0  | 56 | 34 | 10 |
| Bootle Y.M. C | 7  | 5  | 2  | 0  | 39 | 31 | 10 |
| Maghull A     | 9  | 3  | 5  | 1  | 43 | 47 | 7  |
| Orrell        | 8  | 1  | 6  | 1  | 25 | 55 | 3  |
| R.Aux.A.F.    | 7  | 1  | 5  | 1  | 19 | 51 | 3  |
| Co-op A       | 8  | 1  | 7  | 0  | 17 | 63 | 2  |
| Douglas Y.C.  | 8  | 0  | 7  | 1  | 15 | 65 | 1  |

## LEAGUE TABLES

### South Region

|                   | P. | W. | L. | D. | F. | A. | P. |
|-------------------|----|----|----|----|----|----|----|
| Harold House ...  | 9  | 8  | 0  | 1  | 63 | 27 | 17 |
| Rafters C .....   | 9  | 6  | 0  | 3  | 61 | 29 | 15 |
| Bedford.....      | 10 | 5  | 2  | 3  | 59 | 41 | 13 |
| Lucem A .....     | 9  | 5  | 2  | 2  | 56 | 34 | 12 |
| Sefton General    | 9  | 6  | 3  | 0  | 56 | 34 | 12 |
| Florence Oxtou    | 9  | 5  | 4  | 0  | 46 | 44 | 10 |
| Dunlop A .....    | 10 | 4  | 5  | 1  | 49 | 51 | 9  |
| L'pool Y.M. C     | 9  | 3  | 5  | 1  | 41 | 49 | 7  |
| Lussac .....      | 9  | 2  | 5  | 2  | 40 | 50 | 6  |
| W'tree Labour     | 9  | 2  | 6  | 1  | 34 | 56 | 5  |
| Aigburth A ...    | 9  | 1  | 6  | 2  | 33 | 57 | 4  |
| African Oil B ... | 9  | 0  | 9  | 0  | 12 | 78 | 0  |

### Central Region

|                   | P. | W. | L. | D. | F. | A. | P. |
|-------------------|----|----|----|----|----|----|----|
| G.L.S.C. ....     | 9  | 9  | 0  | 0  | 75 | 15 | 18 |
| Rankin A .....    | 9  | 6  | 1  | 2  | 56 | 34 | 14 |
| Cadwa C .....     | 8  | 4  | 1  | 3  | 50 | 30 | 11 |
| Leyfield .....    | 9  | 5  | 3  | 1  | 51 | 39 | 11 |
| Bohemians C ...   | 10 | 3  | 2  | 5  | 53 | 47 | 11 |
| Ebani .....       | 10 | 4  | 4  | 3  | 59 | 51 | 10 |
| Lofters B .....   | 8  | 4  | 3  | 1  | 44 | 36 | 9  |
| L.P.A.S. B .....  | 9  | 4  | 5  | 0  | 44 | 46 | 8  |
| Osterley A .....  | 9  | 2  | 5  | 2  | 34 | 56 | 6  |
| R.A.F. Mov. ...   | 8  | 2  | 4  | 2  | 35 | 45 | 4  |
| Tech. Stud. A ... | 9  | 1  | 8  | 0  | 27 | 63 | 2  |
| Anfield D .....   | 10 | 1  | 9  | 0  | 22 | 78 | 2  |

(EDITORS' NOTE:—We offer our sincere apologies to Aigburth women's team for omitting them from the league table last month.)

---

### NOTICE TO SUBSCRIBERS

Deadline for copy for the January issue of the Digest is Monday, January 9

## MANAGEMENT NOTES

The following are the cup draws:—

### READMAN CUP

#### Third Round

Rafters/Balfour A v Oakhill A  
Litherland/Rafters B v Anfield/Oakhill  
Liverpool Y.M.C.A. v Linnets  
Balfour v Bath Street

### RUMJAHN CUP

#### Third Round

Panto v Victoria Park B/Lofters  
Osterley v Waterloo Park/Liverpool Y.M.C.A. B  
I.C.I./Dunlop v L.P.A.S.  
L.P.A.S. A/Waterloo Park A v Balfour B

### HYDE CUP

#### Third Round

Lucem A/Harold House v G.L.S.C./Florence Oxtou  
Litherland B/Dunlop A v Rankin A  
Leyfield v Co-op  
Rafters C/Bath Street B v Liverpool Y.M.C.A. C

### BARTHOLOMEW CUP

#### Semi-final

Linnets/Waterloo Park v Anfield  
Bohemians v Rafters



# ALL HAD ANSWER TO SPONGE

By JIM GREEN

THE other evening, in search of a little table tennis to while away some spare time, I ambled gently into the club. The first thing to meet my eye was our tame inventor, pale, earnest, and owlishly bespectacled, wielding a something in place of his bat.

Attached firmly to an orthodox handle was a simple light metal hoop about seven inches in diameter, and stretched loosely in a lattice work from this hoop, was what appeared to be narrow elastic.

Needless to say, my curiosity overcame my inherent politeness, and when I demanded of him "What the — is that thing," our earnest Ernest replied gravely, gazing at me over his glasses: "This is the very latest scientific approach to the art of bat-making.

The underlying principle is the fundamental characteristic of the common catapult. The spheroid, when struck with ferocity by an opponent, impinges rapidly upon the elastic, the resultant tension of which hurries it back to the court of my opponent with such increased velocity as to make his return a practical impossibility.

Since it is only necessary to gently incline the face of this device toward that portion of the table to which the ball is required to speed, and since this is at times of the utmost difficulty, I am now applying my talents to the development of the hydro-electric-supersonic, radar-controlled-director, which when strapped to the wrist will—I hope—motivate the face towards that spot where it will do the most good."

Babbling a little, and sweating gently, I moved away from the contented moron, only to find myself gravely inspecting one of our club rabbits, happily bashing away with what appeared to be one of the old original vellum-covered ping-pong efforts. Diffidently I inquired: "What the blazes have got there, you Geek?"

This is an adaptation of an idea even older than sponge, old man," he replied. "You see the little lever on the handle by the thumb? Well, by manipu-

lating that you can either tighten or relax the tension of the vellum old man. Even Bergmann would be a trifle disconcerted if my first eight or nine returns played the well-known passage from Colonel Bogey. Music while you play, old man," he added with his most inane grin.

Now sweating profusely, and sticking an odd straw or two into my hair, I staggered onwards towards another slap-happy look wielding a four-foot long butterfly net, attempting to catch the ball. Occasionally he extended his arm straight out behind him, moved it overhand as does Frank Tyson, and smashed the olley down on his opponents' base-line with incredible ferocity.

Glancing sideways at me he murmured dreamily:—"Without ever having to move my feet, too. I only wish I could catch the damned thing more than once out of 29, but practice will tell."

"Death, where is thy sting," I murmured, sitting down heavily on a chair containing several sheets of paper.

"Get up!"

"No."

"GET UP ! "

"Why?"

"Your sitting on the plans for my self-regulated jet-propelled shoes for scooting backwards and getting all those balls that have already gone past me."

Vaguely delirious I shot out of the clubroom, and it was only as I dashed away that I realised that I had not yet shown all those clots who were wasting their time with such stupid devices, my recent patented push-button-controlled telescopic bat handle. Never mind, I thought, I'll show them to-morrow, when . . .

"Jim, Jim, come on, time to get up."

The scene had faded and I came back to reality with a bump. So it was only a dream, but, I have since wondered, did I possibly get a glimpse of the future shape of things?

## RAFTERS PROVED A WORRY

IN my last article I said that Rafters would undoubtedly worry some of us before long. Oh, how true that has turned out to be.

In recent weeks they have taken a point from both Anfield and Bohemians. Their match against Anfield was truly exciting. Rafters were 2-0 down and then 5-3 down and certainly deserved the point they took away for their determined fight.

A lot of the credit goes, I think, to Kay Rumjahn, who won both her sets, beating Pauline Lawrenson and yours truly. Joan Brennand also played extremely well to beat Ita Howley in the last vital set of the night and so give Rafters their draw.

Against Bohemians, Rafters were without the services of Joan, and Elizabeth Loughrey filled the gap. Kay Rumjahn once again won her two sets, but against Barbara Tomkinson the scores of 21-17, 24-22 suggest that she had quite a struggle to do so.

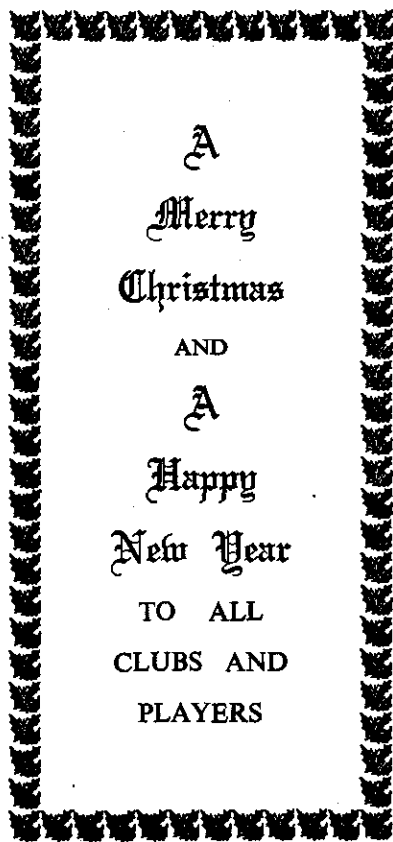
There has been a real three-cornered battle going on between the three teams I have mentioned as the Bohemians and Anfield match also ended in a draw. In this match Bohemians' usual No. 1, Moya Jones, played down at No. 3. Tactics, I suppose, but it surprises me to find the only inter-city player in the team playing other than at No. 1.

Oakhill are a team that I thought might go far. I was surprised therefore to hear that Cadwa had held them to a draw. Does this mean that Cadwa are now fighting their way slowly from among the lower teams and that they have settled down to what, in other years, has been our first division?

How soon we seem to have arrived at the semi-finals of the Bartholomew Cup this season. But then with only twelve teams entered the preliminary rounds to the final are soon played and, at the most, this year's cup winners will only have played four rounds. One

wonders if it is worth having a cup for such a small number of teams.

In view of the drawn league game between them, the tie between Bohemians and Rafters should be the most interesting of the two semi-finals.



## Strength at The Bottom

I WENT along to see the Harold House v Bedford match and must first take them to task for not getting started before 8.10. I understand it was Bedford who arrived late. One of their players came at 8.45 and when called upon to play held the game up while he got changed.

It was obviously a needle match from the start, but I congratulate both teams on the friendly spirit in which it was played. Harold House won 6-4 but I think it should have been a draw. E. Radcliffe gave Bedford a good chance of saving a point by beating B. Jacobs in the ninth set, making it 4-5. W. Feely then played A. Isaacson and lost after taking the first game. Had he continued his slow attacking game instead of mixing it, I'm sure he would have won.

The victory meant Harold House were still undefeated and on that showing I can't see any team beating them. I attribute their success to the fact that, unlike most teams, they are strong in the lower positions.

The biggest surprise of the month was the Dunlop A victory of 8-2 over Sefton General, due, in the main, to the strengthening of their team by F. Payne and Mrs. Payne. I was delighted to see these two old colleagues from Cheshire Lines, along with Allan Pratt of Aigburth. It makes four of us at least still in the game. Perhaps I'll meet some more before the season is over.

George Linsner, of Florence Oxton, is a young player showing great promise and has had a try-out with the Nomads. Good luck, George! Another player showing good form is 15-year-old R. Rattigan, of Lussac, and if he settles himself down a little and listens to the advice of his captain, I am sure he too, will soon be playing for the Nomads.

A word about the "let" service rule. Players *must* play the ball even if it does touch the net, until told by the umpire to let. A player who stops play himself must lose the point. Also remember the ball must be thrown up from the palm of the hand, not held in the fingers. Players are getting away with far too much.

## LOCAL DERBY SURPRISES

NOW that the season is well under way, it is possible to assess the strength of the various teams. Waterloo Park B and Litherland B appear to be the strongest teams and the match between them on Park's table resulted in a draw after many close games.

Bath Street B, however, caused a surprise when they were entertained by Waterloo Park in a local Derby match. They went very close to being the first team to beat the region leaders, but after leading 5-2 had to be content with one point. Mrs. J. Newell and A. Reid were outstanding for the visitors, each winning two sets. T. Reynard contributed two wins for Waterloo to bring his record in league matches to 15 wins in 16 sets. This is second only to Reid, who has been 100 per cent successful, having won all of the 10 sets he has played. How near Waterloo Park were to defeat, can be seen by the fact that D. Chapman only beat F. Plumbley 22-20 in the third game, and P. Paton defeated a hard-working Cunningham 21-18 in the third.

Turning to the other end of the league, Orrell Wardens having gained their first point by holding Co-op to a draw, were in fine fettle for their home match with Co-op A and although only leading 4-3 at one stage, did not concede another set. Both teams are inexperienced but if they can overcome their nerves should win more matches.

Brenka A are occupying a comfortable place in the table, although they seem to be having difficulty in turning out the same side each week, nine players having been called on to date.

Co-op have been disappointing this season. They finished in third place last season, but with almost the same team have so far dropped more points than expected, considering that the standard of play in the region is not as high as last season. Co-op's No. 1, R. Crank, is playing well, having won 14 out of 16 sets.

# Rankin Boy's Bright Promise

I HAVE in previous seasons complained of the lack of young players in our region. This season, however, we are more fortunate, especially with the inclusion of Rankin A in our ranks.

They had drawn with Cadwa and the G.L.S.C. and Cadwa match had proved so keen, that I went along to see the G.L.S.C. and Rankin clash so as to be able to make a comparison.

Frankly, I was a little disappointed with the result—8-2 for G.L.S.C.—but was very impressed with the Rankin boys' play, especially with that of their youngest member, W. Newton. He promises a bright future when he gains some experience.

The fact that they were playing the region leaders seemed to make the Rankin players a trifle nervous.

The match opened quietly with the respective No. 1, Faneran proving too steady for a somewhat nervous McGowan, and then Grant (No. 2) spun Card (No. 3) out of the game despite an inability to get his rather unorthodox drive on.

Matters livened up when Howgate (No. 3) lost to Bellion (No. 2) 25-27, 21-13, 17-21, the latter proving that a game is not lost until it is won. Almond (No. 4) had a comfortable win against a rather wild-hitting Sullivan (No. 5), and the first half of the match closed

with Barrington (No. 5) losing the second three-game set to Newton (No. 4), who showed some nice attacking strokes on both wings.

So G.L.S.C. led 3-2 and there were still prospects of a close match, but when Grant's sponge spin gained him a comfortable win over Grant and Faneran's steadiness was too much for Bellion, who contributed to the defeat by an inability to return a chop to his backhand, a distinct change came over the match.

Nevertheless the set of the night was still to come — when paratrooper Howgate, 6 ft. 1 in. and 14 stone, beat 16-year-old Newton in a match of excellent attacking play and some quite good defensive work. The score was 21-17, 19-21, 21-13, but on the night's play Newton deserves higher rating and he would still go on contributing to his side's success.

With the match decided the last two sets were something of an anti-climax, and Almond and Barrington ran out comfortable winners against the despairing Gard and Sullivan. But it had been an enjoyable evening, with experience proving the master.

Having drawn five of their first eight matches, it would appear as if Bohemians are out to set up a new record for the highest number of draws in a season.

We supply:—

BUKTA Table Tennis Shirts in all colours.  
Johnny Leach, Barna, Bergmann etc. T.T. Bats.  
A variety of Sponge Rubber Bats, Tables,  
Nets and Posts . . . . . in fact  
**EVERYTHING FOR TABLE TENNIS**

## HENRY WHITTY & SON LTD.

15 BASNETT ST., LIVERPOOL 1

Telephone . . . . . ROYal 3011

## An Example to Our Youth

WHILE we rejoice in the promotion Mr. Don Foulis has had in his business career, we regret that it necessitates his leaving Liverpool and severing his connection with our League, which, with the exception of the war years, has lasted since 1927 when he joined with the Thingwall Club, of which he was the secretary.

In the days when coaching schemes were unknown and the only way to success was by practice and still more practice, Don gained all the honours the game could offer. He received his first international honours against Wales in 1929 and again in 1930. He played against Ireland in four successive years, 1930-1933, when he was chosen to play in the Swaythling Cup team in Paris.

He won many open tournaments in the Midlands and the North, and in 1931, in partnership with H. C. Cooke, of Manchester, won the English Open Doubles title.

He was supreme in Liverpool for many years and in the six years from 1928 to 1933 was Closed champion five times, four of them in succession. He also held the doubles title with Tom Rotheram three times and once with G. H. Readman.

Although he played with Thingwall in the early years, his name has been mainly associated with Lucem, with whom he played until he left the district.

Don also played his part in an administrative capacity and was on the Management and Selection Committee in 1930, 1931, and again in 1945, 1946. He succeeded Mr. T. G. Brandreth as chairman in 1947 and remained in that office until 1954.

The name of Foulis will remain in the records for all to see, and we are glad to have had such a long association with someone who has adorned the game locally and nationally and was a model sportsman on and off the table. I notice in the dictionary that among the definitions of "model" are the words: "Example for imitation." I commend this to our younger players.—W.S.

## LESSON HERE FOR CAPTAINS

THOUGH the League rules cover a great number of contingencies, the events at a recent League match found them unable to offer any guidance when a truly strange crisis arose.

Briefly the events preceding the crisis were as follows. The visiting captain handed a copy of his team order to the home skipper but never saw the card until after six sets had been played. In the intervening time he called on his own players in a different order to which he had nominated.

It appears to be an incredible sequence of events, but as I was the visiting captain concerned, with no excuse at all for my action, it can be taken that the events were as described.

The result was that instead of a comfortable 5-1 lead at supper, two of our victories were illegal—or were they? There was nothing in the rules to cover the point, and the question arose as to the correct action.

Opinion was more or less equally divided, but my own view and that of the home captain, was that the two sets should be replayed and this was accordingly done, though this meant that several players were put to no little convenience by being kept very late.

Against that view, however, there is the fact that it was a genuine mistake, the time factor certainly was important, and on the surface no advantage had been gained one way or the other, and there were quite a few who thought on these lines.

It would have been even more interesting if three or even four sets had been open to suspicion and the possibility of replaying consequently ruled out altogether. The legality of the sets would have had to have been definitely decided one way or the other. The only alternative obviously is for a replay, unless the home side are to be awarded walk-overs in the sets open to suspicion.

At all events this seemed to me to be a unique event and worth recording as a warning to captains who don't keep an eye on the card! Now then, Mr. Cameron, what are your views?—J.D.L.

# NOW THE VEIL IS LIFTED

By E. CAMERON

MY introduction to the Management Committee was rather awe-inspiring. Off to a bad start; I was late entering the meeting held in surroundings that would have done credit to many a business firm.

I was directed to a chair high up in a place of honour. Opposite sat a shorthand-typist; on my left was the vice-chairman and facing him the Great Dictator himself, Secretary Bill Stamp; with, of course, Chairman Jack Hughes in his seat of office.

This impressive set-up, I was told, was usual. I would always occupy the same chair. Strangely enough, we have not held a meeting in that room since; nor, in fact, in any one room on two consecutive occasions.

What kind of thoughts did I have on my way to the meeting? I had come slowly through the phases of "disinterested in anything but playing," "cocking an ear for league scandal, and possibly even starting some" to "criticising the management." Now I was in the active management.

I tried to size up my fellow managers. I knew many of them by hearsay reputation. One I have mentioned; others were supposed to be loud-mouthed and empty headed; some quiet and sleepy thinking and some just empty-headed. True, I had heard the odd word of praise now and again.

Summed up, however, the Management Committee are a body of folk willing if not able, to manage the league's affairs. I was now in that happy position myself.

The agenda was well loaded—they always are—and I listened disinterested to a complaint of poaching players which could not be proved. Soon,

however, I was in the thick of it; discussions strong and fierce and decisions being reluctantly forced through.

What a pity you were not there. Club secretaries must often wonder how to vote for candidates for the Management. How do they do it? Some, of course, quite rightly vote against those beating them in matches; good Liverpudlians vote against Evertonians; others vote in numbers in accordance with their pools plan; very few vote for the best managers. How can they? How can anyone know how good his elected members turn out to be, or how bad?

Have you ever thought how silly it is. Not long ago I asked a member of the Committee for information about a matter discussed at a Management meeting, only to be told that all discussions are secret—no one must know what happens at these meetings. Silly it may be, but obviously many things said at committee meetings must be suppressed—their is no privilege as in the House of Commons.

I have been trying to evolve a compromise of how to let you know how the managers manage, but without success. I can, however, set your mind at rest on a few points.

For instance, all the items on the agenda are discussed and given a fair hearing. Discussions are strong, even heated at times; decisions are often reached by the chairman's casting vote. And if you think about that you will realise that your Great Dictator is just one of many; not the biggest nor the loudest. In fact, the poor man is shouted down just as often as I am, and knowing the silly things I am likely to say, you will realise that that is fairly often.

---

## ***The Sports Specialist***

TABLE TENNIS EQUIPMENT A SPECIALITY  
Championship Tables, Bats, Balls, Nets, Shoes and Clothing.  
All makes of named Bats and Tables supplied.

# **JACK SHARP**

Telephone:

LIMITED

ROYAL 4793/4

VISIT OUR SHOWROOMS . . .

**36-38 Whitechapel : LIVERPOOL 1**

## Big Drums Were Silent

AS far as the Liverpool teams have been concerned the season's opening has been quiet. No big drums have sounded to mark our re-entry in the Lancashire and Cheshire League.

The policy so far as the men's team is concerned, is to concentrate on the youth of the league, and Rigby, Rogerson, Mulholland, Truman and Cairns have been blooded in the early matches.

A useful 6-4 win was scored over a strong Wigan side—our opponents scored a 10-0 victory in their other match to date—but we bit the dust by 8-2 at St. Helens Y.M.C.A. A. C. Taylor, originally selected for the match, was unable to play through illness and the chosen reserve proved unobtainable at short notice. It was therefore a weakened Liverpool team which took its medicine, but the match was memorable for the establishment of Mike Truman as a player of rare standard, for he won both our sets and only a two-point reversal in the third game prevents him from snatching a third.

The women had not opened their league account when I wrote these notes, for their first match, v Glossop, was cancelled owing to the latter's withdrawal from competitive play.

On the knock-out front, however, they have succeeded in making their presence felt by steepling successfully over two hurdles in the Rose Bowl competition.

In the first round Eileen Mansell, Bluey Casselman and Beryl Waterson defeated Blackpool to the tune of 6-3, Eileen in particular being too strong for the opposition. In round two, Burnley were met and beaten on their own table—in the northern 'home of table tennis,' Ken Stanley's academy—by 5-1 in a game left unfinished owing to the time and distance factors. The same players did duty for Liverpool and this time the match was won more genuinely by all-round team strength than had been the case against Blackpool.

The men's fixtures in the Willmott Cup showed a high degree of variation. In the first round the Potteries were visited and defeated in no uncertain manner—6-1—by Les Davies, Ted and Ron Rumjahn.

The second round saw us faced with the hurdle which usually confronts Liverpool teams at about this stage in national competitions—a visit to Manchester. There international Ron Alcock, junior international Geoff Pullar and Cheshire county star Arnold Shepherd confronted our trio (Reg Hetherington had replaced Ron Rumjahn in the Liverpool side). Class told, and Manchester took the first five sets in straight games to eventually win 8-1, Ted Rumjahn scoring our only success.

Matches outstanding as we go to press, include the women's fixture with Stockport and the men's match with Southport A, due to be played at Bootle Y.M.C.A. on December 16. In the zone final of the Rose Bowl our women will visit the winners of the Manchester-Barrow tie.

Here is the league table for Division 3B of the men's section of the league :

|                    | P. | W. | L. | D. | F. | A. | P. |
|--------------------|----|----|----|----|----|----|----|
| St. Helens .....   | 2  | 2  | 0  | 0  | 16 | 4  | 4  |
| Ellesmere Port ... | 2  | 1  | 0  | 1  | 13 | 7  | 3  |
| Mid-Cheshire ...   | 2  | 1  | 0  | 1  | 11 | 9  | 3  |
| Wigan .....        | 2  | 1  | 1  | 0  | 14 | 6  | 2  |
| Liverpool .....    | 2  | 1  | 1  | 0  | 8  | 12 | 2  |
| Widnes .....       | 2  | 1  | 1  | 0  | 8  | 12 | 2  |
| Warrington .....   | 2  | 0  | 2  | 0  | 8  | 12 | 0  |
| Southport A .....  | 2  | 0  | 2  | 0  | 2  | 18 | 0  |